

WAAS CH 56406 W14A	APP CRS 142°	Rwy Idg TDZE Apt Elev	4903 19 20
--	------------------------	-----------------------------	---------------------------------------

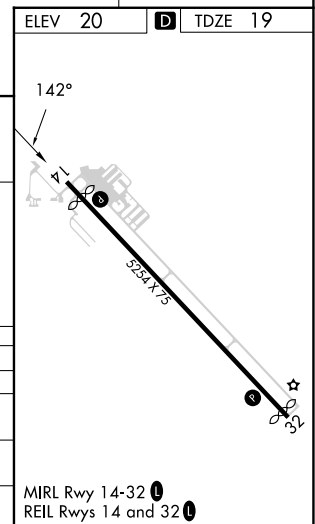
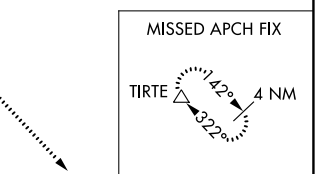
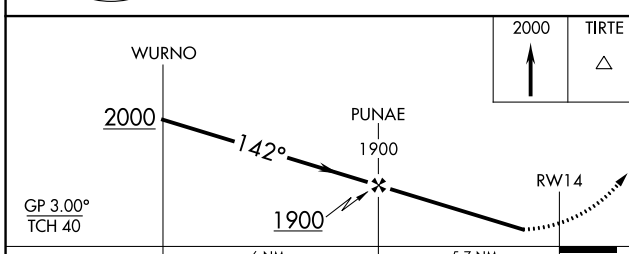
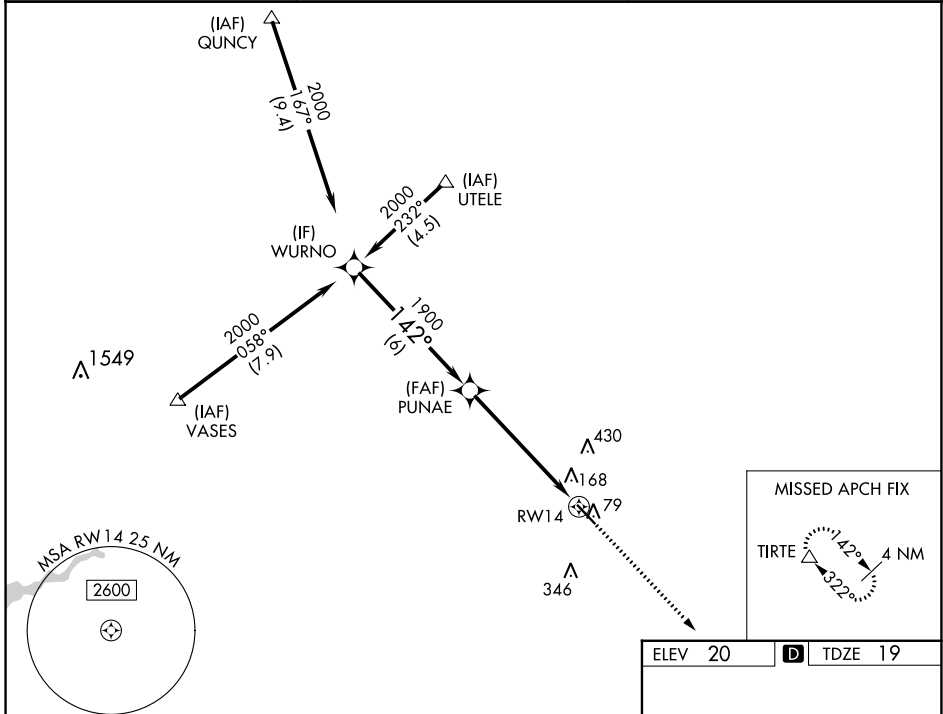
RNAV (GPS) RWY 14

LA BELLE MUNI (X14)

NA Baro-VNAV NA. DME/DME RNP-0.3 NA. Helicopter visibility reduction below 1 SM NA. Use Southwest Florida Intl altimeter setting; when not received use Page Fld altimeter setting and increase all DA 8 feet, all MDA 20 feet and LNAV Cat D visibility ¼ mile.

MISSED APPROACH: Climb to 2000 direct TIRTE and hold.

RSW ASOS 124.65	FORT MYERS APP CON 126.8	UNICOM 122.8 (CTAF) 0
---------------------------	------------------------------------	---------------------------------



GP 3.00° TCH 40	WURNO		PUNAE		RWY 14	
	2000		1900		1900	
	6 NM		5.7 NM			
CATEGORY	A	B	C	D		
LPV DA	388-1¼		369 (400-1¼)			
LNAV/VNAV DA	565-2		546 (600-2)			
LNAV MDA	520-1	501 (500-1)	520-1½	501 (500-1½)		
CIRCLING	580-1	560 (600-1)	800-2¼ 780 (800-2¼)	800-2½ 780 (800-2½)		

SE-3, 31 OCT 2024 to 28 NOV 2024

SE-3, 31 OCT 2024 to 28 NOV 2024