

APP CRS	Rwy Idg	4800
344°	TDZE	2724
	Apt Elev	2724

RNAV (GPS) RWY 34

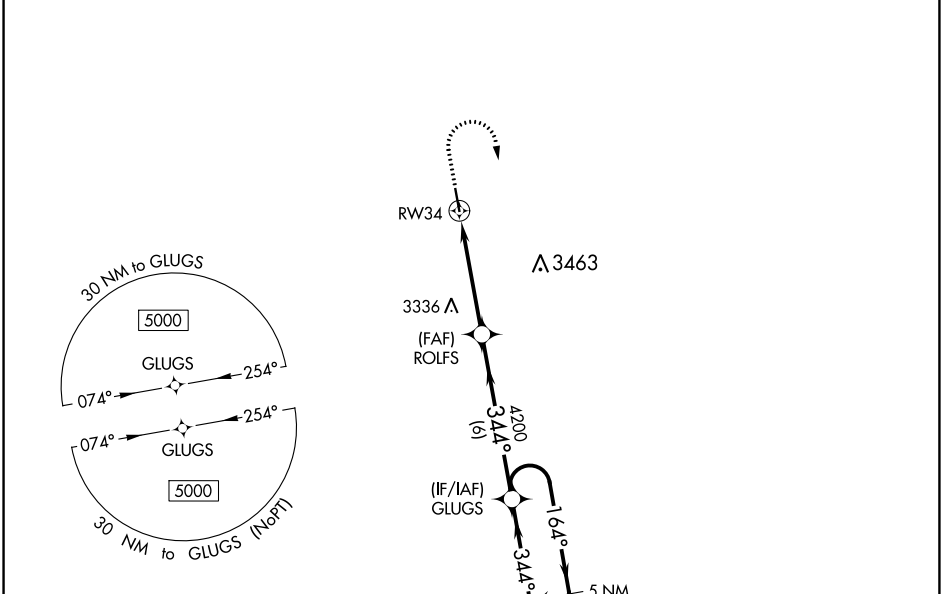
ROSEBUD SIOUX TRIBAL (STU)

RNP APCH - GPS.

⚠ NA Rwy 34 helicopter visibility reduction below 1 SM NA. Use Valentine altimeter setting, when not received, use Martin altimeter setting and increase all MDAs 100 feet and LNAV visibility Cat B 1/2 SM, Cat C 1/2 SM, and Circling visibility Cat B 1/2 SM, Cat C 1/2 SM. Procedure NA at night.

MISSED APPROACH: Climb to 3400 then climbing right turn to 5000 direct GLUGS and hold.

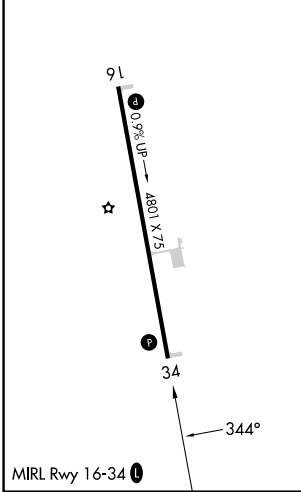
AWOS-3P 119,075	VTN ASOS 118,075	DENVER CENTER 127.95 338.2	CTAF 122.9
---------------------------	----------------------------	--------------------------------------	----------------------



NC-1, 31 OCT 2024 to 28 NOV 2024

NC-1, 31 OCT 2024 to 28 NOV 2024

ELEV 2724	D	TDZE 2724
-----------	----------	-----------



3400	5000	GLUGS	VGSI and descent angles not coincident (VGSI Angle 3.00/TCH 30).	GLUGS	5 NM Holding Pattern
↑	↷	✧			
RW34		ROLFS	GLUGS	5 NM Holding Pattern	
↙ 3.00° TCH 40		↖ 344°	↗ 164°	↘ 344°	↖ 6000 / 5000
4.5 NM		6 NM			
CATEGORY	A	B	C	D	
LNAV MDA	3380-1	656 (700-1)	3380-1 7/8 656 (700-1 7/8)	NA	
C CIRCLING	3380-1	656 (700-1)	3440-2 716 (800-2)	NA	