

WAAS CH 50343 W22A	APP CRS 220°	Rwy Idg TDZE Apt Elev	5000 5577 5589
--	------------------------	-----------------------------	---

RNAV (GPS) RWY 22

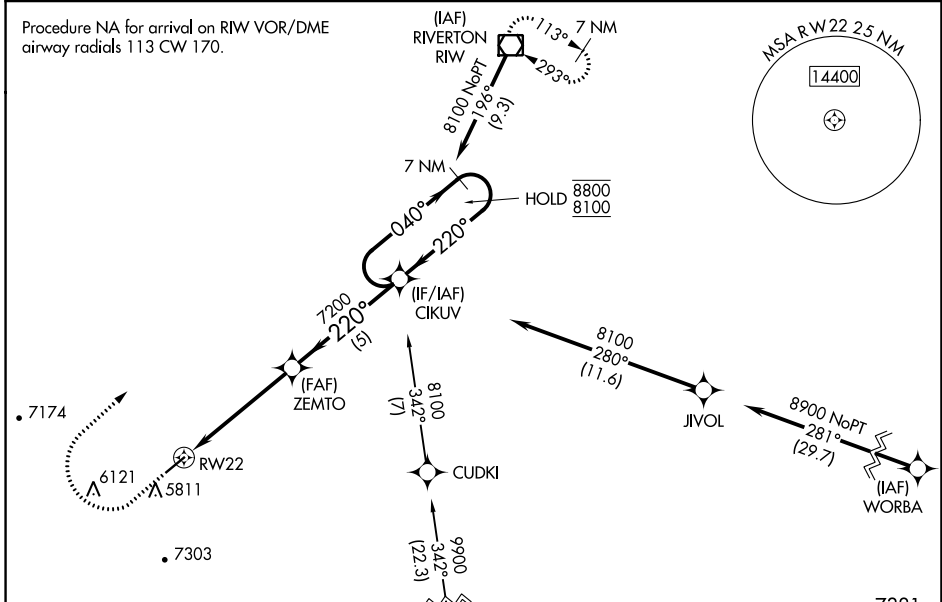
HUNT FLD (LND)

RNP APCH.

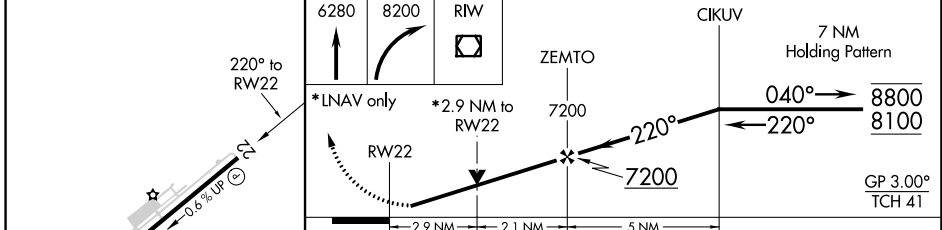
⚠ Circling NA southeast of Rws 4 and 22. Circling Rwy 4 NA at night. Rwy 22 helicopter visibility reduction below 3/4 SM NA. For uncompensated Baro-VNAV systems, LNAV/VNAV NA below -26°C or above 54°C.

MISSED APPROACH: (Do not exceed 165K until RW VOR/DME) Climb to 6280 then climbing right turn to 8200 direct RW VOR/DME and hold. #Missed approach requires minimum climb of 355 feet per NM to 6700.

ASOS 118.15	SALT LAKE CENTER 133.25 285.6	UNICOM 122.8 (CTAF) 0
-----------------------	---	---------------------------------



ELEV 5589	TDZE 5577
-----------	-----------



CATEGORY	A	B	C	D
LPV DA#	5827-3/4		250 (300-3/4)	NA
LPV DA	6060-1 3/8		483 (500-1 3/8)	NA
LNAV/VNAV DA	6040-1 3/8		463 (500-1 3/8)	NA
LNAV MDA	6460-1 1/4	883 (900-1 1/4)	6460-2 1/2 883 (900-2 1/2)	NA
C CIRCLING	6460-1 1/4	871 (900-1 1/4)	6540-3 951 (1000-3)	NA

REIL Rws 4 and 22 **0**
MIRL Rwy 4-22 **0**

NW-1, 31 OCT 2024 to 28 NOV 2024

NW-1, 31 OCT 2024 to 28 NOV 2024