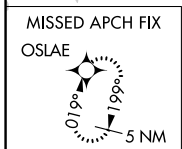
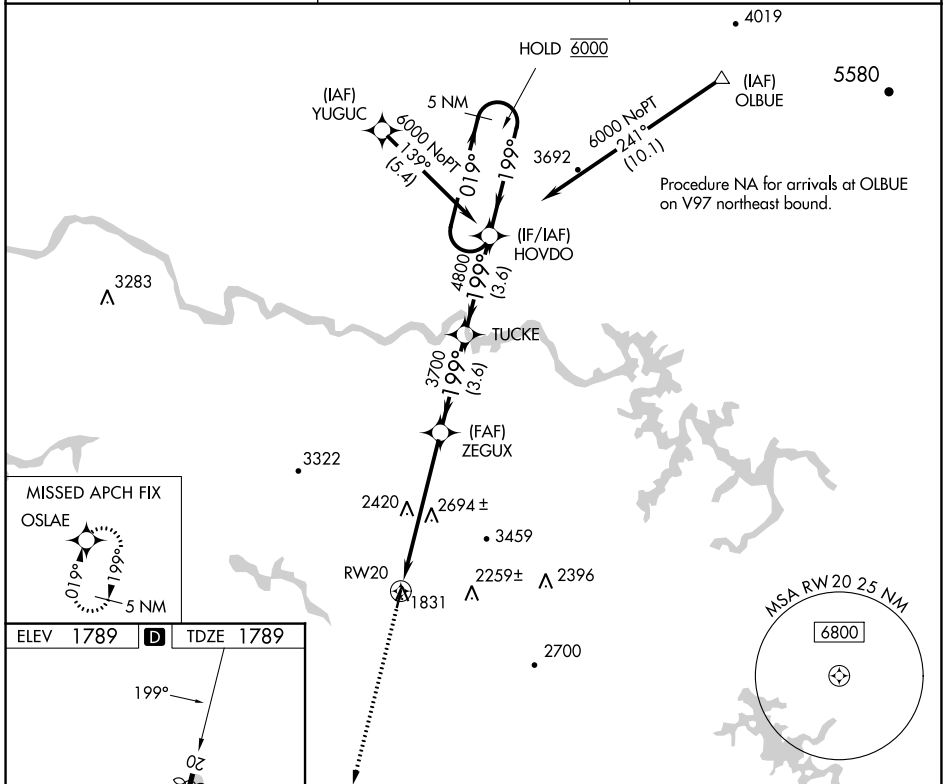


WAAS CH 86825 W20A	APP CRS 199°	Rwy Idg TDZE Apt Elev	3270 1789 1789
--	------------------------	-----------------------------	---

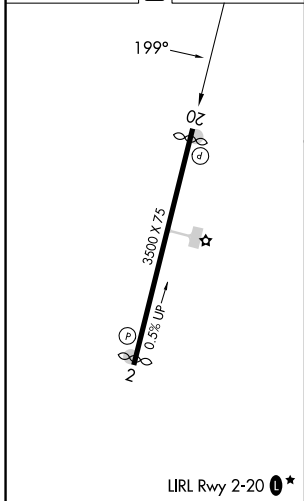
RNAV (GPS) RWY 20

MARTIN CAMPBELL FLD (1A3)

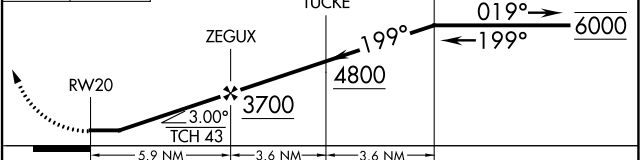
RNP APCH - GPS.		MISSED APPROACH: Climb to 6000 direct OSLAE and hold, continue climb in hold to 6000.	
<p>▼ Procedure NA at night. Rwy 20 helicopter visibility reduction below 1 SM NA.</p> <p>▲ NA Use Andrews altimeter setting, when not received, use Dalton altimeter setting and increase all MDAs 160 feet.</p>		RHP AWOS-3 119.675	ATLANTA CENTER 133.1 342.425
		CTAF 122.90*	



ELEV 1789	D	TDZE 1789
-----------	----------	-----------



6000	OSLAE	VGSI and descent angles not coincident (VGSI Angle 4.00/TCH 43).	5 NM Holding Pattern
------	-------	--	----------------------



CATEGORY	A	B	C	D
LP MDA	2960-1¼ 1171 (1200-1¼)	2960-1½ 1171 (1200-1½)	2960-3 1171 (1200-3)	NA
LNAV MDA	3020-1¼ 1231 (1300-1¼)	3020-1½ 1231 (1300-1½)	3020-3 1231 (1300-3)	NA

SE-1, 31 OCT 2024 to 28 NOV 2024

SE-1, 31 OCT 2024 to 28 NOV 2024