

APP CRS	Rwy Idg	<b>3500</b>
<b>088°</b>	TDZE	<b>916</b>
	Apt Elev	<b>916</b>

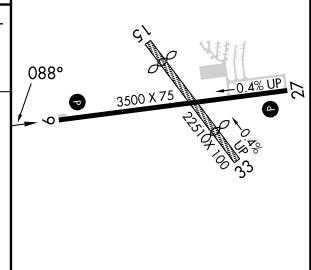
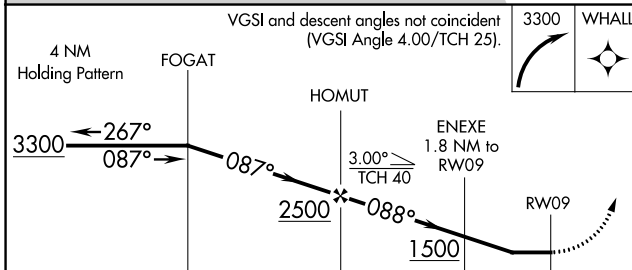
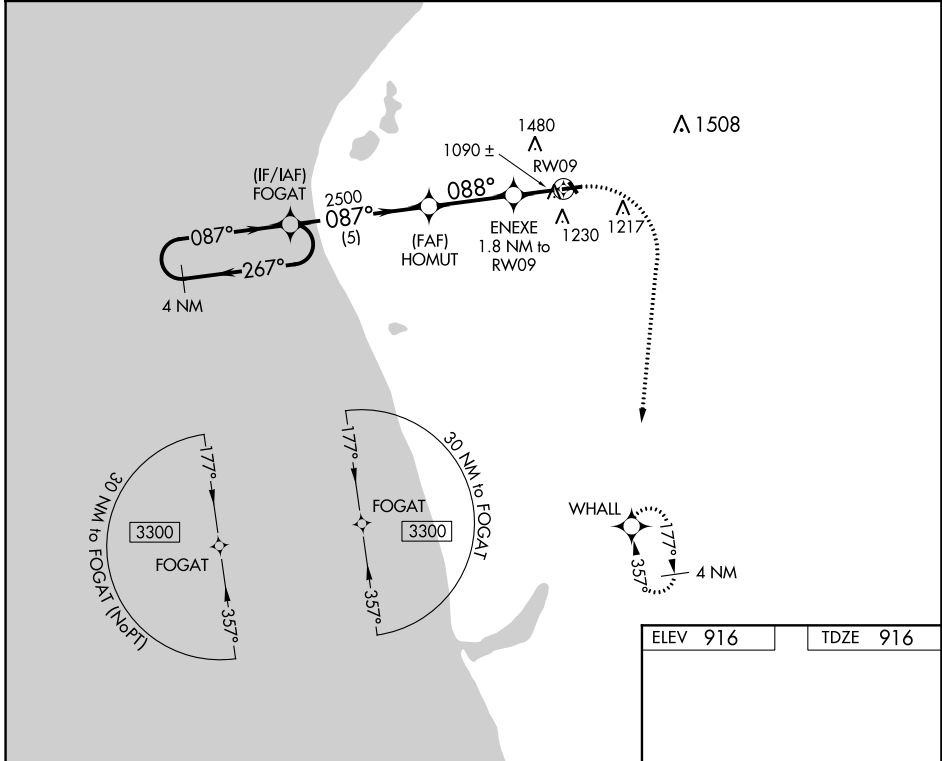
# RNAV (GPS) RWY 9

OCEANA COUNTY (C04)

**⚠ NA** When local altimeter setting not received, use Fremont altimeter setting and increase all MDAs 80 feet. DME/DME RNP-0.3 NA. Procedure NA at night. Helicopter visibility reduction below 1 SM NA. Circling NA to Rwy 15 and 33.

**MISSED APPROACH:** Climbing right turn to 3300 direct WHALL and hold.

<b>AWOS-AV</b> <b>122.7</b>	<b>GREAT LAKES APP CON*</b> <b>119.8 290.35</b>	<b>UNICOM</b> <b>122.7 (CTAF)</b>
--------------------------------	--	--------------------------------------



CATEGORY	A	B	C	D
RNAV MDA	1340-1	424 (500-1)	NA	NA
CIRCLING	1540-1 624 (700-1)	1780-1¼ 864 (900-1¼)	NA	NA

MIRL Rwy 09-27

EC-1, 31 OCT 2024 to 28 NOV 2024

EC-1, 31 OCT 2024 to 28 NOV 2024