

| | | |
|--|------------------------|---|
| WAAS CH 49231 W14A | APP CRS 138° | Rwy Idg 3401 TDZE 1206 Apt Elev 1206 |
|--|------------------------|---|

RNAV (GPS) RWY 14

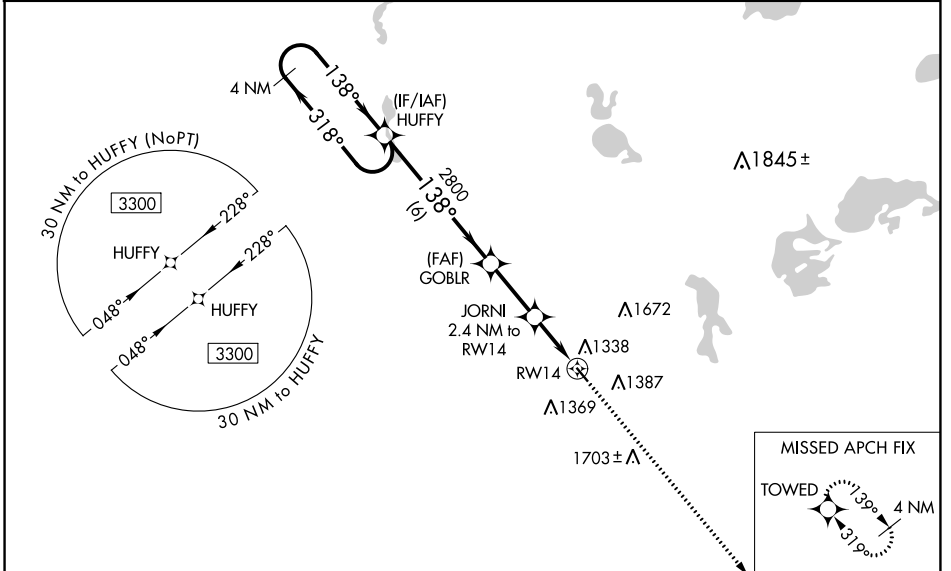
ELBOW LAKE MUNI/PRIDE OF THE PRAIRIE (Y63)

RNP APCH-GPS.

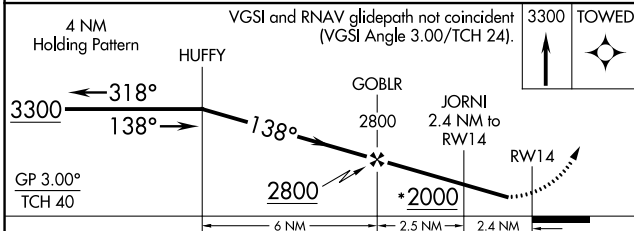
⚠ Baro-VNAV NA when using Fergus Falls altimeter setting. For uncompensated Baro-VNAV systems LNAV/VNAV NA below -17°C or above 54°C. Circling NA northeast of Rwy 14-32. Procedure NA at night. Rwy 14 helicopter visibility reduction below ¼ SM NA. When local altimeter setting not received, use Fergus Falls altimeter setting: increase LPV DA to 1504 feet; increase LNAV/VNAV DA to 1605 feet and visibility all Cats ¼ mile; increase all MDAs 60 feet. Circling NA to Rwys 11W and 29W.

MISSED APPROACH:
Climb to 3300 direct TOWED and hold.

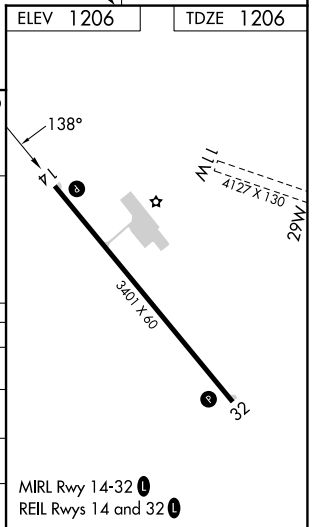
| | | |
|--------------------------|--|----------------------|
| AWOS-3 118.075 | MINNEAPOLIS CENTER 126.1 269.2 | CTAF 122.9 |
|--------------------------|--|----------------------|



| | |
|-----------|-----------|
| ELEV 1206 | TDZE 1206 |
|-----------|-----------|



| CATEGORY | A | B | C | D |
|--------------|-----------------------|-----------------------|---|----|
| LPV DA | 1456-1 | 250 (300-1) | | NA |
| LNAV/VNAV DA | 1557-1½ | 351 (400-1½) | | NA |
| LNAV MDA | 1600-1 | 394 (400-1) | | NA |
| CIRCLING | 1600-1 394 (400-1) | 1680-1 474 (500-1) | | NA |



NC-1, 31 OCT 2024 to 28 NOV 2024

NC-1, 31 OCT 2024 to 28 NOV 2024