

WAAS CH 53731 W32A	APP CRS 319°	Rwy Idg TDZE 1206 Apt Elev 1206	3401
--	------------------------	---	-------------

RNAV (GPS) RWY 32

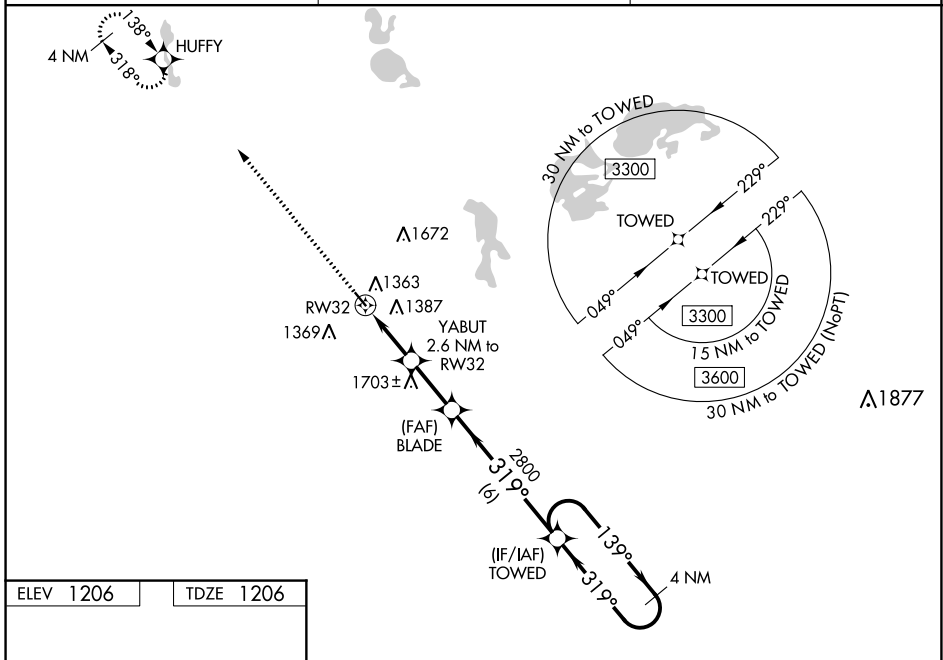
ELBOW LAKE MUNI/PRIDE OF THE PRAIRIE (Y63)

RNP APCH-GPS.

⚠️ NA Baro-VNAV NA when using Fergus Falls altimeter setting. For uncompensated Baro-VNAV systems, LNAV/VNAV NA below -17°C or above 54°C. Circling NA northeast of Rwy 14-32. Procedure NA at night. When local altimeter setting not received, use Fergus Falls altimeter setting: increase LPV DA to 1504 feet; increase LNAV/VNAV DA to 1643 feet and visibility all Cats ½ mile; increase all MDAs 60 feet. Circling NA to Rwy's 11W and 29W.

MISSED APPROACH: Climb to 3300 direct HUFFY and hold.

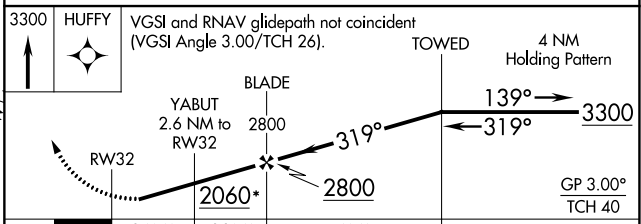
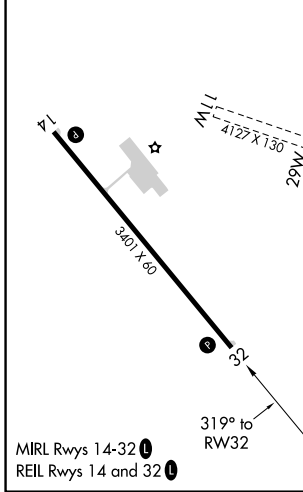
AWOS-3 118.075	MINNEAPOLIS CENTER 126.1 269.2	CTAF 122.9
--------------------------	--	----------------------



NC-1, 31 OCT 2024 to 28 NOV 2024

NC-1, 31 OCT 2024 to 28 NOV 2024

ELEV 1206	TDZE 1206
-----------	-----------



CATEGORY	A	B	C	D
LPV DA	1456-1	250 (300-1)		NA
LNAV/VNAV DA	1595-1 ³ / ₈	389 (400-1 ³ / ₈)		NA
LNAV MDA	1580-1	374 (400-1)		NA
CIRCLING	1600-1 394 (400-1)	1680-1 474 (500-1)		NA