

WAAS CH <b>62842</b> <b>W28A</b>	APP CRS <b>284°</b>	Rwy Idg TDZE Apt Elev	<b>5728</b> <b>5933</b> <b>5933</b>
--	------------------------	-----------------------------	---

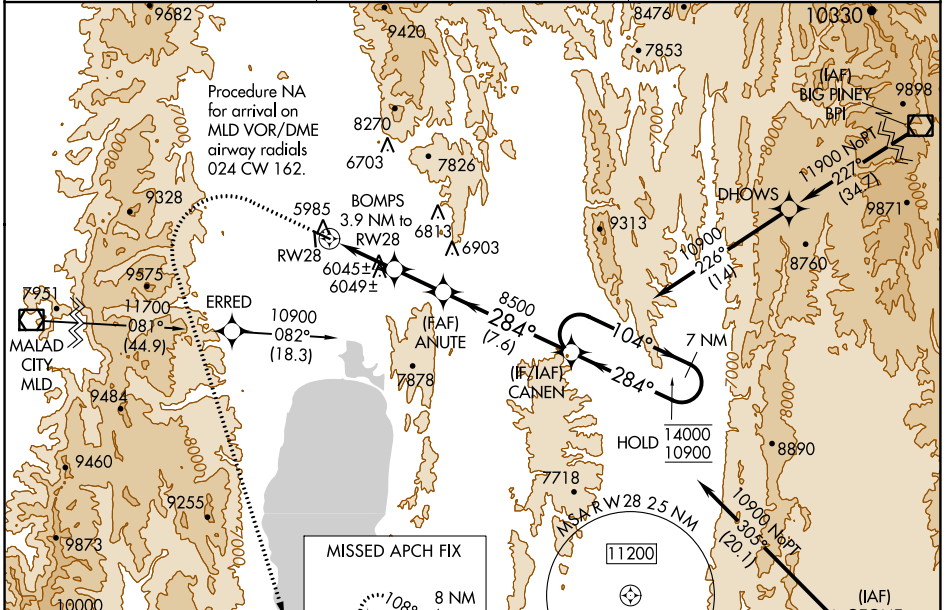
# RNAV (GPS) RWY 28

BEAR LAKE COUNTY (1U7)

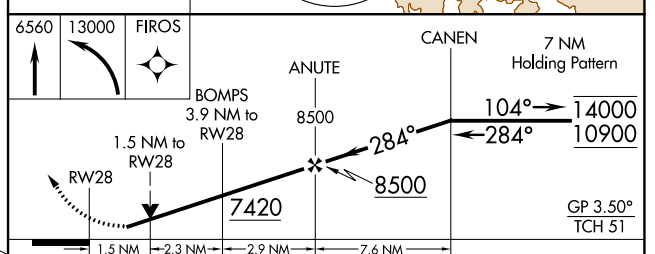
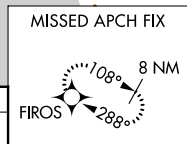
RNP APCH - GPS.  
 For uncompensated Baro-VNAV systems, LNAV/VNAV NA below -26°C or above 35°C.

MISSED APPROACH: (Do not exceed 185K until FIROs)  
 Climb to 6560 then climbing left turn to 13000 direct FIROs and hold.

AWOS-3 <b>118.525</b>	SALT LAKE CENTER <b>128.35 239.25</b>	UNICOM <b>122.8 (CTAF)</b>
--------------------------	--	-------------------------------



ELEV 5933	TDZE 5933
-----------	-----------



CATEGORY	A	B	C	D
LPV DA	6305-1 372 (400-1)			
LNAV/VNAV DA	6366-1¼ 433 (500-1¼)			
LNAV MDA	6560-1 627 (700-1)	6560-1¾ 627 (700-1¾)		
CIRCLING	6560-1 627 (700-1)	6720-2¼ 787 (800-2¼)	7140-3 1207 (1300-3)	

MIRL Rwy 10-28  
 REIL Rwy 10 and 28

42°15'N-111°20'W

# RNAV (GPS) RWY 28

NW-1, 31 OCT 2024 to 28 NOV 2024

NW-1, 31 OCT 2024 to 28 NOV 2024