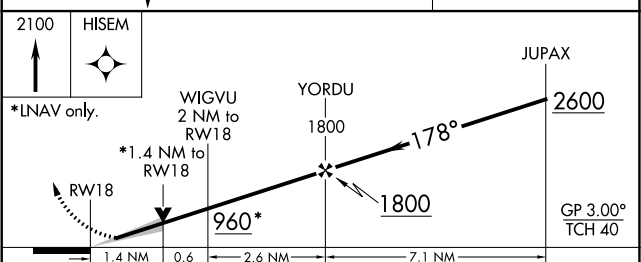
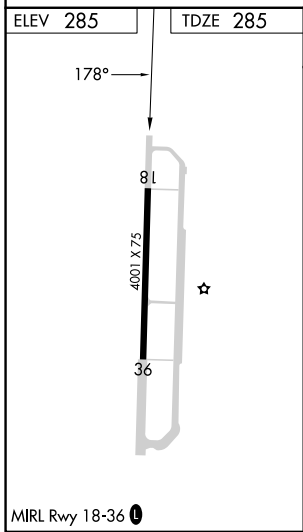
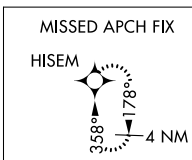
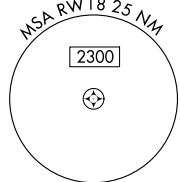
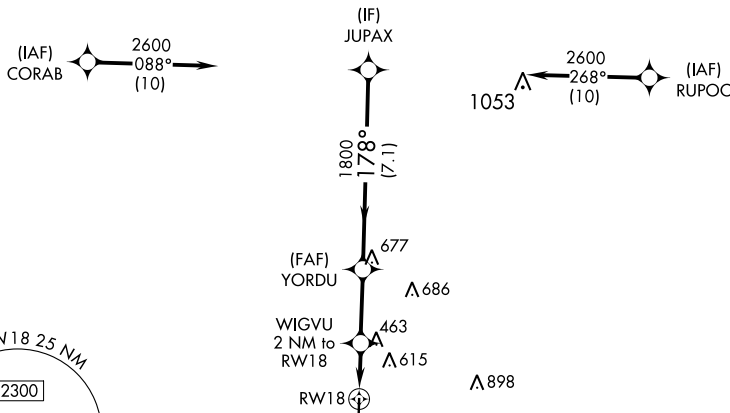


| | | | |
|--|------------------------|-----------------------------|---|
| WAAS CH 50522 W18A | APP CRS 178° | Rwy Idg TDZE Apt Elev | 4001 285 285 |
|--|------------------------|-----------------------------|---|

RNAV (GPS) RWY 18

HEARNE MUNI (LHB)

| | | | |
|---|--|---|----------------|
| RNP APCH. | | MISSED APPROACH: Climb to 2100 direct HISEM and hold. | |
| <p>▲ Baro-VNAV and VDP NA when using College Station altimeter setting. For uncompensated Baro-VNAV systems, LNAV/VNAV NA below -15°C or above 54°C.</p> | | | |
| AWOS-3 118.675 | HOUSTON APP CON 134.3 360.85 | CTAF 122.9 | 123.3 0 |



| CATEGORY | A | B | C | D |
|--------------|----------------------------------|---|---|----|
| LPV DA | 485- ³ / ₄ | 200 (200- ³ / ₄) | | NA |
| LNAV/VNAV DA | 583-1 | 298 (300-1) | | NA |
| LNAV MDA | 780-1 | 495 (500-1) | 780-1 ³ / ₈ 495 (500-1 ³ / ₈) | NA |
| CIRCLING | 800-1 515 (600-1) | 920-1 635 (700-1) | 1020-2 735 (800-2) | NA |

SC-5, 31 OCT 2024 to 28 NOV 2024

SC-5, 31 OCT 2024 to 28 NOV 2024