

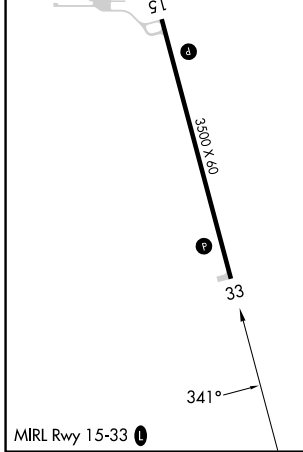
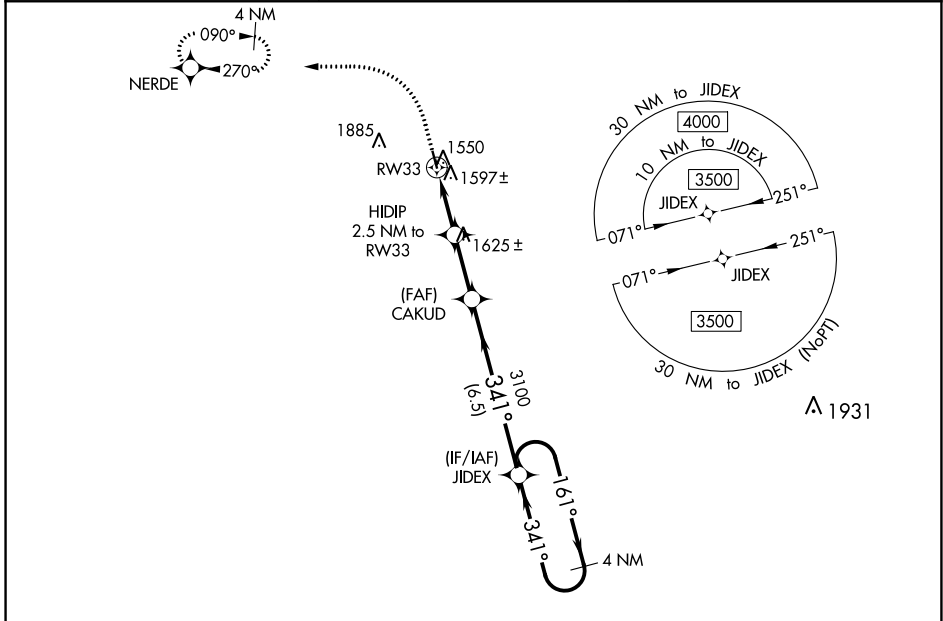
WAAS CH 53540 W33A	APP CRS 341°	Rwy ldg 3500 TDZE 1511 Apt Elev 1511
--	------------------------	---

RNAV (GPS) RWY 33

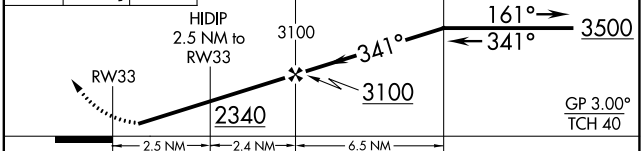
LAKOTA MUNI (5L \emptyset)

RNP APCH - GPS.	MISSED APPROACH: Climb to 2300 then climbing left turn to 3300 direct NERDE and hold.
-----------------	---

DVL AWOS-3PT 125.875	MINNEAPOLIS CENTER 132.15 269.6	UNICOM 122.8 (CTAF) \emptyset
--------------------------------	---	--



ELEV 1511	TDZE 1511	R-5403	2300	3300	NERDE	VGSI and RNAV glidepath not coincident (VGSI Angle 3.00/TCH 26).
-----------	-----------	--------	------	------	-------	--



CATEGORY	A	B	C	D
LPV DA	1827-1 $\frac{1}{8}$	316 (400-1 $\frac{1}{8}$)		NA
LNAV/VNAV DA	1827-1 $\frac{1}{8}$	316 (400-1 $\frac{1}{8}$)		NA
LNAV MDA	1920-1	409 (500-1)	1920-1 $\frac{1}{8}$ 409 (500-1 $\frac{1}{8}$)	NA
C CIRCLING	2080-1 569 (600-1)	2200-1 689 (700-1)	2320-2 $\frac{1}{4}$ 809 (900-2 $\frac{1}{4}$)	NA

NC-1, 31 OCT 2024 to 28 NOV 2024

NC-1, 31 OCT 2024 to 28 NOV 2024