

APP CRS	Rwy Idg	1991
068°	TDZE	547
	Apt Elev	550

RNAV (GPS) RWY 7

KELLER BROTHERS (Ø8N)

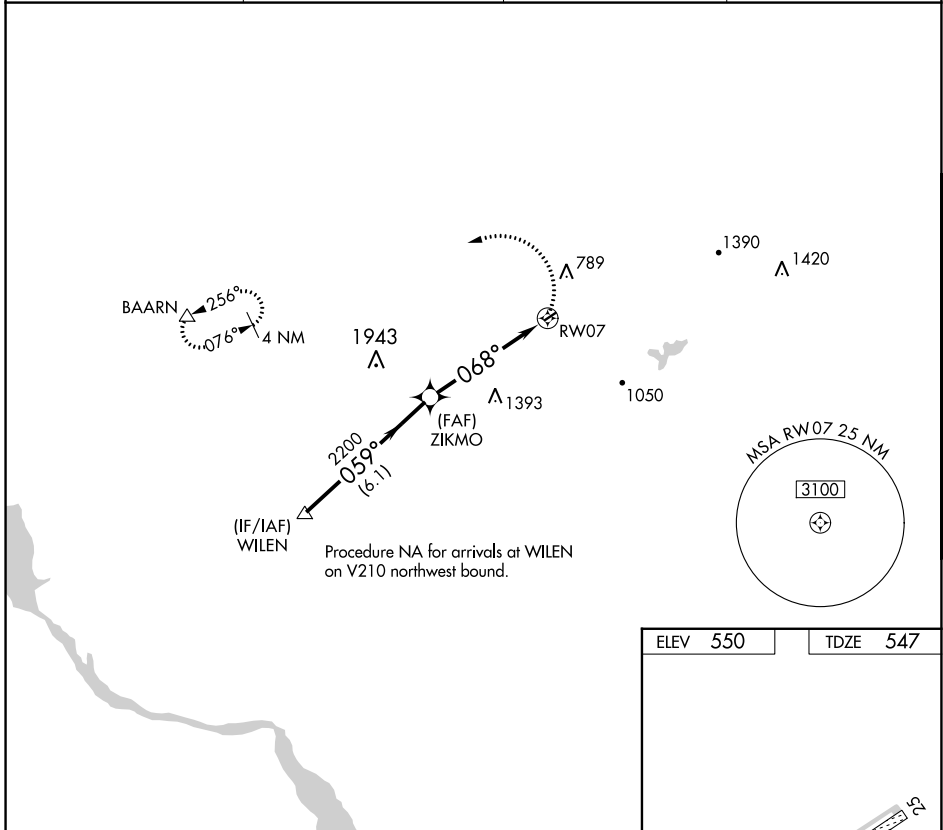
RNP APCH.

▼ Procedure NA at night. Rwy 7 helicopter visibility reduction below 1 SM NA. Use Lancaster altimeter setting; when not received, use Reading altimeter setting and increase all MDA 40 feet.

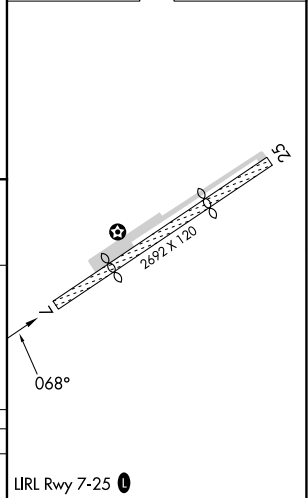
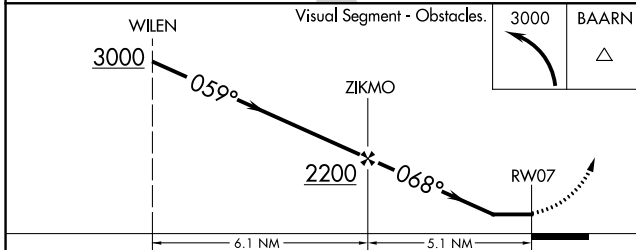
▲ NA

MISSED APPROACH: Climbing left turn to 3000 direct BAARN and hold.

LNS ASOS 125.675	HARRISBURG APP CON 126.45 281.525	CTAF 122.9	121.9 0
----------------------------	---	----------------------	----------------



ELEV 550	TDZE 547
----------	----------



CATEGORY	A	B	C	D
LNAV MDA	1640-1¼ 1093 (1100-1¼)	1640-1½ 1093 (1100-1½)	NA	

NE-4, 31 OCT 2024 to 28 NOV 2024

NE-4, 31 OCT 2024 to 28 NOV 2024