

WAAS CH 62840 W17A	APP CRS 171°	Rwy Idg TDZE 693 Apt Elev 693	5943
--	------------------------	---	-------------

RNAV (GPS) RWY 17

KENNETH COPELAND (4T2)

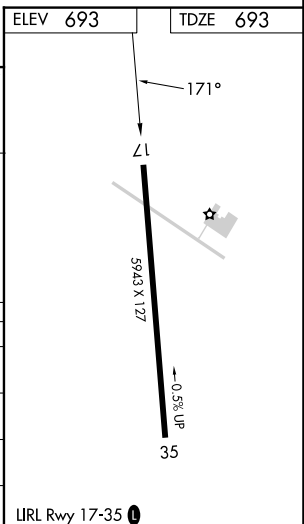
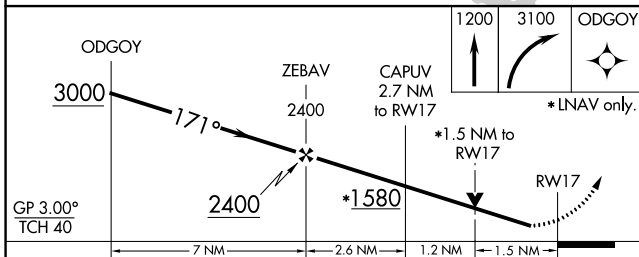
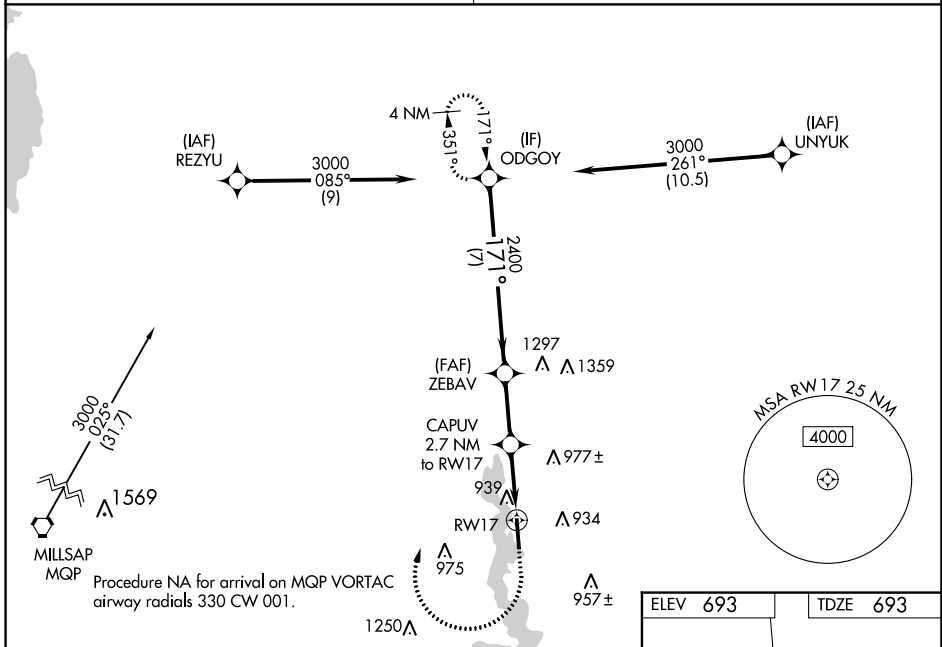
RNP APCH.

⚠ Baro-VNAV and VDP NA when using Fort Worth Meacham Intl altimeter setting. Rwy 17 helicopter visibility reduction below $\frac{3}{4}$ SM NA. For uncompensated Baro-VNAV systems, LNAV/VNAV NA below -16°C or above 54°C. Obtain local altimeter setting on CTAF; when not received, use Fort Worth Meacham Intl altimeter setting; Increase LPV DA to 973 feet; increase LNAV/VNAV DA to 1135 feet; increase all MDA 40 feet and LNAV Cat C/D and Circling Cat C visibility $\frac{1}{4}$ SM.

MISSED APPROACH: Climb to 1200 then climbing right turn to 3100 direct ODGOY and hold.

LONE STAR APP CON
125.8 257.95

UNICOM
123.075 (CTAF)



CATEGORY	A	B	C	D
LPV DA	943-1 250 (300-1)			
LNAV/VNAV DA	1105-1 $\frac{3}{8}$ 412 (500-1 $\frac{3}{8}$)			
LNAV MDA	1200-1 507 (600-1)	1200-1 $\frac{3}{8}$ 507 (600-1 $\frac{3}{8}$)		
C CIRCLING	1240-1 547 (600-1)	1340-1 $\frac{3}{4}$ 647 (700-1 $\frac{3}{4}$)	1440-2 $\frac{1}{2}$ 747 (800-2 $\frac{1}{2}$)	

SC-2, 31 OCT 2024 to 28 NOV 2024

SC-2, 31 OCT 2024 to 28 NOV 2024