

APP CRS	Rwy Idg	N/A
<b>264°</b>	TDZE	N/A
	Apt Elev	<b>720</b>

# RNAV (GPS)-A

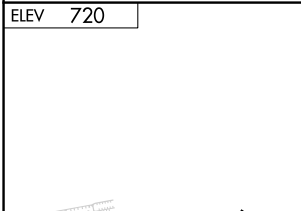
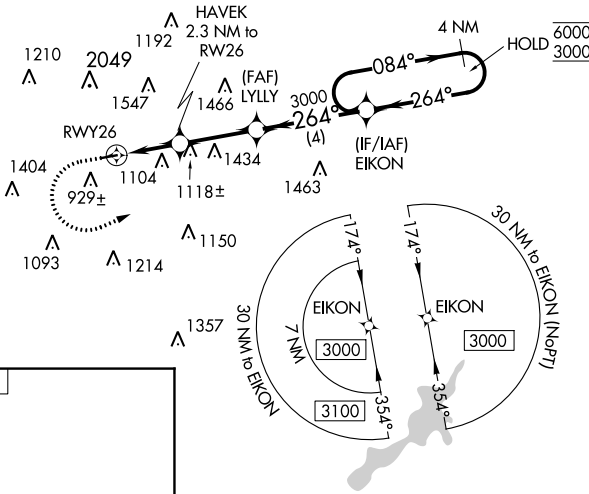
MORAINE AIR PARK (I73)

RNP APCH - GPS.		MISSED APPROACH: Climb to 1500 then climbing left turn to 3000 direct EIKON and hold.
▼	Procedure NA at night.	
▲	NA	Rwy 8 and 26 helicopter visibility reduction below 1 SM NA. Use Dayton-Wright Brothers altimeter setting.

MGY ASOS <b>118.375</b>	COLUMBUS APP CON <b>118.85 269.275</b>	UNICOM <b>122.7 (CTAF)</b>
----------------------------	---	-------------------------------

EC-2, 31 OCT 2024 to 28 NOV 2024

EC-2, 31 OCT 2024 to 28 NOV 2024



ELEV 720	1500	3000	EIKON	4 NM Holding Pattern
	HAVEK 2.3 NM to RW26	LYLly	EIKON	4 NM Holding Pattern
	RW26	264°	3000	084°/264°
	1780	3000	6000	3000
	4.11° TCH 40			
	2.3 NM	2.8 NM	4 NM	
CATEGORY	A	B	C	D
CIRCLING	1440-1 720 (800-1)	1520-1 800 (800-1)	NA	