

WAAS CH <b>42937</b> <b>W13A</b>	APP CRS <b>126°</b>	Rwy Idg <b>3314</b> TDZE <b>160</b> Apt Elev <b>162</b>
----------------------------------------	------------------------	---------------------------------------------------------------

# RNAV (GPS) RWY 13

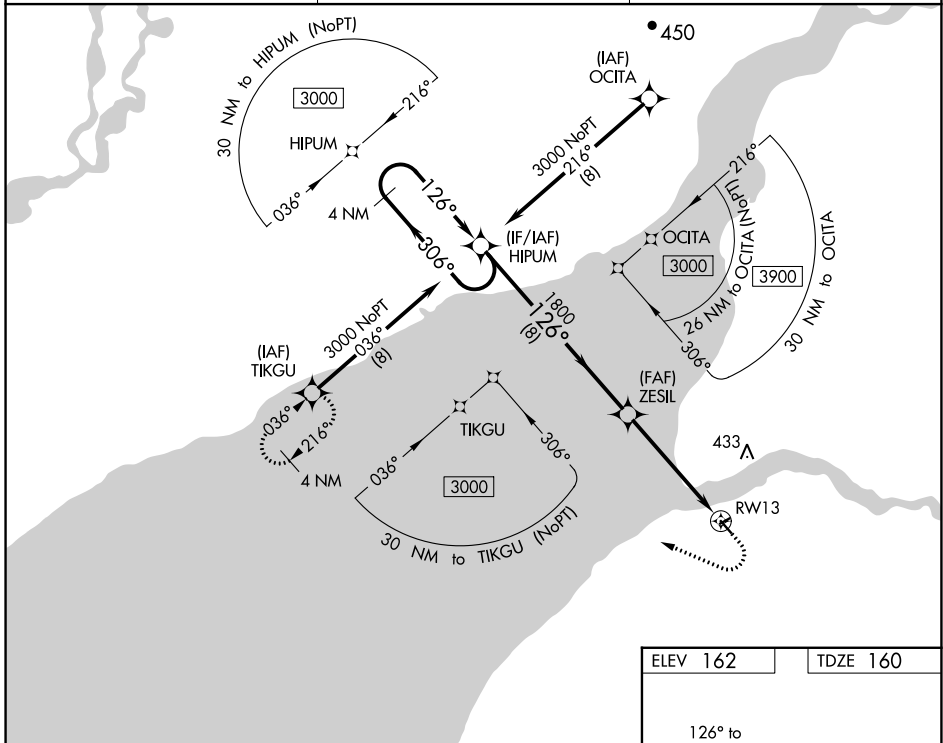
SOUTH NAKNEK NR 2 (WSN)(PFWS)

RNP APCH.

▼ When local altimeter setting not received, use King Salmon altimeter setting and increase all  
▲ MDA 40 feet. Circling Rwy 5 NA at night. VDP NA when using King Salmon altimeter setting.

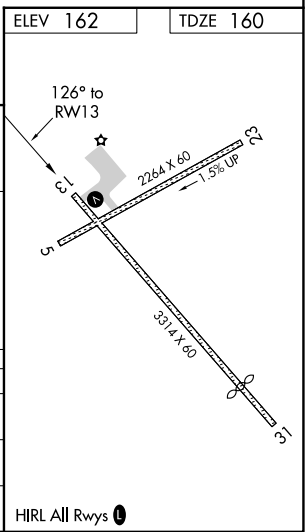
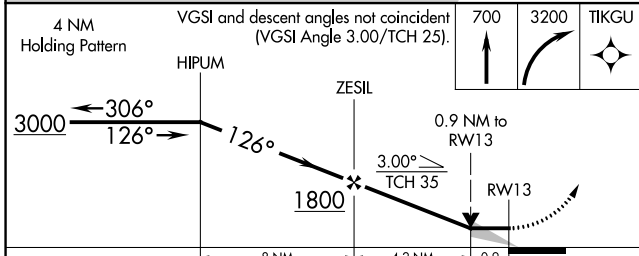
MISSED APPROACH: Climb to 700 then climbing right turn to 3200 direct TIKGU and hold.

AWOS-3P <b>121.575</b>	ANCHORAGE CENTER <b>124.8 354.0</b>	CTAF <b>122.9</b>
---------------------------	----------------------------------------	----------------------



AK, 31 OCT 2024 to 26 DEC 2024

AK, 31 OCT 2024 to 26 DEC 2024



CATEGORY	A	B	C	D
LP MDA	480-1	320 (400-1)		NA
LNAV MDA	500-1	340 (400-1)		NA
CIRCLING	560-1 398 (400-1)	620-1 458 (500-1)		NA

HIRL All Rwy's