

RNAV (GPS) RWY 1

IUKA (15M)

APP CRS	Rwy Idg	4001
007°	TDZE	620
	Apt Elev	626

RNP APCH-GPS.

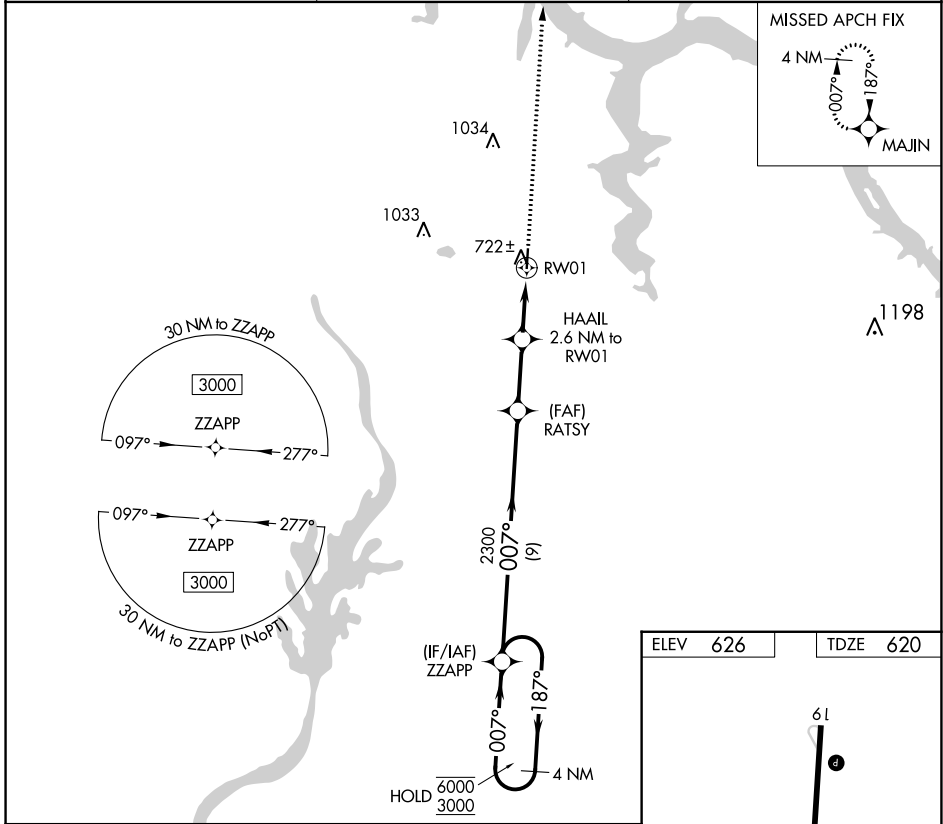
▼ Procedure NA at night. Rwy 1 helicopter visibility reduction below 1 SM NA.
▲ NA Use Muscle Shoals altimeter setting.

MISSED APPROACH: Climb to 3000 direct MAJIN and hold.

MSL ASOS
119.425

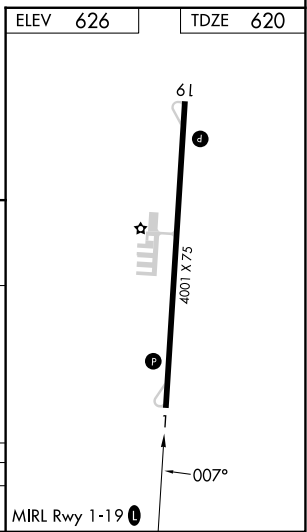
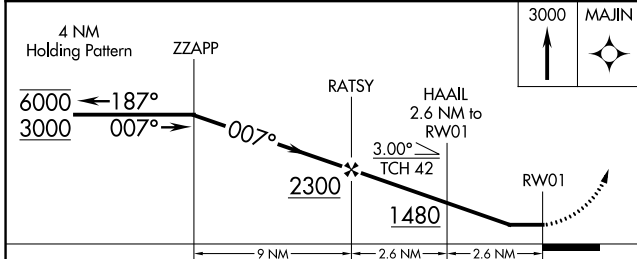
MEMPHIS CENTER
124.35 318.1

CTAF
122.9



SC-4, 31 OCT 2024 to 28 NOV 2024

SC-4, 31 OCT 2024 to 28 NOV 2024



CATEGORY	A	B	C	D
LNAV MDA	1060-1	440 (500-1)		NA

IUKA (15M)