

IUKA, MISSISSIPPI

AL-11013 (FAA)

22195

APP CRS	Rwy Idg	4001
187°	TDZE	626
	Apt Elev	626

RNAV (GPS) RWY 19

IUKA (15M)

RNP APCH-GPS.

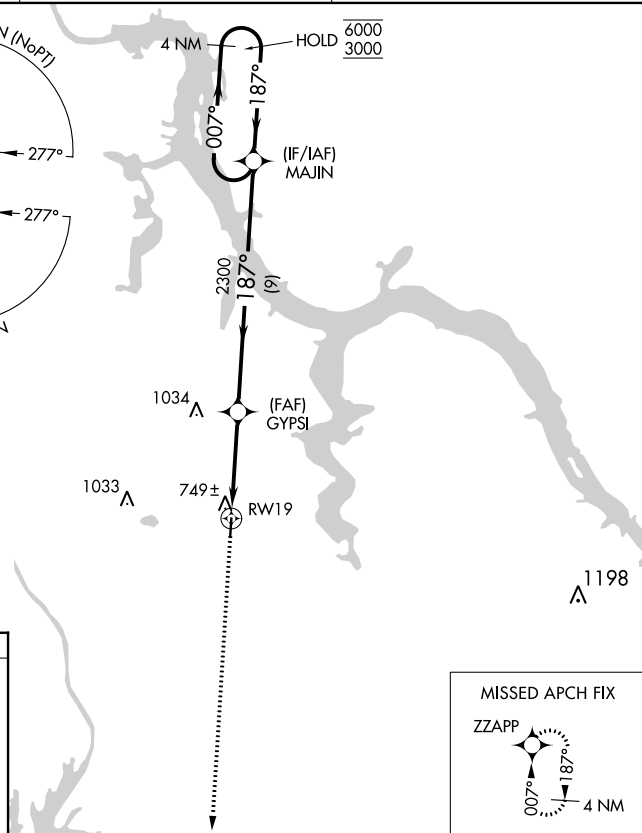
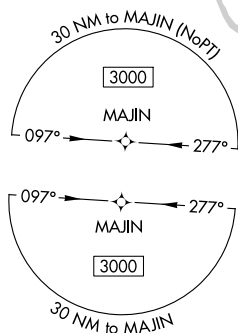
▲ NA Procedure NA at night. Rwy 19 helicopter visibility reduction below 1 SM NA. Use Muscle Shoals altimeter setting.

MISSED APPROACH: Climb to 3000 direct ZZAPP and hold.

MSL ASOS
119.425

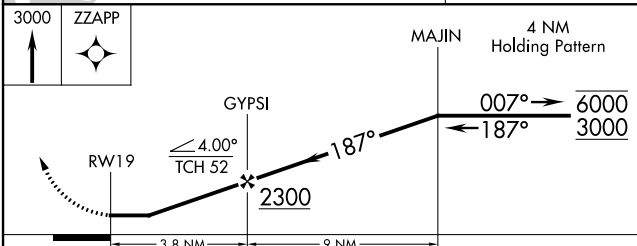
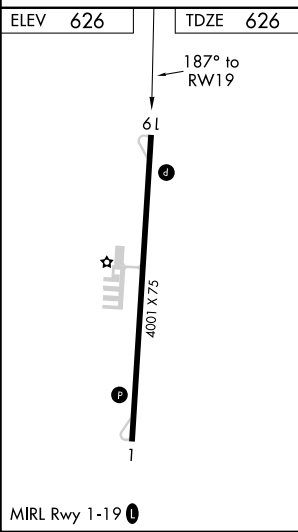
MEMPHIS CENTER
124.35 318.1

CTAF
122.9 0



SC-4, 31 OCT 2024 to 28 NOV 2024

SC-4, 31 OCT 2024 to 28 NOV 2024



CATEGORY	A	B	C	D
LNAV MDA	1080-1	454 (500-1)		NA

IUKA, MISSISSIPPI
Orig 14JUL22

34°46'N-88°10'W

IUKA (15M)

RNAV (GPS) RWY 19