

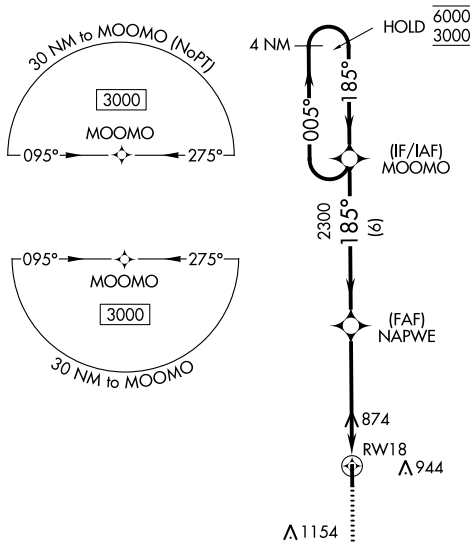
APP CRS	Rwy Idg	4001
185°	TDZE	671
	Apt Elev	671

RNAV (GPS) RWY 18

DELPHI MUNI (I19)

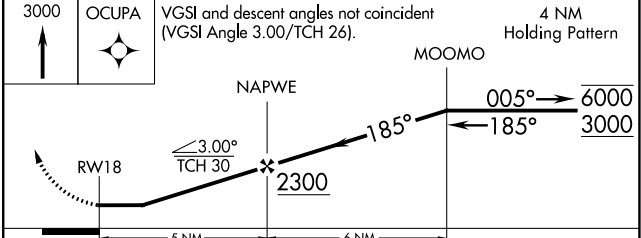
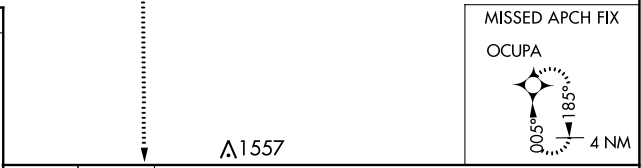
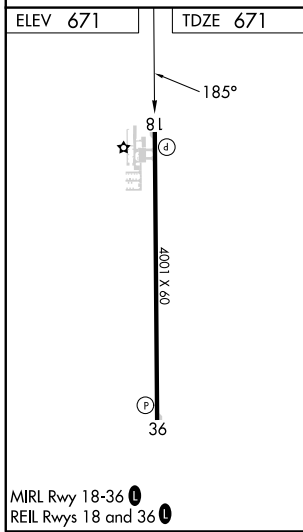
RNP APCH - GPS.	MISSED APPROACH: Climb to 3000 direct OCUPA and hold.
<p>NA Rwy 18 helicopter visibility reduction below 1 SM NA. Use Monticello altimeter setting. Procedure NA at night.</p>	

MCX AWOS-3P 124.05	GRISSOM APP CON* 121.05 338.275	CTAF 122.9
------------------------------	---	----------------------



EC-2, 31 OCT 2024 to 28 NOV 2024

EC-2, 31 OCT 2024 to 28 NOV 2024



CATEGORY	A	B	C	D
LNAV MDA	1160-1	489 (500-1)	NA	
CIRCLING	1160-1	1220-1	NA	
	489 (500-1)	549 (600-1)		