

HI-ILS or LOC X RWY 34

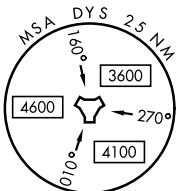
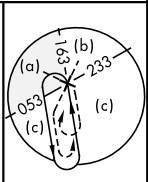
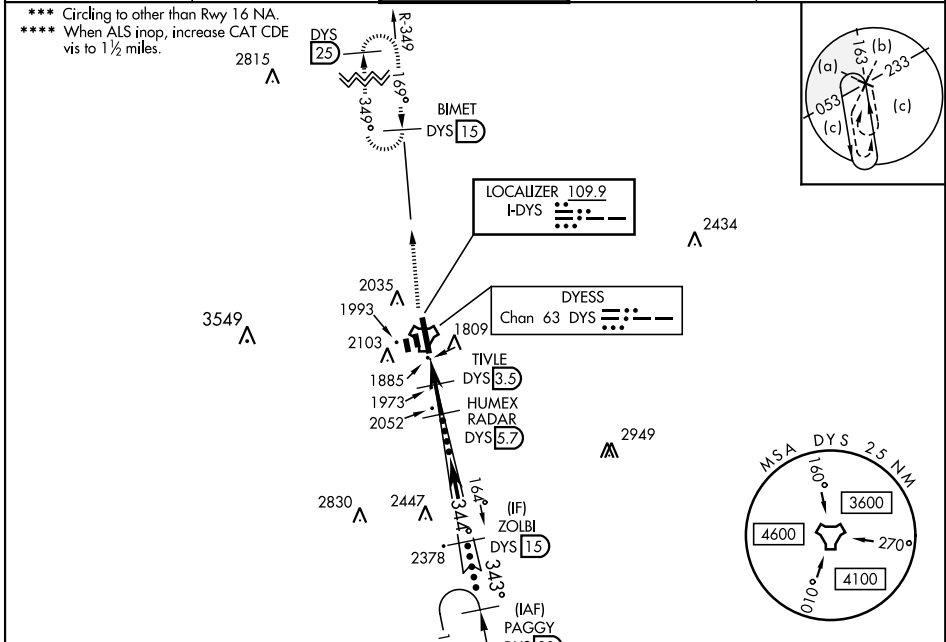
LOC I-DYS 109.9	APCH CRS 344°	Rwy Idg 13,500
		TDZE 1788
		Arprt Elev 1790

AL-2 [USAF]

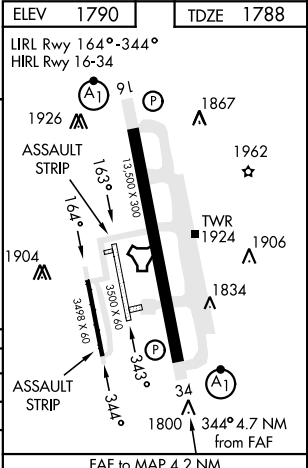
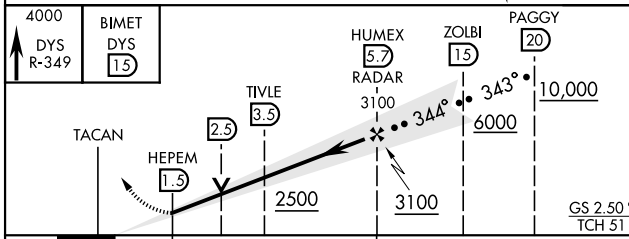
DYESS AFB (KDYS)

RADAR or DME required.	ALSIF-1 	MISSED APPROACH: Climb to 4000 via DYS TACAN R-349 to BIMET and hold.
* When ALS inop, increase CAT CDE RVR to 40 and vis to 3/4 mile.		
** When ALS inop, increase CAT CDE vis to 1 3/8 miles.		

ATIS ★ 269.175	ABILENE APP CON 125.0 338.3 EAST 127.2 282.3 WEST	TOWER 133.0 257.675	GND CON 118.35 275.8	ASR
--------------------------	---	-------------------------------	--------------------------------	-----



EMERG SAFE ALT 100 NM 4600



CATEGORY	C	D	E
S-ILS 34 *	1988/24	200 (200-1/2)	
S-LOC 34 **	2240/45	452 (500-7/8)	
C CIRCLING ***	2460-1 3/4 670 (700-1 3/4)	2460-2 670 (700-2)	2460-2 1/4 670 (700-2 1/4)
WITHOUT LAST STEPDOWN FIX			
S-LOC 34 ****	2320/55	532 (600-1)	

Knots	120	140	160	180	200
Min:Sec	2:06	1:48	1:35	1:24	1:16

HI-ILS or LOC X RWY 34

SC-2, 28 NOV 2024 to 26 DEC 2024

SC-2, 28 NOV 2024 to 26 DEC 2024