

CLOUD-FOUR ALPHA DEPARTURE (CLOUA4•CLOUD)

ALAMOGORDO, NEW MEXICO

ATIS ★ 273.5
 CLNC DEL
 126.7 289.4
 GND CON
 127.05 275.8
 TOWER ★
 119.3 254.4
 DEP CON
 128.1 284.0
 ALBUQUERQUE CENTER
 132.65 257.6

AL-7 [USAF]

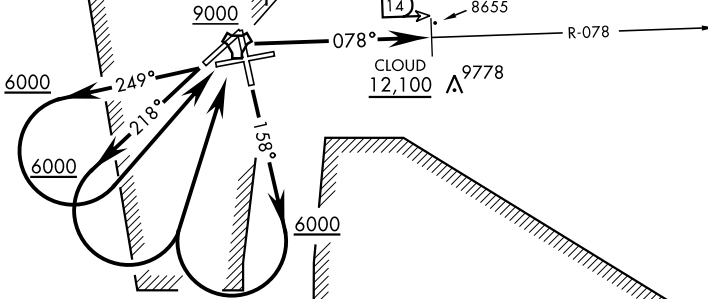
Rwy	Knots	60	120	180	240	300	360
16/25	V/V(fpm)	450	900	1350	1800	2250	2270
22	V/V(fpm)	440	880	1320	1760	2200	2640

Minimum climb to 12,100

BEAK B MOA

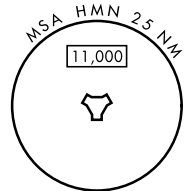
BEAK C MOA

HOLLOMAN
 Chan 92 HMN



**RADAR REQUIRED WHEN
 R-5103C NOT UNDER
 HOLLOMAN APPROACH
 OR CHEROKEE
 CONTROL**

R-5103C



DEPARTURE ROUTE DESCRIPTION

TAKEOFF RWY 16: Climb on track 158°. When leaving 6000 turn right direct HMN TACAN, then proceed via HMN R-078 to CLOUD (HMN R-078/14), then via assigned routing. Cross HMN at or above 9000. Cross CLOUD at or above 12,100.

TAKEOFF RWY 22: Climb on track 218°. When leaving 6000 turn left direct HMN TACAN, then proceed via HMN R-078 to CLOUD (HMN R-078/14), then via assigned routing. Cross HMN at or above 9000. Cross CLOUD at or above 12,100.

TAKEOFF RWY 25: Climb on track 249°. When leaving 6000 turn left direct HMN TACAN, then proceed via HMN R-078 to CLOUD (HMN R-078/14), then via assigned routing. Cross HMN at or above 9000. Cross CLOUD at or above 12,100.

CLOUD-FOUR ALPHA DEPARTURE (CLOUA4•CLOUD)

ALAMOGORDO, NEW MEXICO

HOLLOMAN AFB (KHMN)