

ALAMOGORDO, NEW MEXICO

# RNAV (GPS) RWY 16

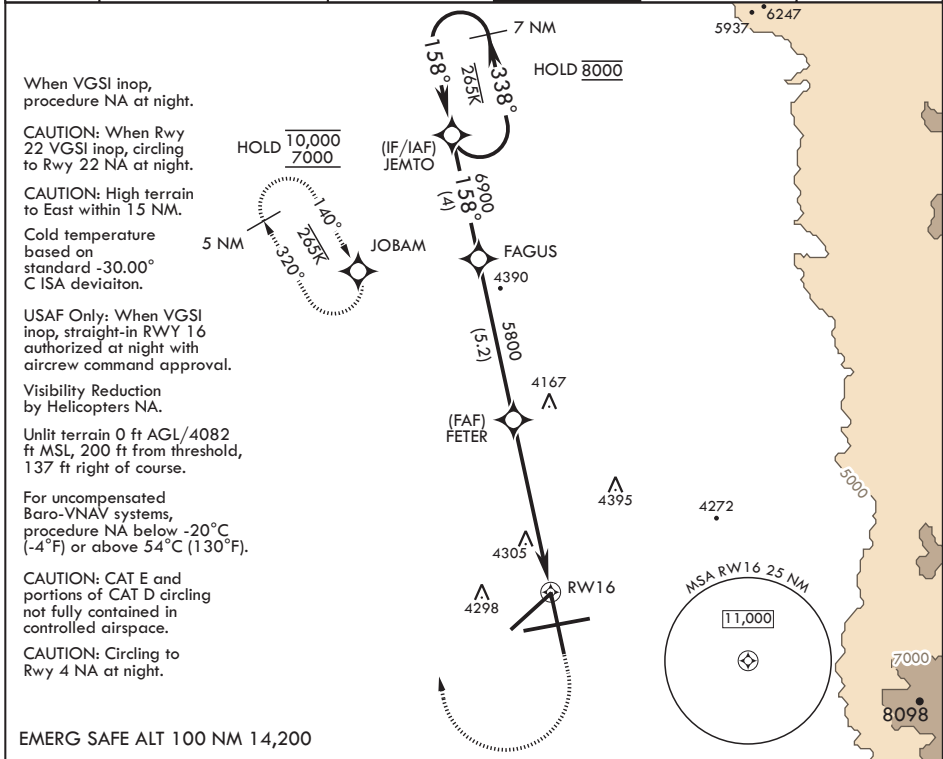
APCH CRS <b>158°</b>	Rwy Idg <b>12,134</b>
	TDZE <b>4083</b>
	Arprt Elev <b>4093</b>

AL-7 (USAF)

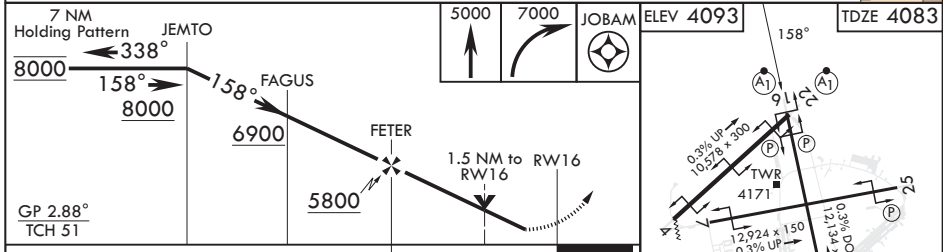
HOLLOMAN AFB (KHMN)

RNP APCH-GPS	ALSF-1	MISSED APPROACH: Climb straight ahead to 7000, passing 5000 turn direct JOBAM, do not exceed 265 KIAS until turn completion and hold.
<p>* When ALS inop, increase vis to 1 3/8 miles.                  ** When ALS inop, increase CAT AB vis to 1 mile; CAT CDE vis to 1 3/8 miles.</p>		

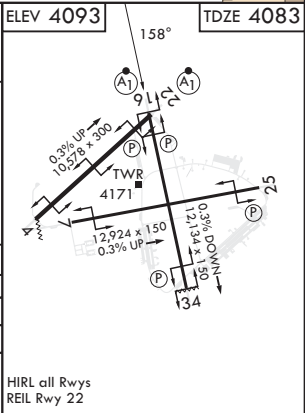
ATIS★ <b>273.5</b>	ALBUQUERQUE CENTER <b>132.65 257.6</b>	APP CON <b>120.6 269.225</b>	TOWER★ <b>119.3 254.4</b>	GND CON <b>127.05 275.8</b>	CLNC DEL <b>126.7 289.4</b>
-----------------------	---	---------------------------------	------------------------------	--------------------------------	--------------------------------



EMERG SAFE ALT 100 NM 14,200



CATEGORY	A	B	C	D	E
RNAV/VNAV DA*	4569-1		486	(500-1)	
RNAV MDA**	4600-3/4 517 (600-3/4)		4600-1	517	(600-1)
<b>C</b> CIRCLING	4640-1 547 (600-1)		4680-1 1/2 587 (600-1 1/2)	4740-2 647 (700-2)	4780-2 1/2 687 (700-2 1/2)



ALAMOGORDO, NEW MEXICO

32°52'N - 106°06'W

HOLLOMAN AFB (KHMN)

Amdt 2 05OCT23

# RNAV (GPS) RWY 16

SW-1, 28 NOV 2024 to 26 DEC 2024

SW-1, 28 NOV 2024 to 26 DEC 2024