

APCH CRS 338°	Rwy Idg 12,134
	TDZE 4058
	Arpt Elev 4093

AL-7 (USAF)

HOLLOMAN AFB (KHMN)

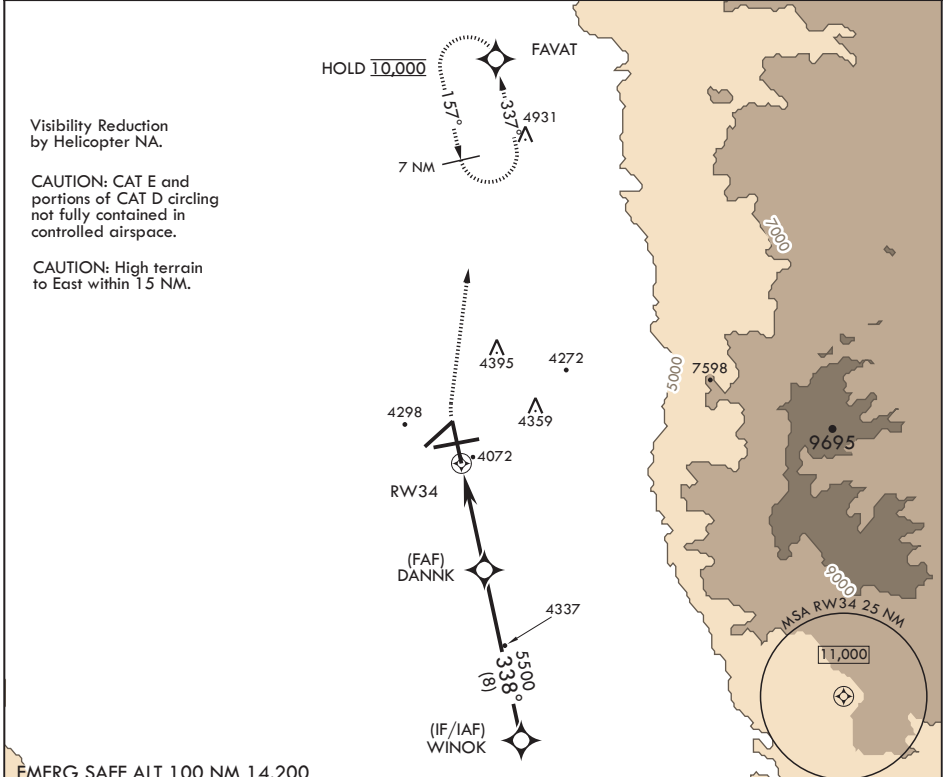
RNP APCH. DME/DME RNP-0.3 NA.

MISSED APPROACH: Climb to 4800 then climbing right turn to 10,000 direct FAVAT and hold, continue climb-in-hold to 10,000.

GPS required

▼ * When circling to Rwy 25 at night, operational VGSI required, remain on or above VGSI glidepath until threshold.

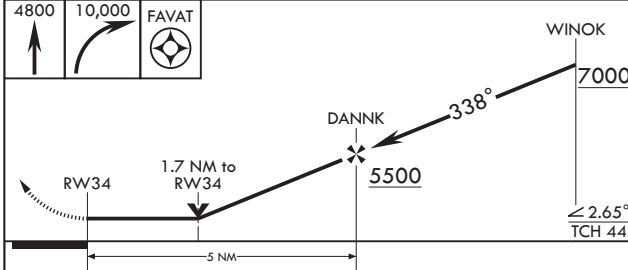
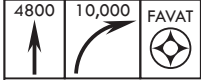
ATIS★ 273.5	ALBUQUERQUE CENTER 132.65 257.6	APP CON 120.6 269.225	TOWER★ 119.3 254.4	GND CON 127.05 275.8	CLNC DEL 126.7 289.4
-----------------------	---	---------------------------------	------------------------------	--------------------------------	--------------------------------



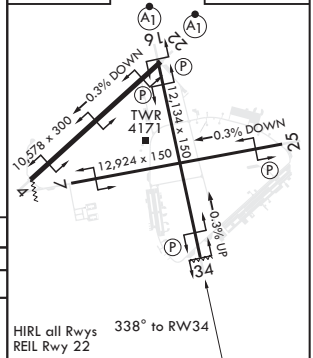
SW-1, 28 NOV 2024 to 26 DEC 2024

SW-1, 28 NOV 2024 to 26 DEC 2024

EMERG SAFE ALT 100 NM 14,200



ELEV 4093 TDZE 4058



CATEGORY	A	B	C	D	E
LNVA MDA	4540-1	482 (500-1)	4540-1½	482 (500-1½)	4780-2½
CIRCLING*	4640-1	547 (600-1)	4680-1½ 587 (600-1½)	4740-2 647 (700-2)	4780-2½ 687 (700-2½)

HIRL all Rwys
REIL Rwy 22