

(JEMEZ3.JEMEZ) 21336

# JEMEZ THREE DEPARTURE (RNAV) AL-12 (FAA)

ALBUQUERQUE INTL SUNPORT (ABQ)  
ALBUQUERQUE, NEW MEXICO

D-ATIS  
118.0 257.7  
CLNC DEL  
119.2 259.3  
CPDLC  
GND CON  
121.9 348.6  
ALBUQUERQUE TOWER  
120.3 351.9  
ALBUQUERQUE DEP CON  
127.4 253.5

**TOP ALTITUDE:  
FL200**

### TAKEOFF MINIMUMS

Rwy 3: Standard with minimum climb of  
500' per NM to 11400.

Rwy 8: Standard with minimum climb of  
500' per NM to 11300.

NOTE: Do not exceed 250K until passing GRREN.

NOTE: Takeoff Rwy 8, do not exceed 230K until  
passing TYILR.

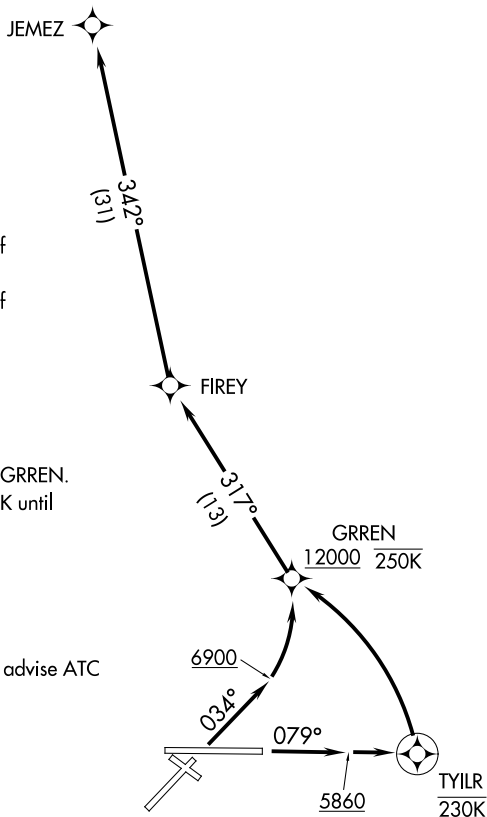
NOTE: DME/DME/IRU or GPS required.

NOTE: For turbojet aircraft only.

NOTE: RNAV 1.

NOTE: RADAR required.

NOTE: If unable to accept climb gradient, advise ATC  
on initial contact.



NOTE: Chart not to scale.



### DEPARTURE ROUTE DESCRIPTION

TAKEOFF RUNWAY 3: Climb heading 034° to 6900, then left turn direct GRREN, cross GRREN at or above 12000, then on depicted route to JEMEZ, thence . . . .

TAKEOFF RUNWAY 8: Climb heading 079° to 5860 and direct TYILR, then left turn direct GRREN, cross GRREN at or above 12000, then on depicted route to JEMEZ, thence . . . .

. . . . Maintain FL200, expect filed altitude ten minutes after departure.

**JEMEZ THREE DEPARTURE (RNAV)**  
(JEMEZ3.JEMEZ) 25JUN15

ALBUQUERQUE, NEW MEXICO  
ALBUQUERQUE INTL SUNPORT (ABQ)

SW-1, 28 NOV 2024 to 26 DEC 2024

SW-1, 28 NOV 2024 to 26 DEC 2024