

MIERA TWO ARRIVAL

AL-12 (FAA)

ALBUQUERQUE, NEW MEXICO

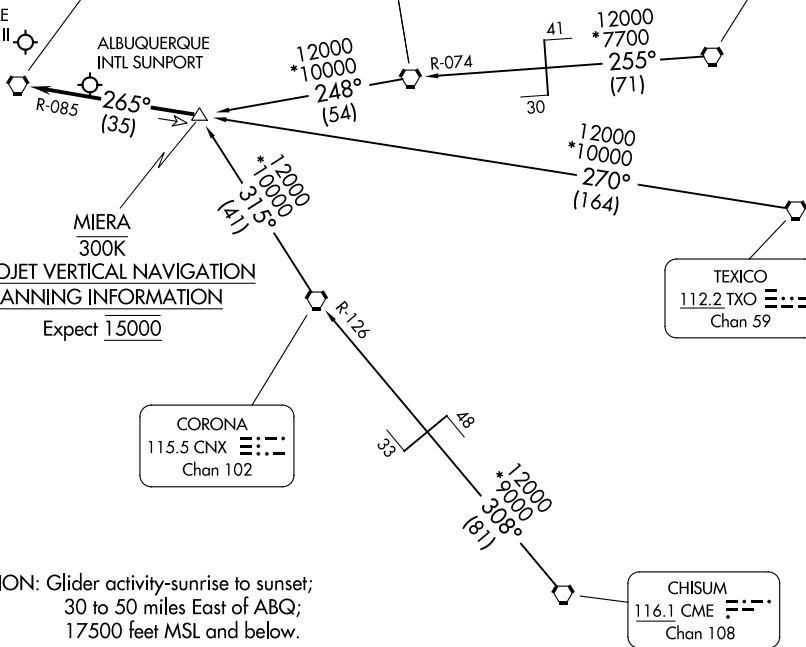
ALBUQUERQUE APP CON
 123.9 354.1
 ABQ D-ATIS
 118.0 257.7
 AEG ATIS
 119.025

ALBUQUERQUE
 113.2 ABQ Chan 79

ANTON CHICO
 117.8 ACH Chan 125

TUCUMCARI
 113.6 TCC Chan 83

DOUBLE EAGLE II



CAUTION: Glider activity-sunrise to sunset;
 30 to 50 miles East of ABQ;
 17500 feet MSL and below.

NOTE: Chart not to scale.

ARRIVAL ROUTE DESCRIPTION

CHISUM TRANSITION (CME.MIERA2): From over CME VORTAC via CME R-308 and CNX R-126 to CNX VORTAC, then via CNX R-315 to MIERA DME fix. Thence. . .

TEXICO TRANSITION (TXO.MIERA2): From over TXO VORTAC via TXO R-270 and ABQ R-085 to MIERA DME fix. Thence. . .

TUCUMCARI TRANSITION (TCC.MIERA2): From over TCC VORTAC via TCC R-255 and ACH R-074 to ACH VORTAC, then via ACH R-248 to MIERA DME fix. Thence. . .

. . . From over MIERA DME fix via ABQ R-085 to ABQ VORTAC. Expect vectors to final approach course after passing MIERA DME fix.