

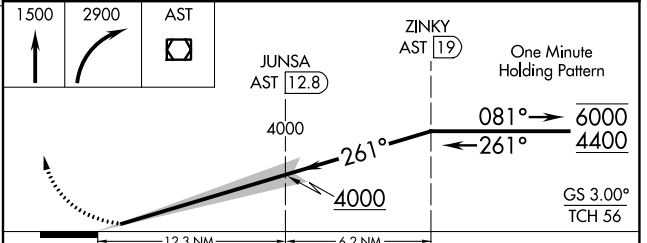
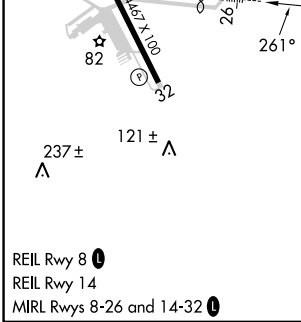
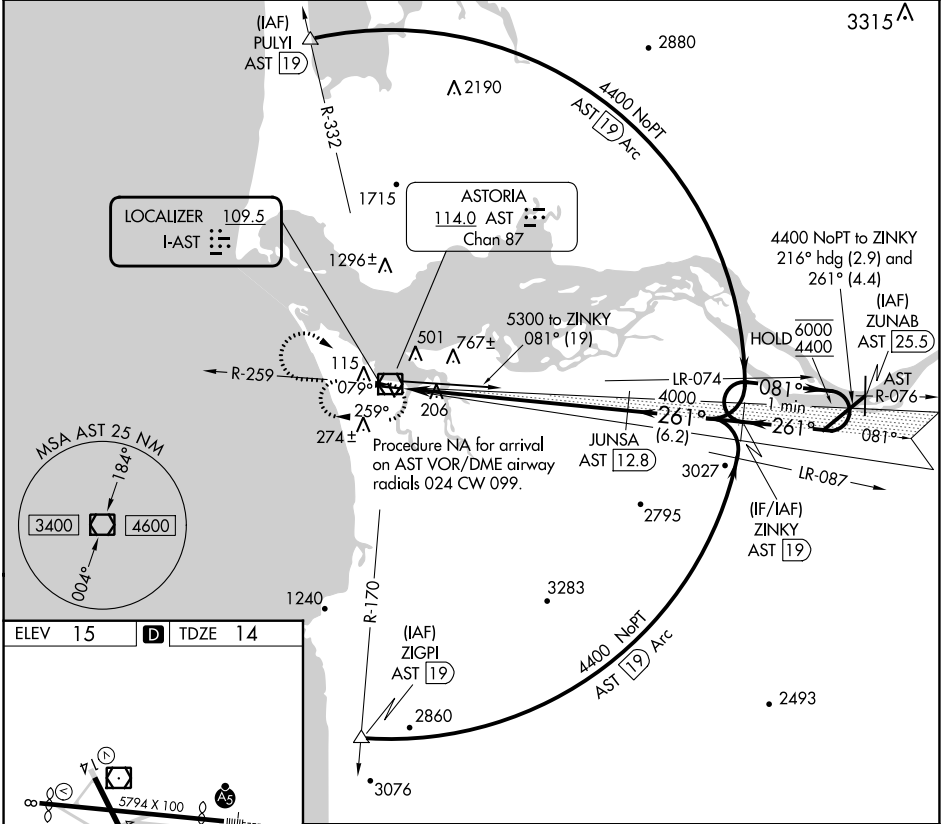
LOC I-AST <b>109.5</b>	APP CRS <b>261°</b>	Rwy Idg TDZE Apt Elev	<b>4780</b> <b>14</b> <b>15</b>
---------------------------	------------------------	-----------------------------	---------------------------------------

# ILS RWY 26

ASTORIA RGNL (AST)

DME required for procedure entry.		MALSR 	MISSED APPROACH: Climb to 1500 then climbing right turn to 2900 direct AST VOR/DME and hold.
 Rwy 26 helicopter visibility reduction below 3/4 SM NA. Inoperative table does not apply.			

ASOS <b>135.375</b>	SEATTLE CENTER <b>124.2 317.6</b>	UNICOM <b>122.8 (CTAF) 0</b>
------------------------	--------------------------------------	---------------------------------



CATEGORY	A	B	C	D
S-ILS 26	264-1 250 (300-1)			

NW-1, 28 NOV 2024 to 26 DEC 2024

NW-1, 28 NOV 2024 to 26 DEC 2024