

HAALO THREE DEPARTURE (RNAV) AL-26 (FAA)

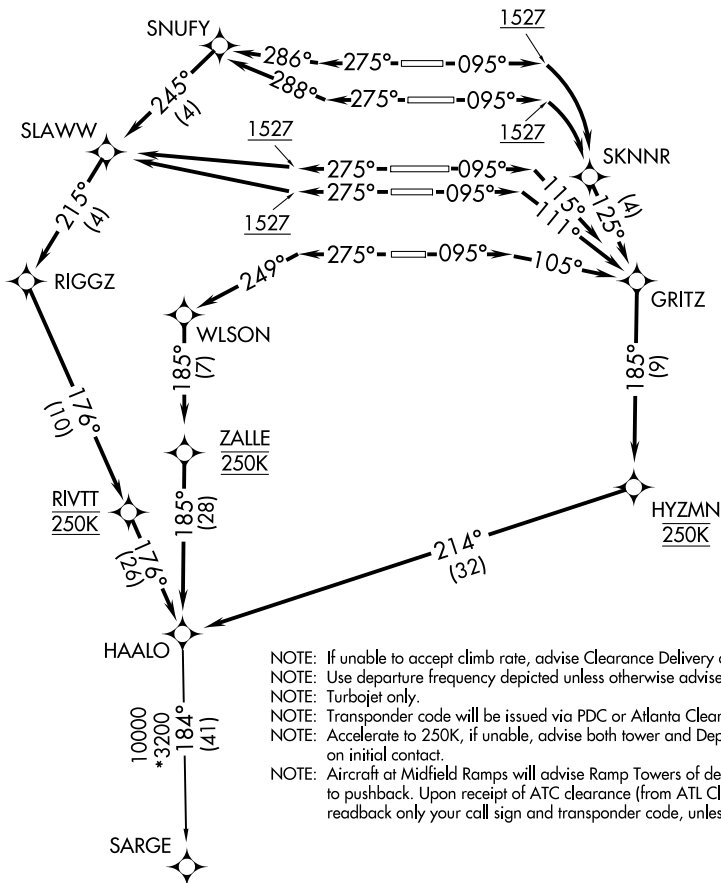
D-ATIS 125.55
CLNC DEL 118.1
CPDLC
GND CON

RNAV 1 - DME/DME/IRU or GPS.
RADAR required for non-GPS equipped aircraft.

**TOP ALTITUDE:
10000**

121.9 254.4 (Rwys 8L-26R, 8R-26L)
121.75 254.4 (Rwys 9L-27R, 9R-27L)
121.65 254.4 (Rwy 10-28)
ATLANTA TOWER
119.1 254.4 (Rwy 8L-26R)
125.325 254.4 (Rwy 8R-26L)
119.3 254.4 (Rwy 9R-27L)
123.85 254.4 (Rwy 9L-27R)
119.5 254.4 (Rwy 10-28)
ATLANTA DEP CON
133.475 281.425 (Rwys 8L-26R, 8R-26L)
125.65 281.425 (Rwys 9L-27R, 9R-27L)
121.225 281.425 (Rwy 10-28)

TAKEOFF MINIMUMS
Rwys 8L/R, 9L/R, 10, 26L/R, 27L/R, 28:
Standard with minimum climb of 500'
per NM to 1527.



SE-4, 28 NOV 2024 to 26 DEC 2024

SE-4, 28 NOV 2024 to 26 DEC 2024

(CONTINUED ON FOLLOWING PAGE)

NOTE: Chart not to scale.