

ATLANTA, GEORGIA

AL-26 (FAA)

24305

LOC/DME I-FSQ <b>108.5</b> Chan 22	APP CRS <b>275°</b>	Rwy Idg TDZE Apt Elev	<b>8865</b> <b>999</b> <b>1026</b>
--	------------------------	-----------------------------	--

# ILS RWY 27L (CAT II)

HARTSFIELD/JACKSON ATLANTA INTL (ATL)

DME or RADAR required.  
RADAR required for procedure entry.

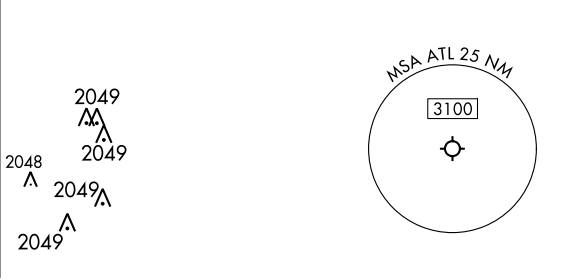
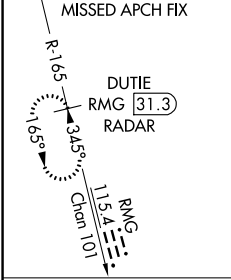
Simultaneous approach authorized.

ALSF-2



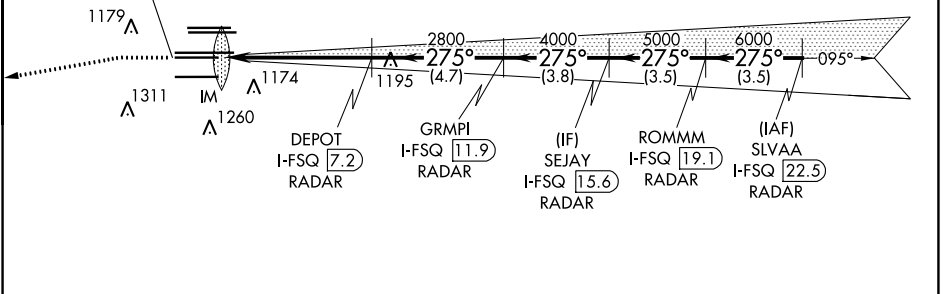
MISSED APPROACH: Climb to 1500 then climbing left turn to 4000 on heading 265° and RMG VORTAC R-165 to DUTIE/RMG 31.3 DME/RADAR and hold.

D-ATIS ARR <b>119.65</b>	ATLANTA APP CON DEP <b>125.55</b>	ATLANTA TOWER 8L-26R 8R-26L 9L-27R 9R-27L 10-28 RWYS <b>119.1 125.325 123.85 119.3 119.5 254.4</b>	ALL RWYS <b>121.9</b>	GND CON (8L-26R,8R-26L) (9L-27R,9R-27L) 10-28 RWYS <b>121.75 121.65 254.4</b>	ALL RWYS
-----------------------------	---	--	-----------------------------	---	-------------

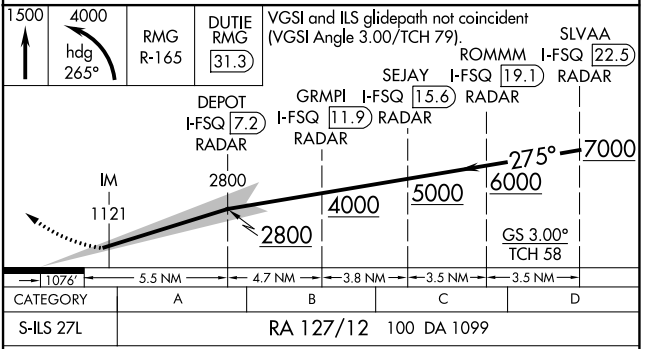
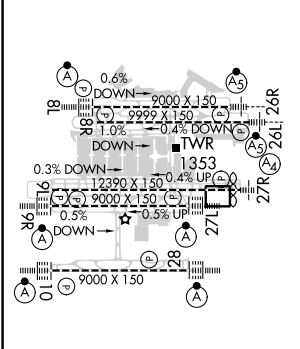


CINC DEL <b>118.1</b>	CPDLC
-----------------------------	-------

LOCALIZER <b>108.5</b> I-FSQ Chan 22
--



ELEV 1026	<b>D</b>	TDZE 999
-----------	----------	----------



CATEGORY II ILS- SPECIAL AIRCREW & AIRCRAFT CERTIFICATION REQUIRED

ATLANTA, GEORGIA  
Amdt 19 22APR21

HARTSFIELD/JACKSON ATLANTA INTL (ATL)  
33°38'N-84°26'W

# ILS RWY 27L (CAT II)

SE-4, 28 NOV 2024 to 26 DEC 2024

SE-4, 28 NOV 2024 to 26 DEC 2024