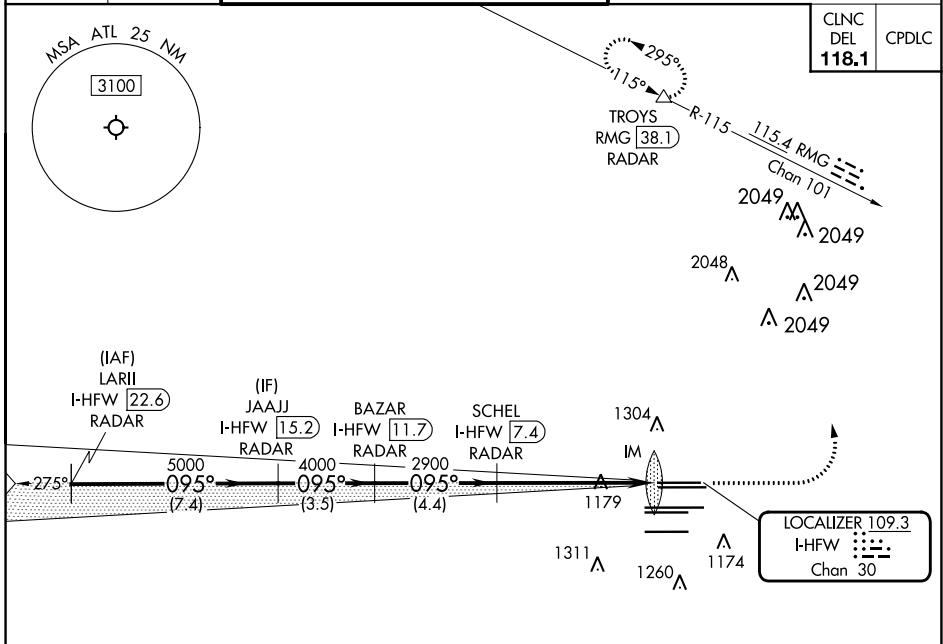


LOC/DME I-HFW <b>109.3</b> Chan <b>30</b>	APP CRS <b>095°</b>	Rwy Idg <b>8800</b> TDZE <b>1015</b> Apt Elev <b>1026</b>
---	------------------------	---

# ILS RWY 8L (SA CAT I)

HARTSFIELD/JACKSON ATLANTA INTL (ATL)

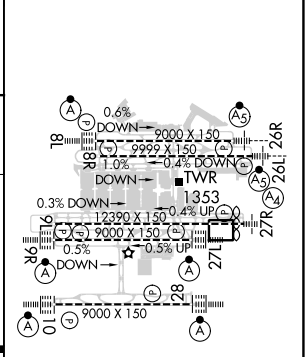
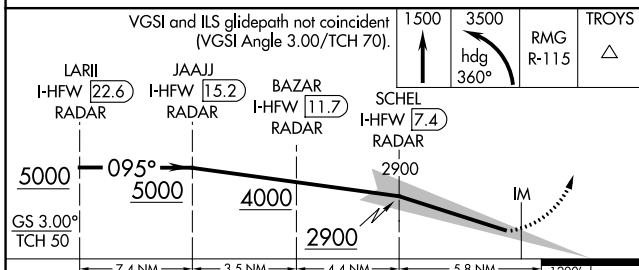
RADAR required for procedure entry. DME or RADAR required.		ALSIF-2	MISSED APPROACH: Climb to 1500 then climbing left turn to 3500 on heading 360° and RMG VORTAC R-115 to TROYS/RMG 38.1 DME/RADAR and hold.		
Simultaneous approach authorized. Requires specific OPSPEC, MSPEC, or LOA approval.					
D-ATIS ARR <b>119.65</b> DEP <b>125.55</b>	ATLANTA APP CON <b>127.9 379.9</b>	ATLANTA TOWER 8L-26R 8R-26L 9L-27R 9R-27L 10-28 RWYS			ALL RWYS <b>254.4</b>
		GND CON <b>121.9</b>	9L-27R, 9R-27L <b>121.75</b>		10-28 <b>121.65</b>
				ALL RWYS <b>254.4</b>	



SE-4, 28 NOV 2024 to 26 DEC 2024

SE-4, 28 NOV 2024 to 26 DEC 2024

ELEV 1026	<b>D</b>	TDZE 1015
-----------	----------	-----------



CATEGORY	A	B	C	D
S-ILS 8L	RA 147/14 150 DA 1165			

**SA CATEGORY I ILS - SPECIAL AIRCREW & AIRCRAFT CERTIFICATION REQUIRED**

HIRL all Rwws  
TDZ/CL Rwws 8L, 9R, 10, 26R, 27L and 28