

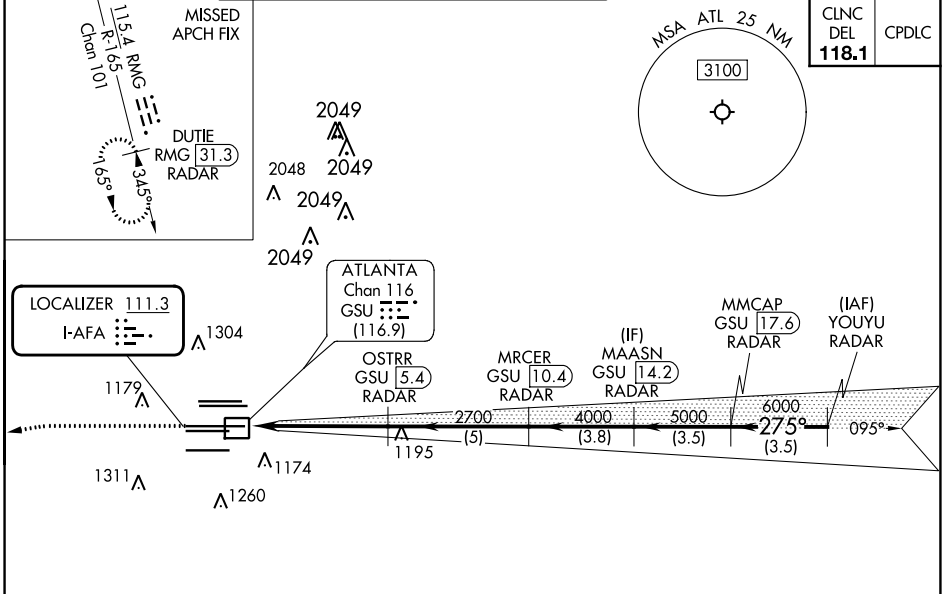
LOC I-AFA 111.3	APP CRS 275°	Rwy Idg 27R	27L 11890 8865
		TDZE 985 999	
		Apt Elev 1026 1026	

ILS or LOC RWY 27R

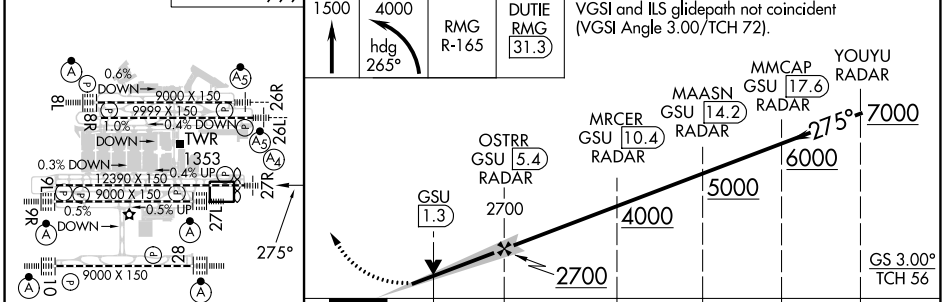
HARTSFIELD/JACKSON ATLANTA INTL (ATL)

DME and RADAR required.		Rwy 27R MALS	Rwy 27L ALSF-2	MISSED APPROACH: Climb to 1500 then climbing left turn to 4000 on heading 265° and RMG VORTAC R-165 to DUTIE/RMG 31.3 DME/RADAR and hold.
<p>Simultaneous approach authorized. Inop table does not apply to S-ILS 27R all Cats. DME from GSU DME. DME use requires simultaneous reception of I-AFA and GSU DME.</p>		(A)	(A)	

D-ATIS ARR 119.65	ATLANTA APP CON	ATLANTA TOWER				ALL RWYS	GND CON	ALL RWYS
DEP 125.55	127.9 379.9	8L-26R	8R-26L	9L-27R	9R-27L	10-28	(8L-26R,8R-26L) (9L-27R,9R-27L)	10-28
		119.1	125.325	123.85	119.3	119.5	254.4	121.9
								121.75
								121.65
								254.4



ELEV 1026	D	TDZE 27R 985	TDZE 27L 999
-----------	---	--------------	--------------



Category	A	B	C	D
S-ILS 27R	1185/40		200 (200-¾)	
S-LOC 27R	1420/40	435 (400-¾)	1420/50	435 (400-1)
SIDESTEP 27L	1420/55 421 (400-1)			1420-1½ 421 (400-1½)

SE-4, 28 NOV 2024 to 26 DEC 2024

SE-4, 28 NOV 2024 to 26 DEC 2024