

RNAV (GPS) PRM RWY 27L (SIMULTANEOUS CLOSE PARALLEL) HARTSFIELD/JACKSON ATLANTA INTL (ATL)

| | | |
|--|------------------------|--|
| WAAS CH 65700 W27A | APP CRS 275° | Rwy Idg 8865 TDZE 999 Apt Elev 1026 |
|--|------------------------|--|

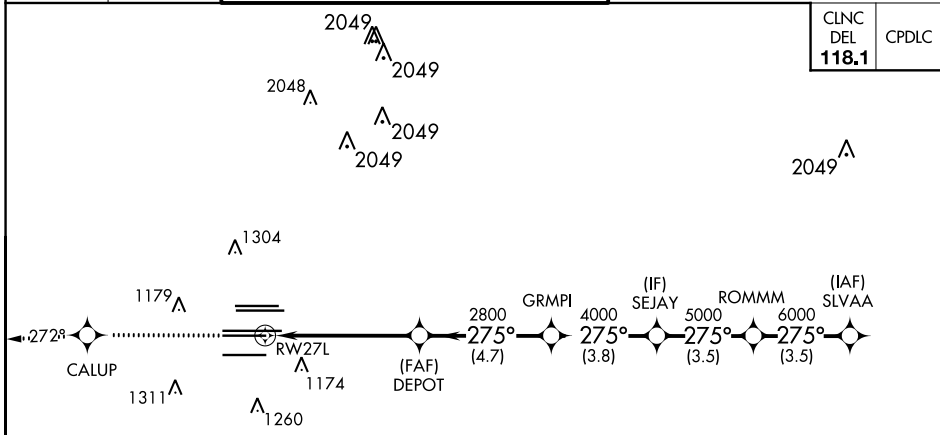
⚠ For uncompensated Baro-VNAV systems, LNAV/VNAV NA below -7°C (20°F) or above 54°C (130°F). DME/DME RNP-0.3 NA. Simultaneous close parallel approach authorized with ILS PRM and RNAV PRM Rwy 26R or 26L or 28, or Rwys 26R and 28, or Rwys 26L and 28. Dual VHF Comm required. Use of FD or AP providing RNAV track guidance required during simultaneous operations. See additional requirements on AAUP.

ALSF-2

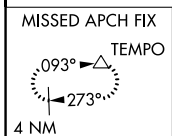


MISSED APPROACH: Climb to 4000 direct CALUP and on track 272° to TEMPO and hold.

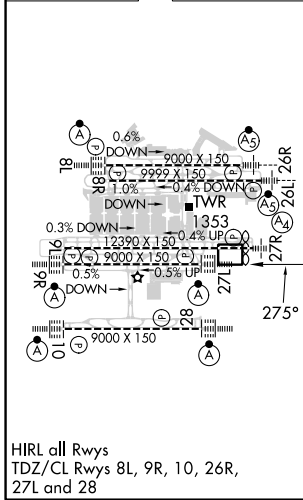
| | | | |
|--|--|---|--|
| D-ATIS ARR 119.65 DEP 125.55 | ATLANTA APP CON 127.9 379.9 | ATLANTA TOWER 8L-26R 8R-26L 9L-27R 9R-27L 10-28 RWYS 119.1 125.325 123.85 119.3 119.5 254.4 PRM 132.55 | ALL RWYS (8L-26R, 8R-26L) (9L-27R, 9R-27L) 10-28 121.9 121.75 121.65 254.4 |
|--|--|---|--|



| | |
|-----------------------------|-------|
| CINC DEL 118.1 | CPDLC |
|-----------------------------|-------|



| | | |
|-----------|----------|----------|
| ELEV 1026 | D | TDZE 999 |
|-----------|----------|----------|



RADAR REQUIRED

MSA RW27L 25 NM 3100

4000 CALUP tr 272° TEMPO VGSI and RNAV glidepath not coincident (VGSI Angle 3.00/TCH 79).

SLVAA 7000

DEPOT 2800 GRMPI 4000 SEJAY 5000 ROMMM 6000

RW27L 2800

GP 3.00° TCH 58

5.5 NM 4.7 NM 3.8 NM 3.5 NM 3.5 NM

| | | | | |
|--------------|---|---------|--------------|---|
| CATEGORY | A | B | C | D |
| LPV DA | | 1199/18 | 200 (200-½) | |
| LNAV/VNAV DA | | 1528-1⅓ | 529 (600-1⅓) | |

RNAV (GPS) PRM RWY 27L (SIMULTANEOUS CLOSE PARALLEL)

SE-4, 28 NOV 2024 to 26 DEC 2024

SE-4, 28 NOV 2024 to 26 DEC 2024