

|             |          |             |
|-------------|----------|-------------|
| APP CRS     | Rwy Idg  | <b>9000</b> |
| <b>095°</b> | TDZE     | <b>1000</b> |
|             | Apt Elev | <b>1026</b> |

# RNAV (RNP) Z RWY 10

HARTSFIELD/JACKSON ATLANTA INTL (ATL)

**▽** For uncompensated Baro-VNAV systems, procedure NA below -8°C (18°F) or above 54°C (130°F). GPS required. Simultaneous approach authorized; arrival from ROBNS NA. For inop ALS, increase RNP 0.11 DA all Cats visibility to RVR 4500.

ALSF-2

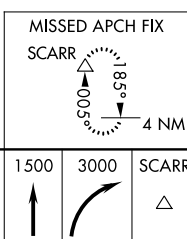
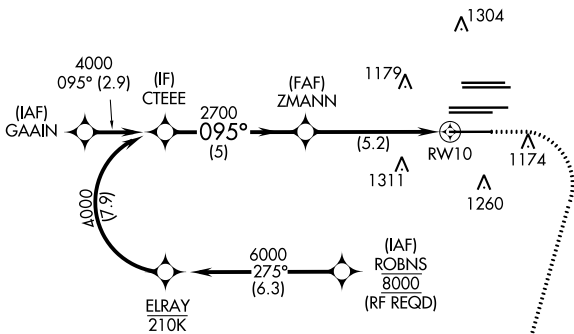


MISSED APPROACH: Climb to 1500 then climbing right turn to 3000 direct SCARR and hold.

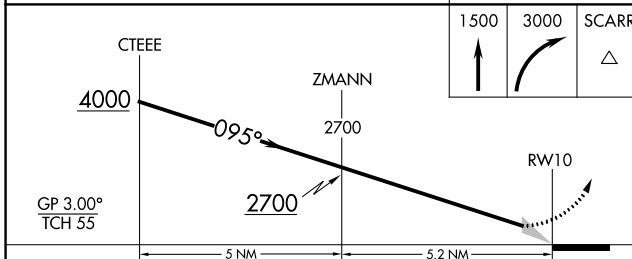
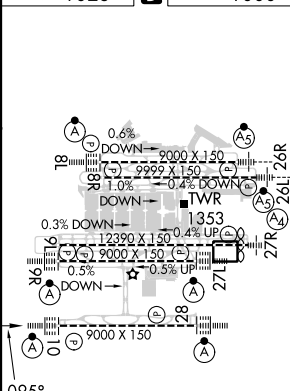
|                   |                    |               |                |               |              |              |              |                                 |               |
|-------------------|--------------------|---------------|----------------|---------------|--------------|--------------|--------------|---------------------------------|---------------|
| D-ATIS            | ATLANTA            | ATLANTA TOWER |                |               |              |              | ALL          | GND CON                         | ALL           |
| ARR <b>119.65</b> | APP CON            | 8L-26R        | 8R-26L         | 9L-27R        | 9R-27L       | 10-28        | RWYS         | (8L-26R,8R-26L) (9L-27R,9R-27L) | 10-28         |
| DEP <b>125.55</b> | <b>127.9 379.9</b> | <b>119.1</b>  | <b>125.325</b> | <b>123.85</b> | <b>119.3</b> | <b>119.5</b> | <b>254.4</b> | <b>121.9</b>                    | <b>121.75</b> |
|                   |                    |               |                |               |              |              |              | <b>121.65</b>                   | <b>254.4</b>  |

|              |       |
|--------------|-------|
| CLNC DEL     | CPDLC |
| <b>118.1</b> |       |

2049  $\Delta$   
2049  $\Delta$



ELEV 1026 **D** TDZE 1000



|             |   |         |               |   |
|-------------|---|---------|---------------|---|
| GP 3.00°    |   |         |               |   |
| TCH 55      |   |         |               |   |
| CATEGORY    | A | B       | C             | D |
| RNP 0.11 DA |   | 1290/24 | 290 (300-1/2) |   |
| RNP 0.30 DA |   | 1456/50 | 456 (500-1)   |   |

## AUTHORIZATION REQUIRED

HIRL all Rwy's  
TDZ/CL Rwy's 8L, 9R,  
10, 26R, 27L and 28

SE-4, 28 NOV 2024 to 26 DEC 2024

SE-4, 28 NOV 2024 to 26 DEC 2024