

RNAV (RNP) Z RWY 8L HARTSFIELD/JACKSON ATLANTA INTL (ATL)

APP CRS	Rwy Idg	8800
095°	TDZE	1015
	Apt Elev	1026

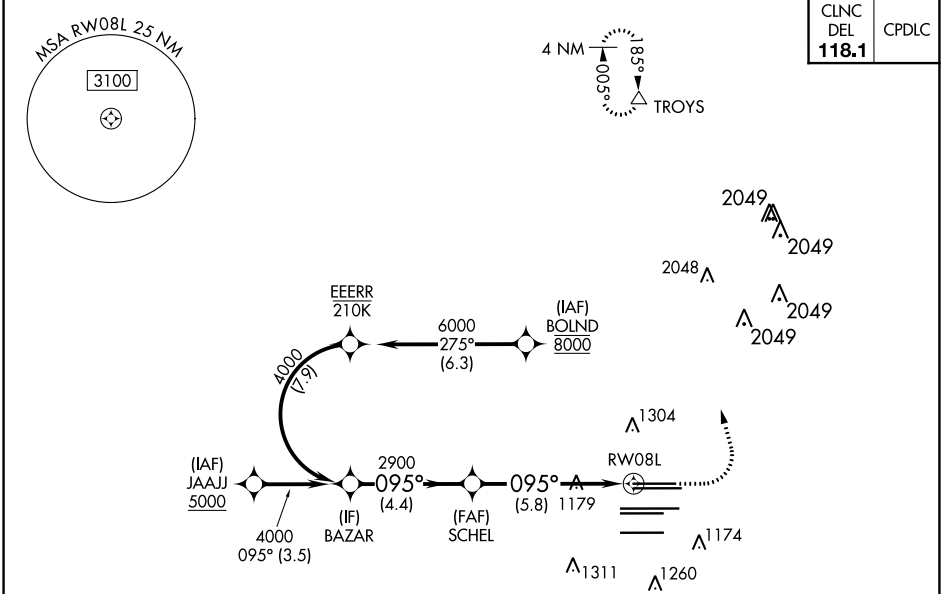
RNP AR APCH - GPS.

▼ For uncompensated Baro-VNAV systems, procedure NA below -5°C or above 54°C. For inop ALS, increase RNP 0.15 all Cats RVR to 5500. Simultaneous approach authorized. Arrival from BOLND NA during simultaneous triple approaches.

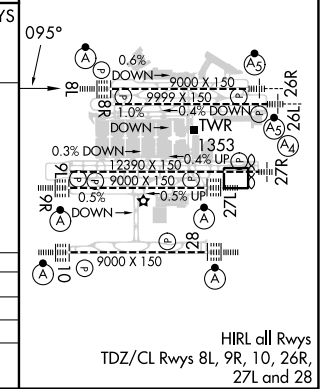
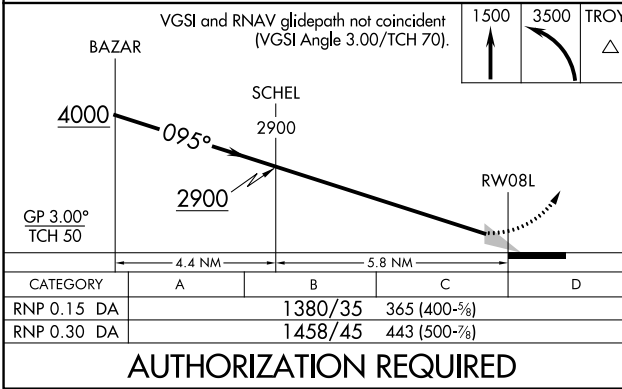
ALSF-2

MISSED APPROACH: Climb to 1500 then dimbing left turn to 3500 direct TROYS and hold.

D-ATIS	ATLANTA APP CON	ATLANTA TOWER					ALL RWYS	GND CON	ALL RWYS
ARR 119.65		8L-26R	8R-26L	9L-27R	9R-27L	10-28	(8L-26R,8R-26L)	(9L-27R,9R-27L)	10-28
DEP 125.55	127.9 379.9	119.1	125.325	123.85	119.3	119.5	254.4	121.9	121.75
								121.65	254.4



ELEV 1026	TDZE 1015
-----------	-----------



ATLANTA, GEORGIA

Amdt 1A 23FEB23

HARTSFIELD/JACKSON ATLANTA INTL (ATL)

33°38'N-84°26'W

RNAV (RNP) Z RWY 8L

SE-4, 28 NOV 2024 to 26 DEC 2024

SE-4, 28 NOV 2024 to 26 DEC 2024

AUTHORIZATION REQUIRED

HIRL all Rwys
TDZ/CL Rwys 8L, 9R, 10, 26R,
27L and 28