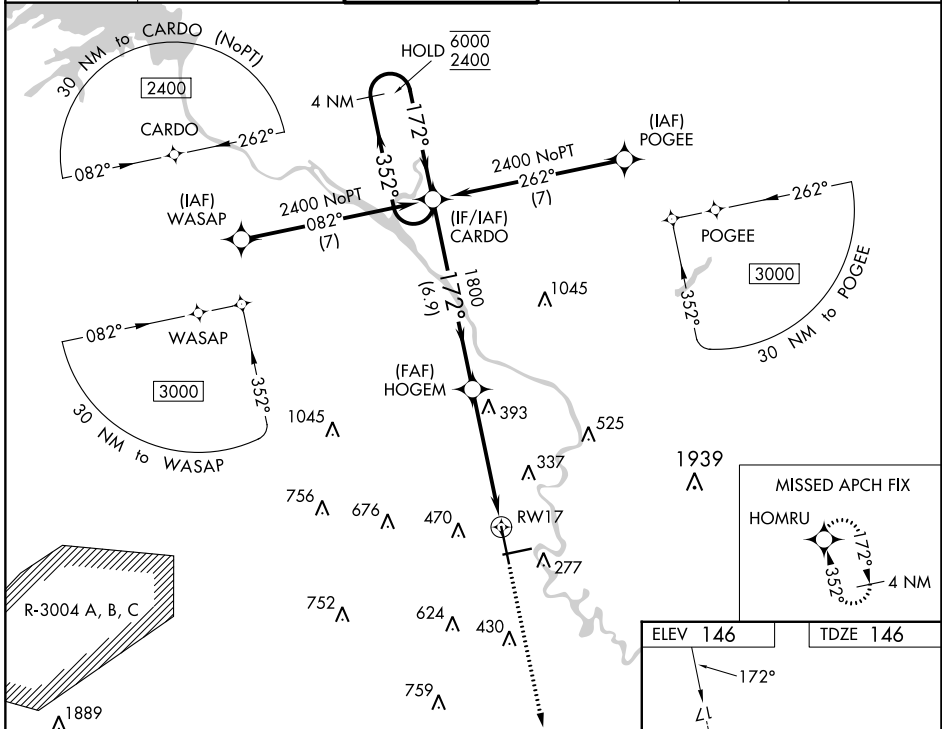


WAAS CH 77504 W17A	APP CRS 172°	Rwy Idg TDZE 146 Apt Elev 146	8001
--	------------------------	---	-------------

RNAV (GPS) RWY 17

AUGUSTA RGNL AT BUSH FLD (AGS)

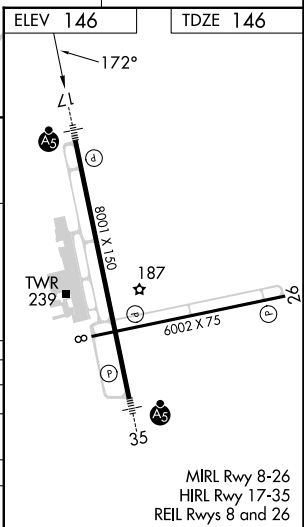
RNP APCH - GPS.				MALSR MISSED APPROACH: Climb to 2100 direct HOMRU and hold.			
⚠ For uncompensated Baro-VNAV systems, LNAV/VNAV NA below -6°C or above 54°C. ⚠ For inop ALS, increase LNAV/VNAV all Cats visibility to RVR 4500.	ATIS 132.75		AUGUSTA APP CON ★ 126.8 270.3	AUGUSTA TOWER ★ 118.7 (CTAF) 0 239.3	GND CON 121.9 348.6	CLNC DEL 118.65	UNICOM 122.95



SE-4, 28 NOV 2024 to 26 DEC 2024

SE-4, 28 NOV 2024 to 26 DEC 2024

4 NM Holding Pattern CARDO VGSI and RNAV glidepath not coincident (VGSI Angle 3.00/TCH 71).		2100 	HOMRU 	
6000 ← 352° 2400 ← 172°	HOGEM 1800 GP 3.00° TCH 57 1.5 NM to RW17			
6.9 NM 3.5 NM 1.5 NM				
CATEGORY	A	B	C	D
LPV DA		351/24	205 (300-½)	
LNAV/VNAV DA		460/24	314 (400-½)	
LNAV MDA	700/24	554 (600-½)	700/60	554 (600-1¼)
CIRCLING	780-1	634 (700-1)	780-1¾ 634 (700-1¾)	940-2½ 794 (800-2½)



MIRL Rwy 8-26
HIRL Rwy 17-35
REIL Rwy 8 and 26