

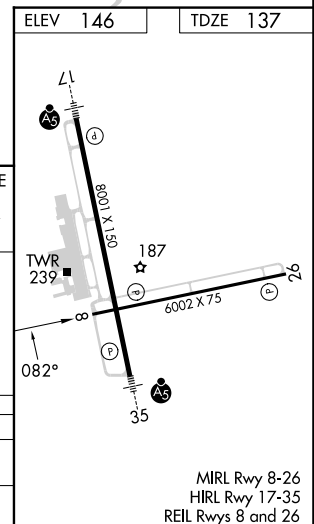
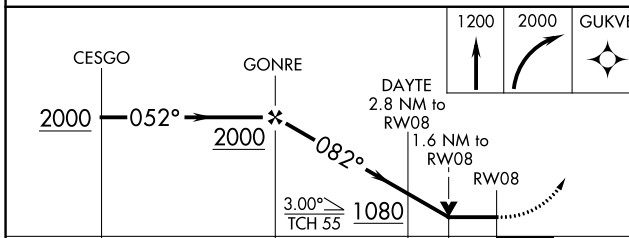
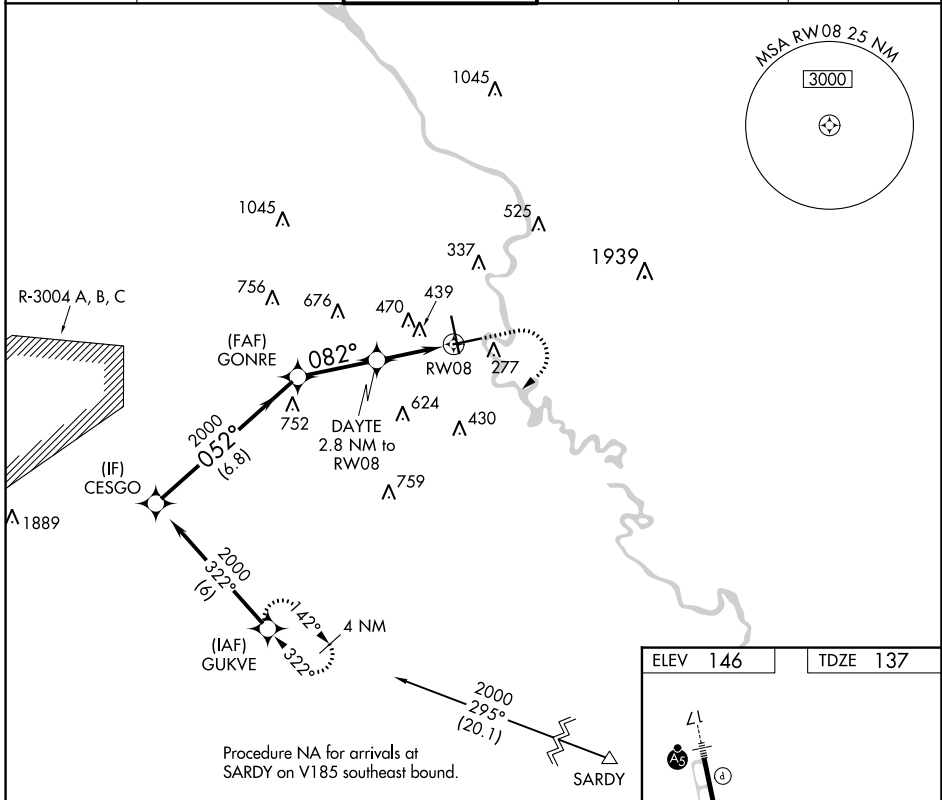
APP CRS	Rwy Idg	<b>6002</b>
<b>082°</b>	TDZE	<b>137</b>
	Apt Elev	<b>146</b>

# RNAV (GPS) Y RWY 8

AUGUSTA RGNL AT BUSH FLD (AGS)

RNP APCH - GPS.				MISSED APPROACH: Climb to 1200 then climbing right turn to 2000 direct GUKVE and hold.			
▼ Rwy 8 helicopter visibility reduction below 3/4 SM NA. VDP NA with Daniel Fld altimeter setting. When local altimeter setting not received, use Daniel Fld altimeter setting and increase all MDAs 60 feet; increase LNAV Cats C and D visibility 1/8 SM and Circling Cats C and D visibility 1/4 SM.							

ATIS	AUGUSTA APP CON *	AUGUSTA TOWER *	GND CON	CLNC DEL	UNICOM
<b>132.75</b>	<b>126.8 270.3</b>	<b>118.7 (CTAF) 0 239.3</b>	<b>121.9 348.6</b>	<b>118.65</b>	<b>122.95</b>



SE-4, 28 NOV 2024 to 26 DEC 2024

SE-4, 28 NOV 2024 to 26 DEC 2024

CATEGORY	A	B	C	D
LNAV MDA	700-1 563 (600-1)		700-1 5/8 563 (600-1 5/8)	
CIRCLING	780-1 634 (700-1)		780-1 3/4 634 (700-1 3/4)	940-2 1/2 794 (800-2 1/2)