

# ILS or LOC RWY 30R

MEADOWS FLD (BFL)

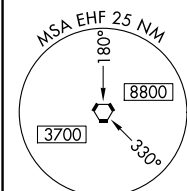
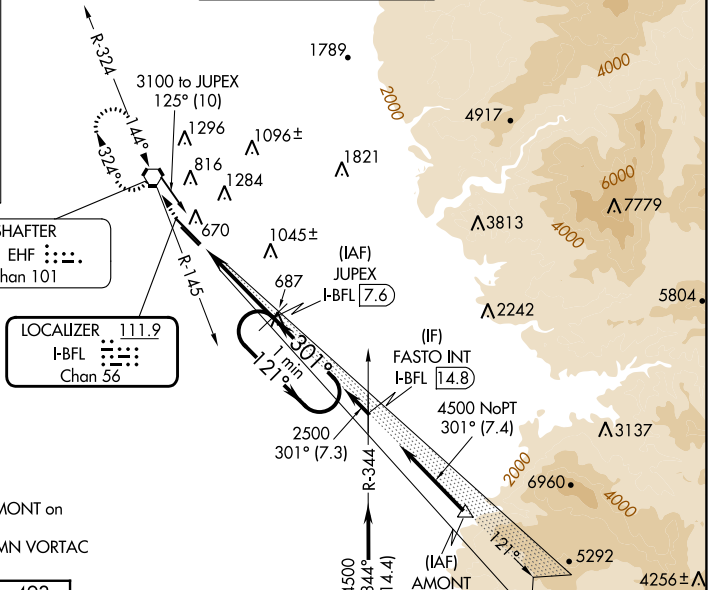
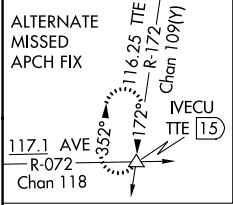
LOC/DME I-BFL <b>111.9</b> Chan 56	APP CRS <b>301°</b>	Rwy Idg <b>7429</b> TDZE <b>493</b> Apt Elev <b>510</b>
--	------------------------	--

**⚠** Circling NA northeast of Rwy 12L-30R. DME Required. VDP NA with Porterville altimeter setting. When local altimeter setting not received, use Porterville altimeter setting: increase DA to 790 and all visibilities to RVR 2200; increase all MDA 100 feet and visibility Cats C and D to RVR 6000. For inop ALS, increase S-LOC 30R Cat A and B visibility to RVR 5000. For inop ALS when using Porterville altimeter setting, increase S-ILS 30R all Cats visibility to RVR 5000.

**MALSR**

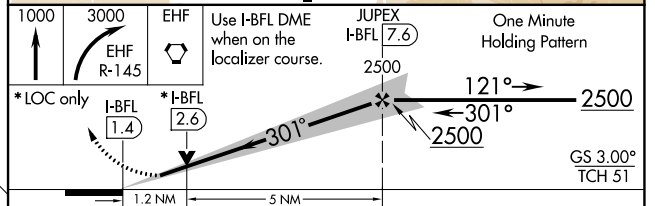
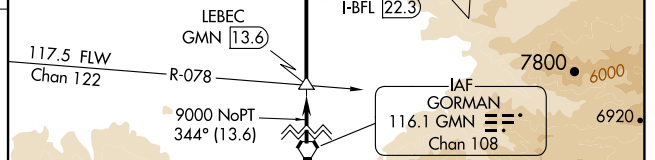
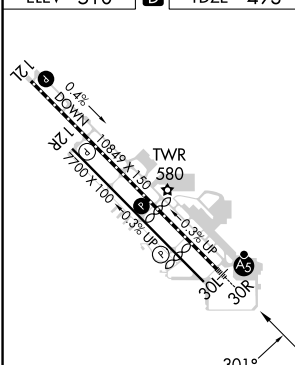
**MISSED APPROACH:** Climb to 1000 then climbing right turn to 3000 on EHF VORTAC R-145 direct EHF VORTAC and hold, continue climb-in-hold to 3000.

ATIS <b>118.6</b>	BAKERSFIELD APP CON* <b>118.8 284.625 118.9 270.3</b> (SOUTH) (NORTH)	BAKERSFIELD TOWER* <b>118.1 (CTAF) 257.8</b>	GND CON <b>121.7</b>	UNICOM <b>122.95</b>
----------------------	---	---	-------------------------	-------------------------



Procedure NA for arrivals at AMONT on V459 southeast bound.  
Procedure NA for arrivals at GMN VORTAC on V137 southeast bound.

ELEV 510	<b>D</b>	TDZE 493
----------	----------	----------



CATEGORY	A	B	C	D
S-ILS 30R	698/18		205 (200-1/2)	
S-LOC 30R	940/24	447 (500-1/2)	940/45	447 (500-7/8)
<b>C</b> CIRCLING	960-1	450 (500-1)	960-1 1/2	1060-2
			450 (500-1 1/2)	550 (600-2)

SW-3, 28 NOV 2024 to 26 DEC 2024

SW-3, 28 NOV 2024 to 26 DEC 2024