

| | | |
|--|------------------------|--|
| WAAS CH 78418 W12A | APP CRS 121° | Rwy Idg 10848 TDZE 510 Apt Elev 510 |
|--|------------------------|--|

RNAV (GPS) RWY 12L

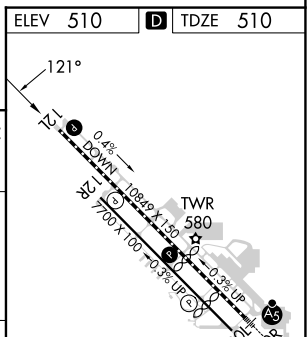
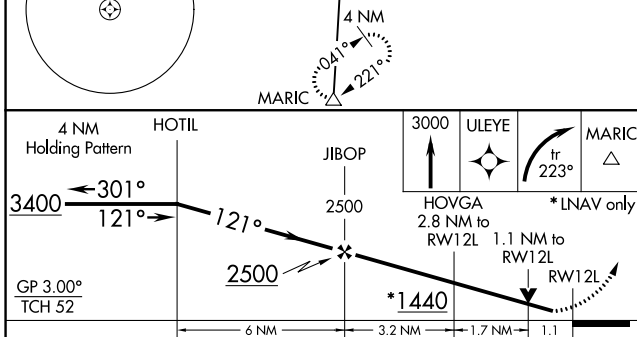
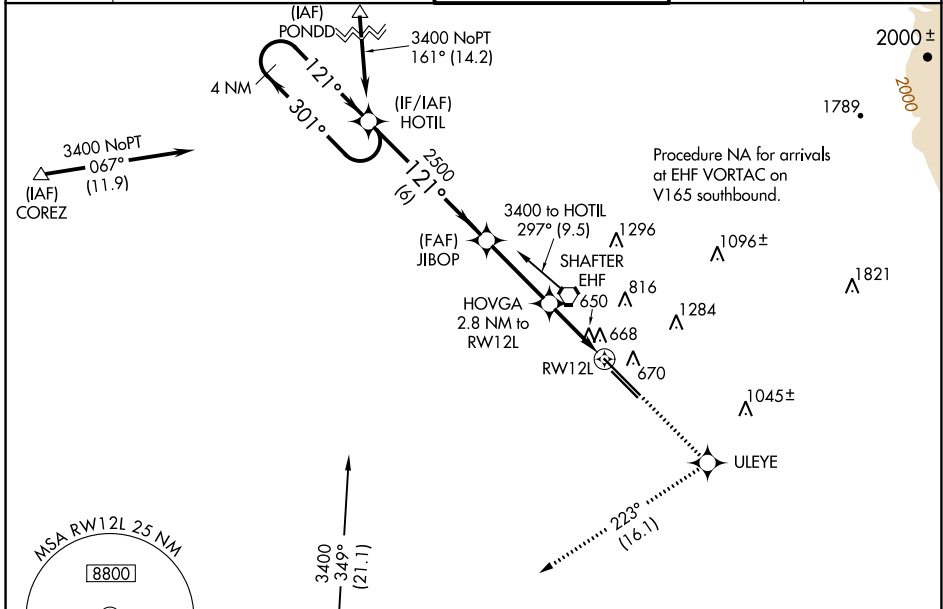
MEADOWS FLD (BFL)

RNP APCH.

Baro-VNAV NA when using Porterville altimeter setting. For uncompensated Baro-VNAV systems, LNAV/VNAV NA below -16°C or above 54°C. Rwy 12L helicopter visibility reduction below ¾ SM NA. When local altimeter setting not received, use Porterville altimeter setting and increase all DA 92 feet, all MDA 100 feet, increase LPV all Cats, LNAV/VNAV all Cats and LNAV Cats C/D visibility ¼ mile.

MISSED APPROACH: Climb to 3000 direct ULEYE and right turn on track 223° to MARIC and hold.

| | | | | |
|----------------------|--|--|-------------------------|-------------------------|
| ATIS 118.6 | BAKERSFIELD APP CON * 118.8 284.625 118.9 270.3 (SOUTH) (NORTH) | BAKERSFIELD TOWER * 118.1 (CTAF) 257.8 | GND CON 121.7 | UNICOM 122.95 |
|----------------------|--|--|-------------------------|-------------------------|



| | | | | |
|--------------|--------------------|---|---------------------|---|
| CATEGORY | A | B | C | D |
| LPV DA | 760-1 250 (300-1) | | | |
| LNAV/VNAV DA | 1073-2 563 (600-2) | | | |
| LNAV MDA | 920-1 410 (500-1) | | 920-1¼ 410 (500-1¼) | |



SW-3, 28 NOV 2024 to 26 DEC 2024

SW-3, 28 NOV 2024 to 26 DEC 2024