

WAAS CH <b>82307</b> <b>W15A</b>	APP CRS <b>150°</b>	Rwy Idg <b>11440</b> TDZE <b>192</b> Apt Elev <b>192</b>
--	------------------------	--

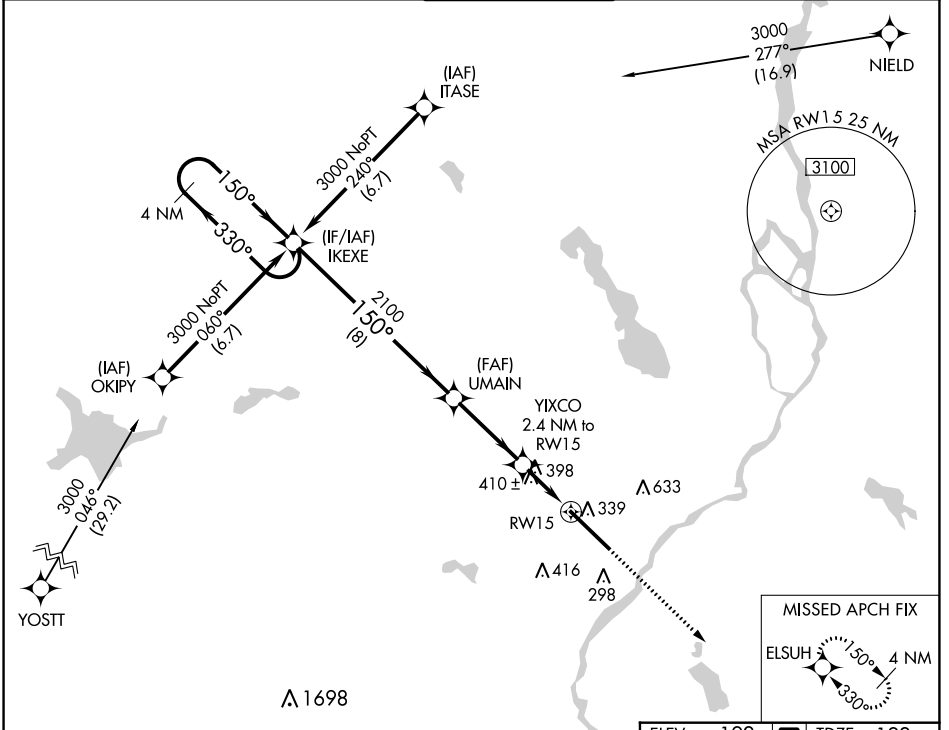
# RNAV (GPS) RWY 15

BANGOR INTL (BGR)

**ASR** For uncompensated Baro-VNAV systems, LNAV/VNAV NA below -19°C (-2°F) or above 54°C (130°F). DME/DME RNP-0.3 NA. For inoperative ALS, increase LPV Cat E visibility to RVR 4000, LNAV/VNAV all Cats visibility to RVR 6000, and LNAV Cats C/D/E visibility to 1½ SM. Circling NA NE of Rwy 15-33.

**ALSF-2** MISSED APPROACH: Climb to 3000 direct ELSUH and hold.

ATIS <b>127.75</b>	BANGOR APP CON <b>118.925 239.3</b>	BANGOR TOWER <b>120.7 233.7</b>	GND CON <b>121.9 348.6</b>	CLNC DEL <b>135.9 348.6</b>
-----------------------	--	------------------------------------	-------------------------------	--------------------------------



NE-1, 28 NOV 2024 to 26 DEC 2024

NE-1, 28 NOV 2024 to 26 DEC 2024

4 NM Holding Pattern		VGSI and RNAV glidepath not coincident (VGSI Angle 3.00/TCH 55).		3000	ELSUH
GP 3.00° TCH 50		* LNAV only.			
3000 ← 330°		150° →			
IKEXE		UMAIN		YIXCO	
2100		2100		2.4 NM to RW15	
150°		1.3 NM to RW15		RW15	
8 NM		3.4 NM		1.1	
1000*		1.3			
CATEGORY	A	B	C	D	E
LPV DA	392/24		200 (200-½)		
LNAV/VNAV DA	541/40		349 (400-¾)		
LNAV MDA	660/24 468 (500-½)		660/50 468 (500-1)		
CIRCLING	660-1 468 (500-1)	720-1 528 (600-1)	740-1½ 548 (600-1½)	820-2 628 (700-2)	880-2½ 688 (700-2½)

