

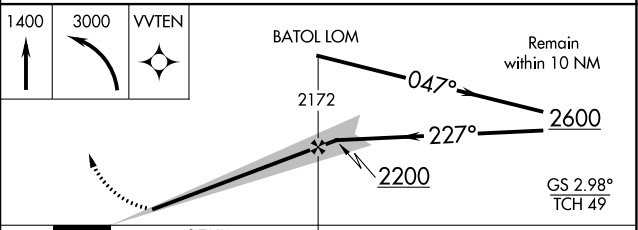
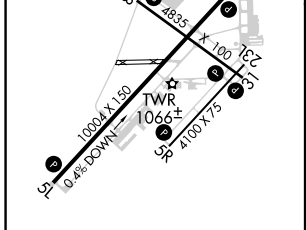
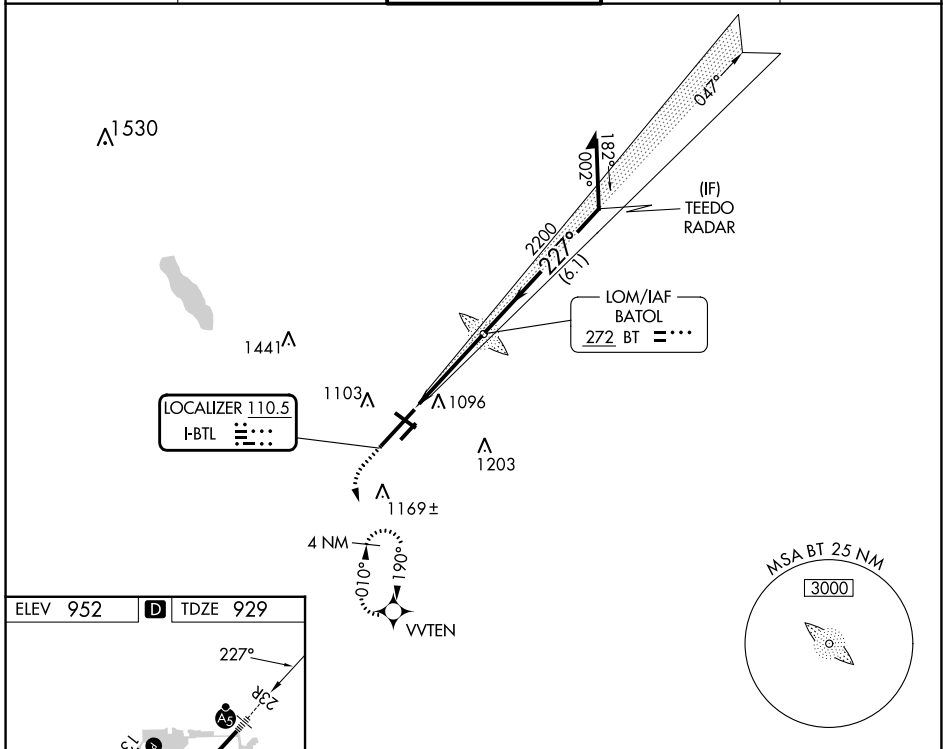
LOC I-BTL <b>110.5</b>	APP CRS <b>227°</b>	Rwy Idg <b>10004</b> TDZE <b>929</b> Apt Elev <b>952</b>
---------------------------	------------------------	--

# ILS or LOC RWY 23R

BATTLE CREEK EXEC AT KELLOGG FLD (BTL)

ADF required. RADAR required for procedure entry. RNP APCH - GPS.		MALSR	MISSED APPROACH: Climb to 1400 then climbing left turn to 3000 direct VVTEN and hold, continue climb-in-hold to 3000.
<p>⚠ Circling NA to Rwys 5R and 23L. Circling Rwy 31 NA at night. For inop ALS increase S-LOC 23R Cat C/D visibility to 1 3/8 SM. * RVR 1800 authorized with use of FD or AP or HUD to DA (NA when using Grand Rapids altimeter setting).</p>			

ATIS <b>128.325</b>	GREAT LAKES APP CON* <b>119.2 239.25</b>	BATTLE CREEK TOWER* <b>126.825</b> (CTAF)	GND CON <b>121.7</b>	UNICOM <b>122.95</b>
------------------------	---	--	-------------------------	-------------------------



ELEV 952	<b>D</b>	TDZE 929			
<p>HIRL Rwy 5L-23R MIRL Rwy 13-31 and 5R-23L REIL Rwys 5L, 5R, 13, 23L and 31</p> <p>FAF to MAP 3.7 NM</p>					
Knots	60	90	120	150	180
Min:Sec	3:42	2:28	1:51	1:29	1:14

CATEGORY	A	B	C	D
S-ILS 23R*	1129/24		200 (200-1/2)	
S-LOC 23R	1400/24	471 (500-1/2)	1400/50	471 (500-1)
<b>C</b> CIRCLING	1420-1 468 (500-1)	1480-1 528 (600-1)	1520-1 1/2 568 (600-1 1/2)	1520-2 568 (600-2)

EC-1, 28 NOV 2024 to 26 DEC 2024

EC-1, 28 NOV 2024 to 26 DEC 2024