

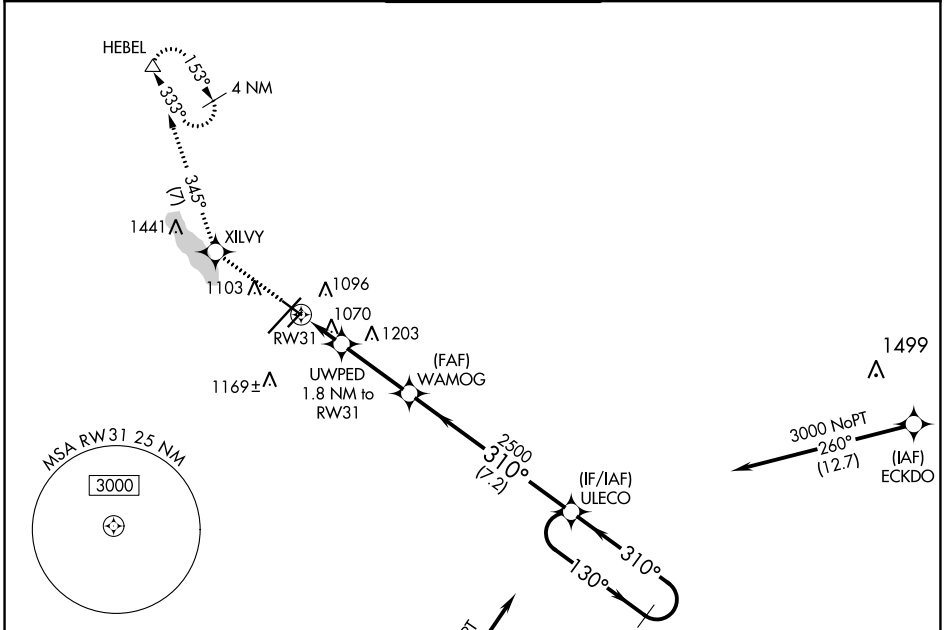
APP CRS	Rwy Idg	<b>4835</b>
<b>310°</b>	TDZE	<b>930</b>
	Apt Elev	<b>952</b>

# RNAV (GPS) RWY 31

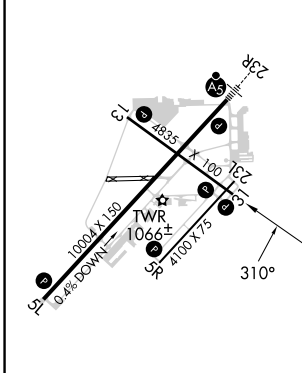
BATTLE CREEK EXEC AT KELLOGG FLD (BTL)

RNP APCH.	MISSED APPROACH: Climb to 3000 direct XILVY and on 345° track to HEBEL and hold.
<p>▼ Circling NA to Rwys 5R and 23L. Rwy 31 helicopter visibility reduction below 1 SM NA. Procedure NA at night.</p>	

ATIS <b>128.325</b>	GREAT LAKES APP CON★ <b>119.2 239.25</b>	BATTLE CREEK TOWER★ <b>126.825</b> (CTAF)	GND CON <b>121.7</b>	UNICOM <b>122.95</b>
------------------------	---	--	-------------------------	-------------------------



ELEV 952	<b>D</b> TDZE 930
----------	-------------------



3000	XILVY	tr 345°	HEBEL	4 NM Holding Pattern
UWPED 1.8 NM to RW31	WAMOG	3.00 TCH 40	ULECO	130° → 3000
RW31	1540	2500	310° ←	VGSI and descent angles not coincident (VGSI Angle 3.00/TCH 25).
1.8 NM	3 NM	7.2 NM		

CATEGORY	A	B	C	D
LNAV MDA	1320-1	390 (400-1)	1320-1½	390 (400-1½)
<b>C</b> CIRCLING	1420-1 468 (500-1)	1480-1 528 (600-1)	1520-1½ 568 (600-1½)	1520-2 568 (600-2)

HIRL Rwy 5L-23R  
MIRL Rwys 13-31 and 5R-23L  
REIL Rwys 5L, 5R, 13, 23L and 31

EC-1, 28 NOV 2024 to 26 DEC 2024

EC-1, 28 NOV 2024 to 26 DEC 2024