

WAAS CH <b>49141</b> <b>W13A</b>	APP CRS <b>128°</b>	Rwy Idg TDZE Apt Elev	<b>3668</b> <b>31</b> <b>32</b>
--	------------------------	-----------------------------	---------------------------------------

# RNAV (GPS) RWY 13

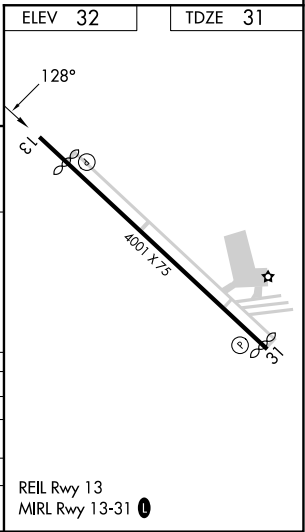
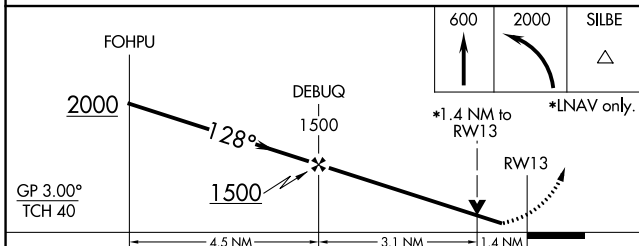
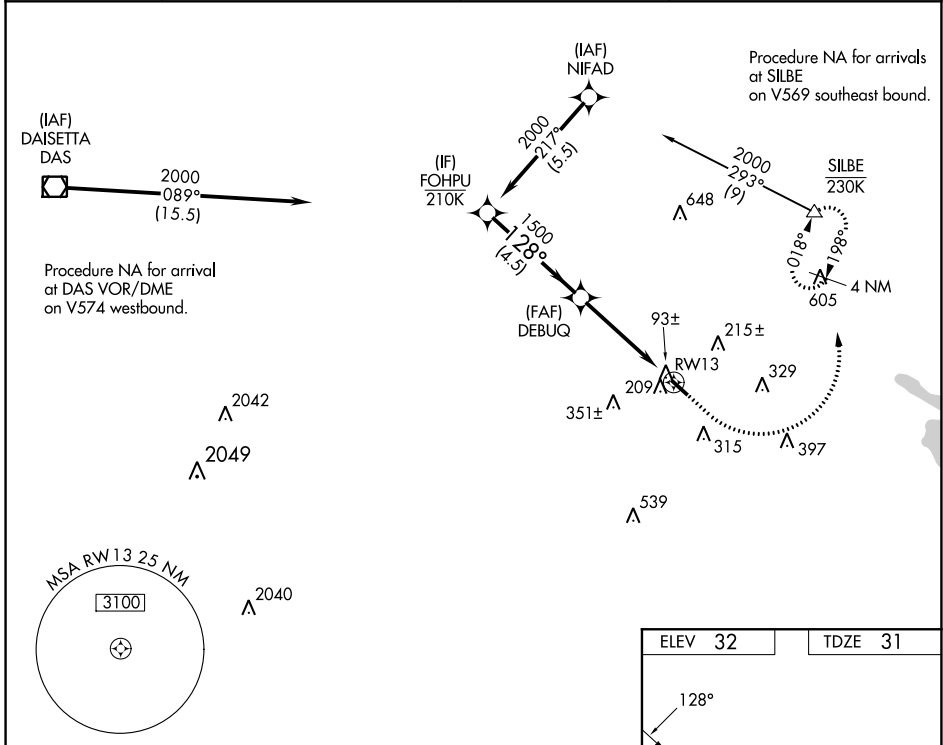
BEAUMONT MUNI (BMT)

RNP APCH GPS.

▼ For uncompensated Baro-VNAV systems, LNAV/VNAV NA below -15°C or above 54°C. Circling Rwy 31 NA at night. Rwy 13 helicopter visibility reduction below ¾ SM NA.

MISSED APPROACH: (Do not exceed 230K until SILBE) Climb to 600 then climbing left turn to 2000 direct SILBE and hold.

AWOS-3PT <b>118.425</b>	HOUSTON APP CON <b>121.3 377.1</b>	CLNC DEL <b>121.75</b>	UNICOM <b>123.0</b> (CTAF) <b>1</b>
----------------------------	---------------------------------------	---------------------------	--



CATEGORY	A	B	C	D
LPV DA		295-7/8	264 (300-7/8)	
LNAV/VNAV DA		433-1 1/8	402 (500-1 1/8)	
LNAV MDA	520-1	489 (500-1)	520-1 3/8	489 (500-1 3/8)
CIRCLING	580-1	620-1	720-2	720-2 1/4
	548 (600-1)	588 (600-1)	688 (700-2)	688 (700-2 1/4)

SC-5, 28 NOV 2024 to 26 DEC 2024

SC-5, 28 NOV 2024 to 26 DEC 2024