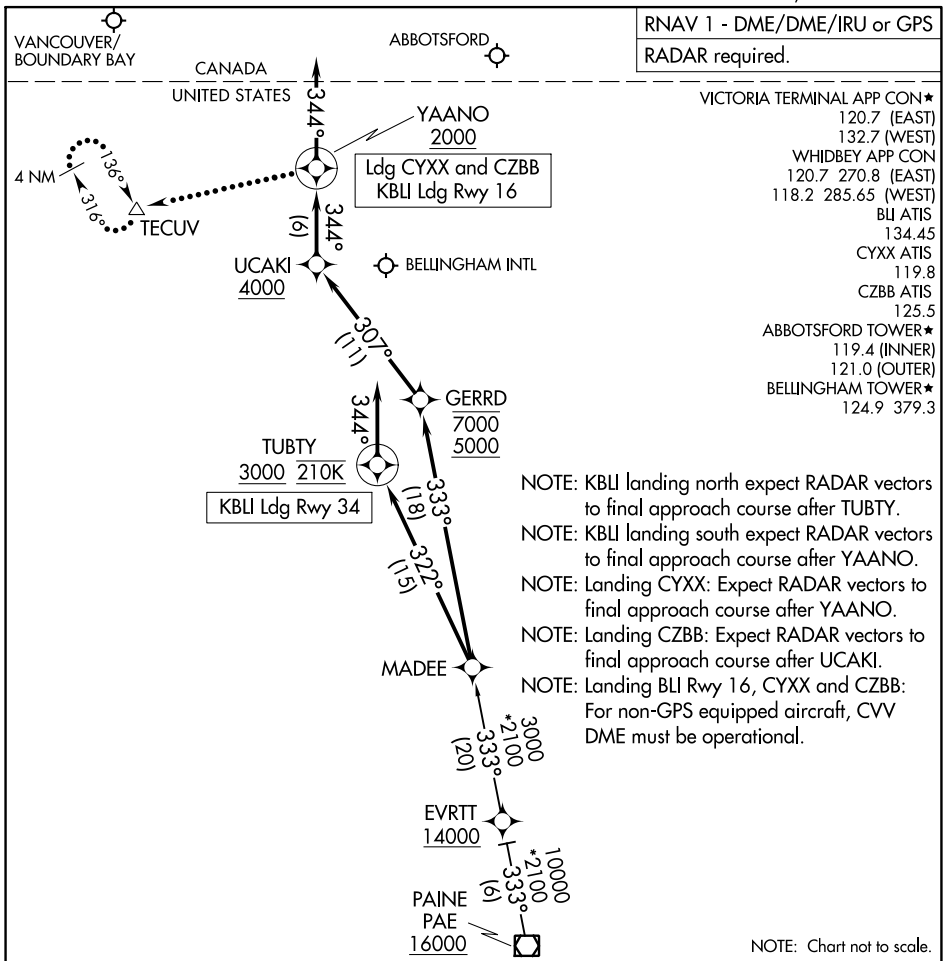


(MADEE.MADEE5) 23278

MADEE FIVE ARRIVAL (RNAV)

AL-45 (FAA)

BELLINGHAM, WASHINGTON



RNAV 1 - DME/DME/IRU or GPS
RADAR required.

VICTORIA TERMINAL APP CON★
 120.7 (EAST)
 132.7 (WEST)
 WHIDBEY APP CON
 120.7 270.8 (EAST)
 118.2 285.65 (WEST)
 BLI ATIS
 134.45
 CYXX ATIS
 119.8
 CZBB ATIS
 125.5
 ABBOTSFORD TOWER★
 119.4 (INNER)
 121.0 (OUTER)
 BELLINGHAM TOWER★
 124.9 379.3

NOTE: KBLI landing north expect RADAR vectors to final approach course after TUBTY.
 NOTE: KBLI landing south expect RADAR vectors to final approach course after YAANO.
 NOTE: Landing CYXX: Expect RADAR vectors to final approach course after YAANO.
 NOTE: Landing CZBB: Expect RADAR vectors to final approach course after UCAKI.
 NOTE: Landing BLI Rwy 16, CYXX and CZBB: For non-GPS equipped aircraft, CVV DME must be operational.

NOTE: Chart not to scale.

ARRIVAL ROUTE DESCRIPTION

PAINE TRANSITION (PAE.MADEE5)

LANDING BLI RUNWAY 16: From MADEE on track 333° to cross GERRD between 5000 and 7000, then on track 307° to cross UCAKI at or above 4000, then on track 344° to cross YAANO at or above 2000, then on track 344°. Expect RADAR vectors to final approach course.

LANDING BLI RUNWAY 34: From MADEE on track 322° to cross TUBTY at or above 3000 and at 210K, then on track 344°. Expect RNAV (RNP/GPS) RWY 34 approach or RADAR vectors to final approach course.

LANDING CZBB/CYXX: From MADEE on track 333° to cross GERRD between 5000 and 7000, then on track 307° to cross UCAKI at or above 4000, then on track 344° to cross YAANO at or above 2000, then on track 344°. Expect RADAR vectors to final approach course.

LOST COMMUNICATIONS

LANDING BLI RUNWAY 16: After UCAKI conduct RNAV (RNP) Z RWY 16 approach; if unable, proceed to YAANO maintain 2000 and proceed to TECUV and hold.

LANDING CYXX and CZBB: After YAANO maintain 2000 and proceed to TECUV and hold.

MADEE FIVE ARRIVAL (RNAV)

BELLINGHAM, WASHINGTON

(MADEE.MADEE5) 05OCT23

NW-1, 28 NOV 2024 to 26 DEC 2024

NW-1, 28 NOV 2024 to 26 DEC 2024