

APP CRS	Rwy Idg	<b>6700</b>
<b>344°</b>	TDZE	<b>171</b>
	Apt Elev	<b>171</b>

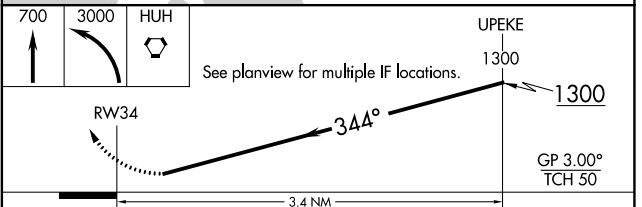
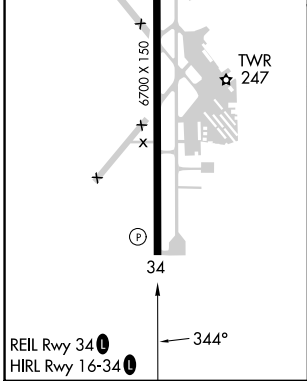
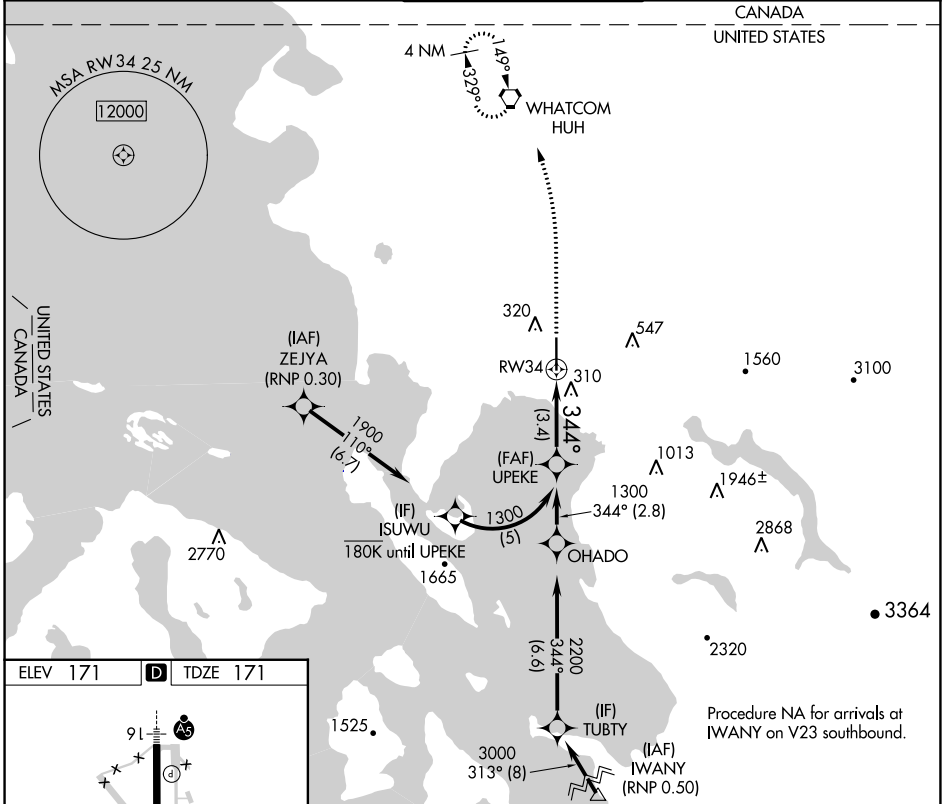
# RNAV (RNP) Z RWY 34

BELLINGHAM INTL (BLI)

RNP AR APCH-GPS. MISSED APPROACH: Climb to 700 then climbing left turn to 3000 direct WHATCOM VORTAC and hold, continue climb-in-hold to 3000.

For uncompensated Baro-VNAV systems, procedure NA below -7°C or above 54°C.

ATIS	VICTORIA TERMINAL APP CON	BELLINGHAM TOWER ★	GND CON	UNICOM
<b>134.45</b>	<b>132.7 290.8</b>	<b>124.9 (CTAF) 0 379.3</b>	<b>127.4 379.3</b>	<b>122.95</b>



CATEGORY	A	B	C	D
RNP 0.11 DA		463-7/8	292 (300-7/8)	
RNP 0.30 DA		578-1 3/8	407 (500-1 3/8)	

**AUTHORIZATION REQUIRED**

NW-1, 28 NOV 2024 to 26 DEC 2024

NW-1, 28 NOV 2024 to 26 DEC 2024