

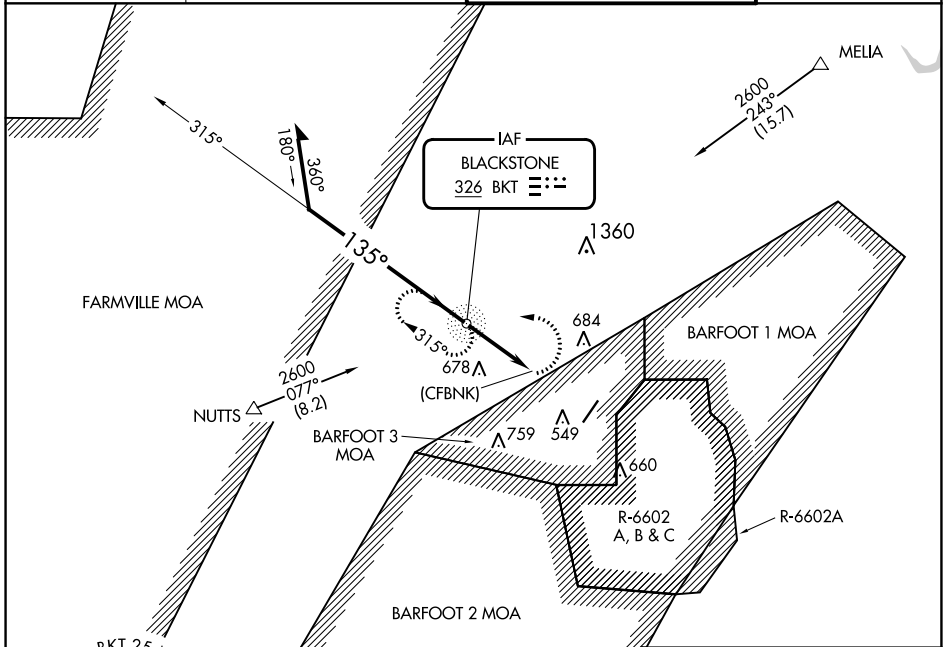
NDB-A

ALLAN C PERKINSON/BLACKSTONE AAF (BKT)

NDB BKT 326	APP CRS 135°	Rwy Idg TDZE Apt Elev	N/A N/A 437
-----------------------	------------------------	-----------------------------	--

⚠ Circling NA east of Rwy 4-22. MISSED APPROACH: Climbing left turn to 2600 direct BKT NDB and hold, continue climb-in-hold to 2600.

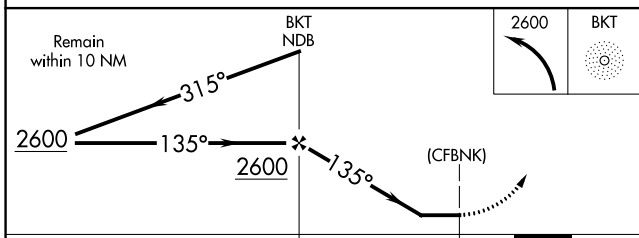
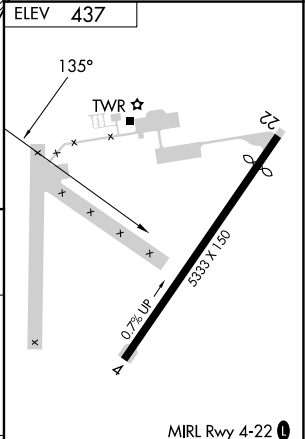
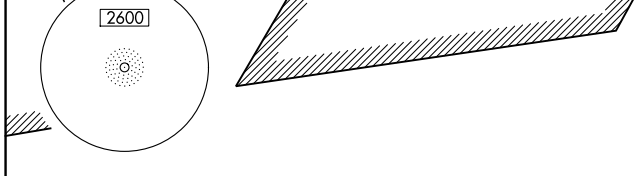
ATIS 119.225	WASHINGTON CENTER 118.75 377.1	BLACKSTONE TOWER★ 134.7 (CTAF) 292.7	GND CON 127.625
------------------------	--	--	---------------------------



NE-3, 28 NOV 2024 to 26 DEC 2024

NE-3, 28 NOV 2024 to 26 DEC 2024

ELEV 437



CATEGORY	A			B		C		D		FAF to MAP 2.9 NM					
	980-3	543	(600-3)	1000-3	563	(600-3)	NA	Knots	60	90	120	150	180		
C CIRCLING										Min:Sec	2:54	1:56	1:27	1:10	0:58

NDB-A