

WAAS CH 56419 W35A	APP CRS 353°	Rwy Idg TDZE Apt Elev	6099 1238 1258
--	------------------------	-----------------------------	---

RNAV (GPS) RWY 35

FREDERICK RGNL (F'DR)

RNP APCH-GPS.

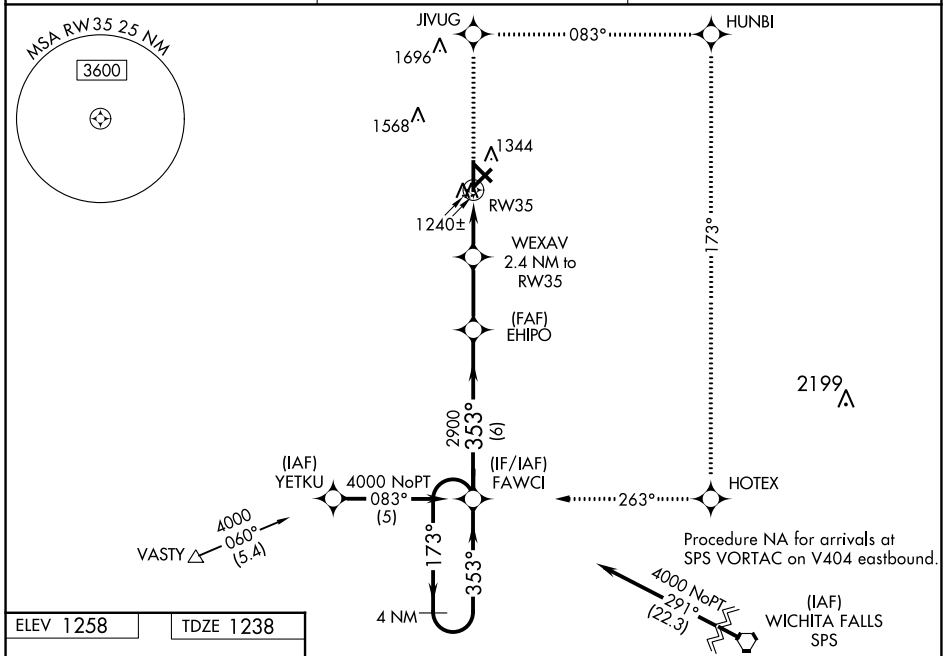
▼ For uncompensated Baro-VNAV systems, LNAV/VNAV NA below -17°C or above 46°C.
 ▲ Baro-VNAV and VDP NA when using Vernon altimeter setting. When local altimeter setting not received, use Vernon altimeter setting: increase LPV DA to 1478 feet; increase LNAV/VNAV DA to 1540 feet; increase all MDAs 40 feet and visibility LNAV Cat C ¼ SM and Circling Cat D ½ SM. Circling Rwy 3, 12,17, 21, 30, NA at night.

MISSED APPROACH: Climb to 4000 direct JIVUG and right turn on track 083° to HUNBI and right turn on track 173° to HOTEK and right turn on track 263° to FAWCI and hold.

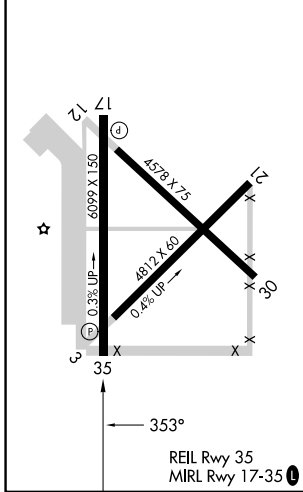
ASOS
132.675

ALTUS APP CON ★
125.1 353.7

UNICOM
123.05 (CTAF) 0



ELEV 1258	TDZE 1238
-----------	-----------



4000	JIVUG	HUNBI	HOTEK	FAWCI
↑	tr 083°	tr 173°	tr 263°	
4 NM Holding Pattern				
WEXAV 2.4 NM to RW35		EHIPO 2900	FAWCI 173° → 4000	
RW35 1 NM to RW35		2040	← 353°	
1 NM		1.4 NM	2.6 NM	
		6 NM		GP 3.00° TCH 40
CATEGORY	A	B	C	D
LPV DA	1438-¾		200 (200-¾)	
LNAV/VNAV DA	1500-1		262 (300-1)	
LNAV MDA	1600-1		362 (400-1)	
CIRCLING	1700-1	1720-1	1880-1¾	1900-2
	442 (500-1)	462 (500-1)	622 (700-1¾)	642 (700-2)

SC-1, 28 NOV 2024 to 26 DEC 2024

SC-1, 28 NOV 2024 to 26 DEC 2024