

LOC/DME I-LIP	APP CRS	Rwy Idg	10083
110.7	330°	TDZE	16
Chan 44		Apt Elev	19

ILS RWY 33L (CAT II & III)

GENERAL EDWARD LAWRENCE LOGAN INTL (BOS)

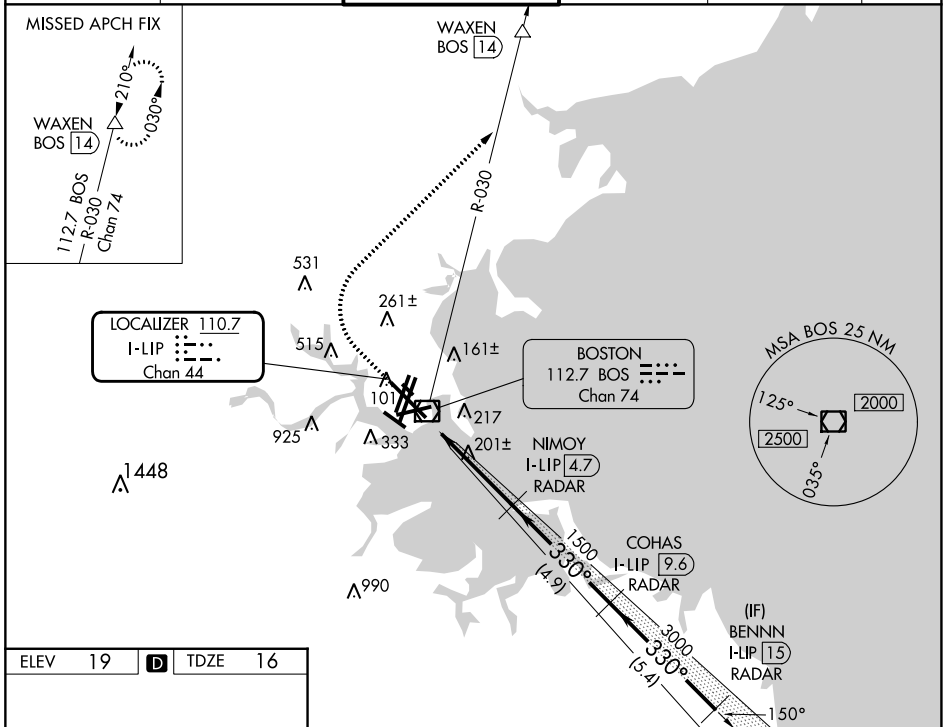
RADAR required for procedure entry. DME required.

ALSF-2

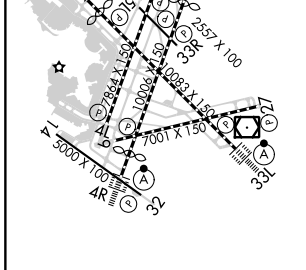
▼ CAT II: RVR 1000 authorized with specific OPSPEC, MSPEC, or LOA approval and use of autoland or HUD to touchdown.

MISSED APPROACH: Climb to 1500 then climbing right turn to 3000 on BOS VOR/DME R-030 to WAXEN/BOS 14 DME and hold.

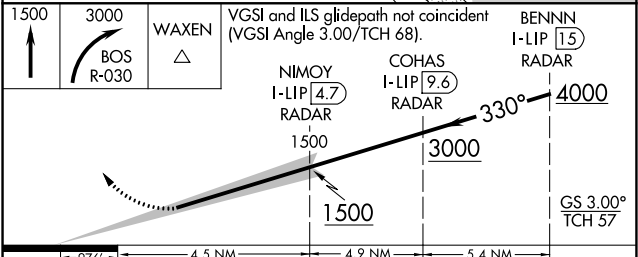
D-ATIS	BOSTON APP CON	BOSTON TOWER	GND CON	CLNC DEL	CPDLC
135.0	120.6 263.1	128.8 257.8 (WEST) 132.225 257.8 (EAST)	121.75 121.9	121.65 257.8	



ELEV	19	D	TDZE	16
------	-----------	----------	------	-----------



TDZ/CL Rwy's 4R, 15R and 33L
 REIL Rwy's 4L, 27 and 32
 MIRL Rwy 15L-33R
 HIRL Rwy's 4L-22R, 4R-22L,
 9-27, 14-32 and 15R-33L



CATEGORY	A	B	C	D
S-ILS 33L	CAT II RA 116/12 100 DA 116			
S-ILS 33L	CAT III RVR 06			

CATEGORY II & III ILS - SPECIAL AIRCREW & AIRCRAFT CERTIFICATION REQUIRED

NE-1, 28 NOV 2024 to 26 DEC 2024

NE-1, 28 NOV 2024 to 26 DEC 2024