

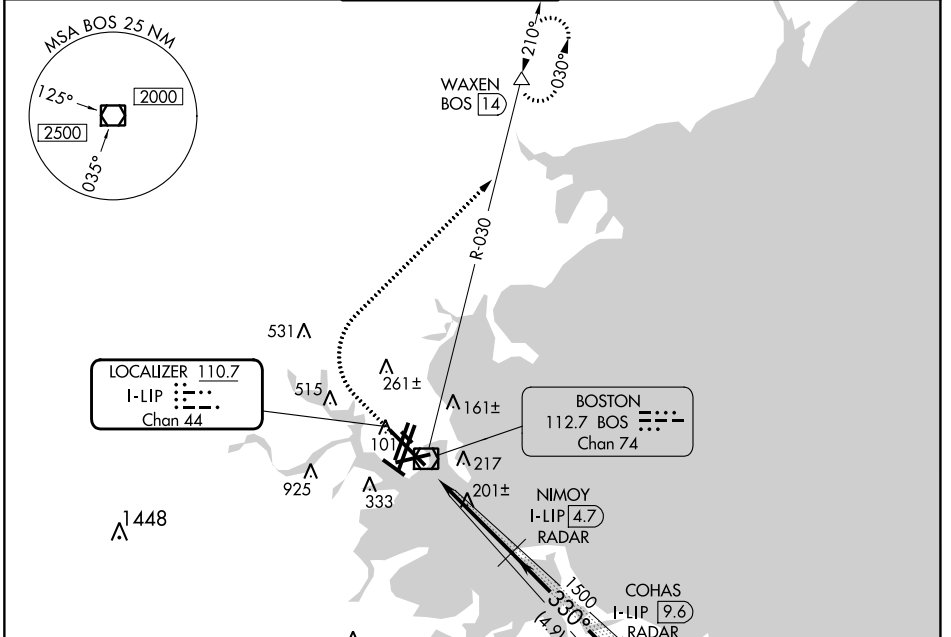
LOC/DME I-LIP <b>110.7</b> Chan <b>44</b>	APP CRS <b>330°</b>	Rwy Idg <b>10083</b> TDZE <b>16</b> Apt Elev <b>19</b>
---	------------------------	--

# ILS RWY 33L (SA CAT I)

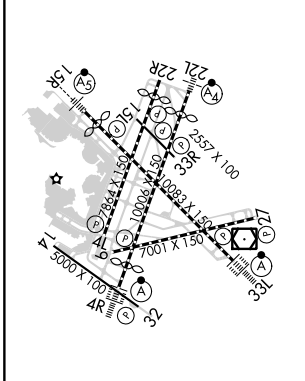
GENERAL EDWARD LAWRENCE LOGAN INTL (BOS)

RADAR required for procedure entry. DME required.		ALSF-2	MISSED APPROACH: Climb to 1500 then climbing right turn to 3000 on BOS VOR/DME R-030 to WAXEN/BOS 14 DME and hold.	
Requires specific OPSPEC, MSPEC, or LOA approval.				

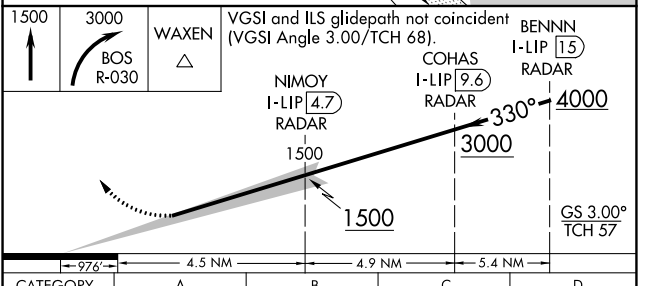
D-ATIS <b>135.0</b>	BOSTON APP CON <b>120.6 263.1</b>	BOSTON TOWER <b>128.8 257.8 (WEST)</b> <b>132.225 257.8 (EAST)</b>	GND CON <b>121.75 121.9</b>	CLNC DEL <b>121.65 257.8</b>	CPDLC
------------------------	--------------------------------------	--	--------------------------------	---------------------------------	-------



ELEV <b>19</b>	<b>D</b>	TDZE <b>16</b>
----------------	----------	----------------



TDZ/CL Rwy 4R, 15R and 33L  
 REIL Rwy 4L, 27 and 32  
 MIRL Rwy 15L-33R  
 HIRL Rwy 4L-22R, 4R-22L,  
 9-27, 14-32 and 15R-33L



CATEGORY	A	B	C	D
S-ILS 33L	RA 166/14 150 DA 166			

**SA CATEGORY I ILS - SPECIAL AIRCREW & AIRCRAFT CERTIFICATION REQUIRED**

NE-1, 28 NOV 2024 to 26 DEC 2024

NE-1, 28 NOV 2024 to 26 DEC 2024