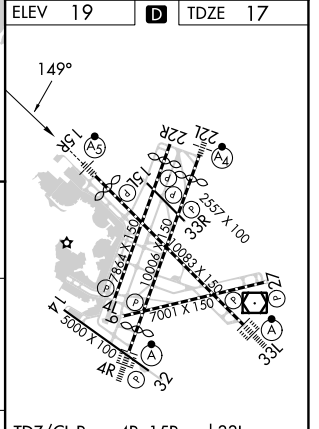
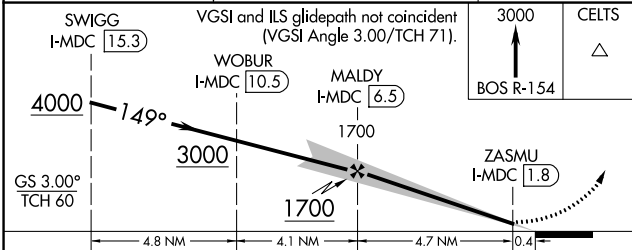
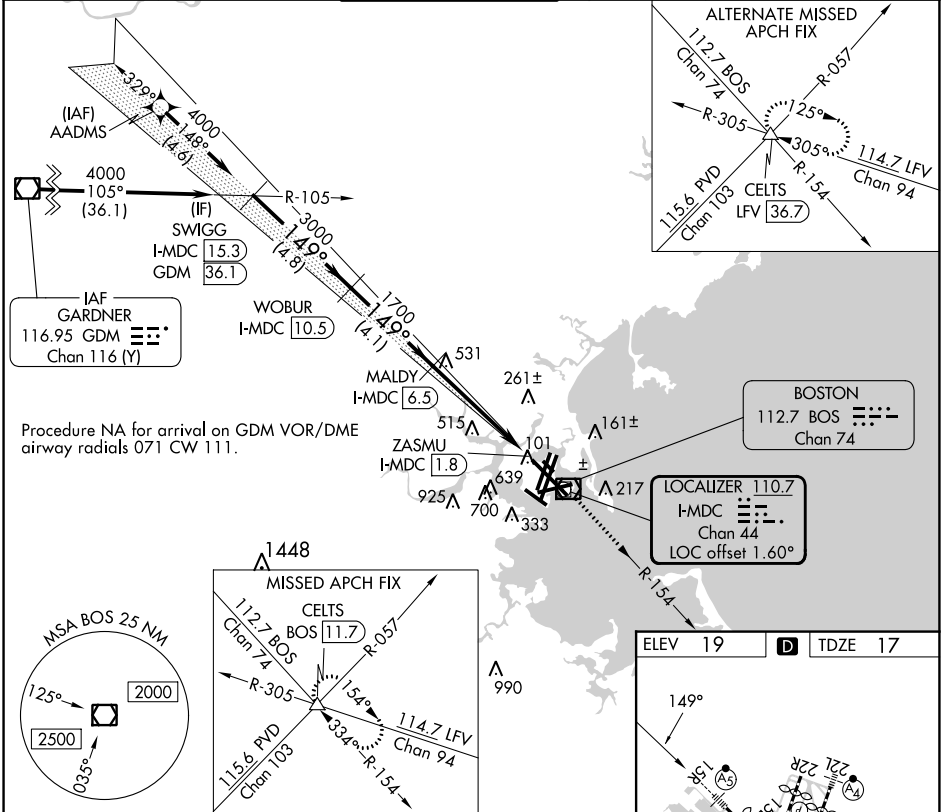


LOC/DME I-MDC	APP CRS	Rwy Idg	<b>9201</b>
<b>110.7</b>	<b>149°</b>	TDZE	<b>17</b>
Chan <b>44</b>		Apt Elev	<b>19</b>

# ILS or LOC RWY 15R

GENERAL EDWARD LAWRENCE LOGAN INTL (BOS)

RNP APCH - GPS. From AADMS.		MALSR 	MISSED APPROACH: Climb to 3000 on BOS VOR/DME R-154 to CELTS INT/BOS 110.7 DME and hold.		
DME required. ▼ For inop ALS, increase S-LOC 15R Cats C/D visibility to 1½ SM.					
D-ATIS <b>135.0</b>	BOSTON APP CON <b>120.6 263.1</b>	<b>BOSTON TOWER</b> <b>128.8 257.8 (WEST)</b> <b>132.225 257.8 (EAST)</b>	GND CON <b>121.75 121.9</b>	CLNC DEL <b>121.65 257.8</b>	CPDLC



CATEGORY	A	B	C	D
S-ILS 15R	267/24 250 (300-½)			
S-LOC 15R	580/24	563 (600-½)	580-1¼	563 (600-1¼)

TDZ/CL Rwsy 4R, 15R and 33L  
REIL Rwsy 4L, 27 and 32  
MIRL Rwy 15L-33R  
HIRL Rwsy 4L-22R, 4R-22L, 9-27, 14-32 and 15R-33L

NE-1, 28 NOV 2024 to 26 DEC 2024

NE-1, 28 NOV 2024 to 26 DEC 2024