

LOC/DME I-DGU <b>111.3</b> Chan <b>50</b>	APP CRS <b>272°</b>	Rwy ldg <b>7001</b> TDZE <b>17</b> Apt Elev <b>19</b>
---	------------------------	---

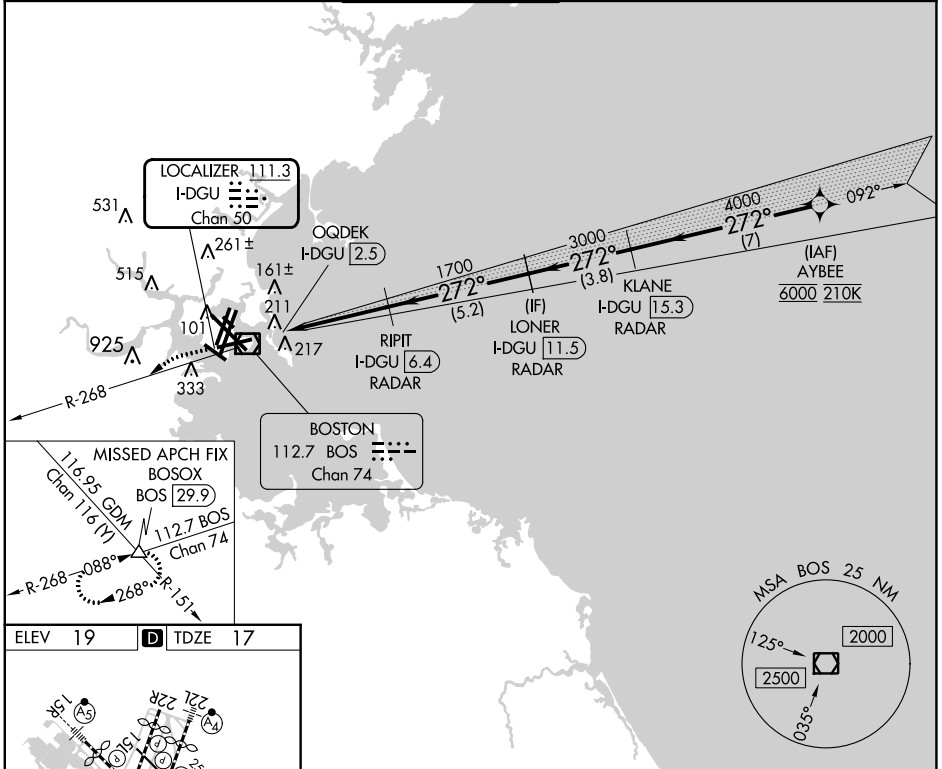
# ILS or LOC RWY 27

GENERAL EDWARD LAWRENCE LOGAN INTL (BOS)

RNP APCH - GPS. From AYBEE.  
 RADAR required for procedure entry. DME or RADAR required.  
 ▼

MISSED APPROACH: Climb to 3000  
 on BOS VOR/DME R-268 to  
 BOSOX INT/BOS 29.9 DME and hold.

D-ATIS <b>135.0</b>	BOSTON APP CON <b>120.6 263.1</b>	BOSTON TOWER <b>128.8 257.8 (WEST)</b> <b>132.225 257.8 (EAST)</b>	GND CON <b>121.75 121.9</b>	CLNC DEL <b>121.65 257.8</b>	CPDLC
------------------------	--------------------------------------	--	--------------------------------	---------------------------------	-------



ELEV 19	<b>D</b>	TDZE 17												
<p>TDZ/CL Rwy 4R, 15R and 33L          REIL Rwy 4L, 27 and 32          MRL Rwy 15L-33R          HIRL Rwy 4L-22R, 4R-22L,          9-27, 14-32 and 15R-33L</p> <p>FAF to MAP 3.9 NM</p> <table border="1"> <tr> <td>Knots</td> <td>60</td> <td>90</td> <td>120</td> <td>150</td> <td>180</td> </tr> <tr> <td>Min:Sec</td> <td>3:48</td> <td>2:32</td> <td>1:54</td> <td>1:31</td> <td>1:16</td> </tr> </table>			Knots	60	90	120	150	180	Min:Sec	3:48	2:32	1:54	1:31	1:16
Knots	60	90	120	150	180									
Min:Sec	3:48	2:32	1:54	1:31	1:16									

3000	BOSOX	VGSI and ILS glidepath not coincident (VGSI Angle 3.00/TCH 71).		AYBEE
BOS R-268	△	RIPIT I-DGU [6.4] RADAR	LONER I-DGU [11.5] RADAR	KLANE I-DGU [15.3] RADAR
1700	OQDEK I-DGU [2.5]	1700	3000	4000
1.2	3.9 NM	5.2 NM	3.8 NM	7 NM
CATEGORY	A	B	C	D
S-ILS 27	460-1½ 443 (500-1½)			
S-LOC 27	460-1½ 443 (500-1½)			
				6000
				GS 3.00° TCH 57

NE-1, 28 NOV 2024 to 26 DEC 2024

NE-1, 28 NOV 2024 to 26 DEC 2024