

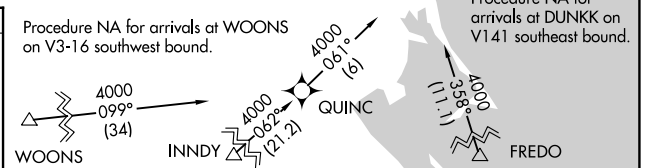
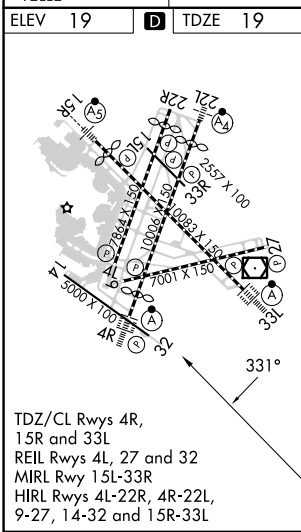
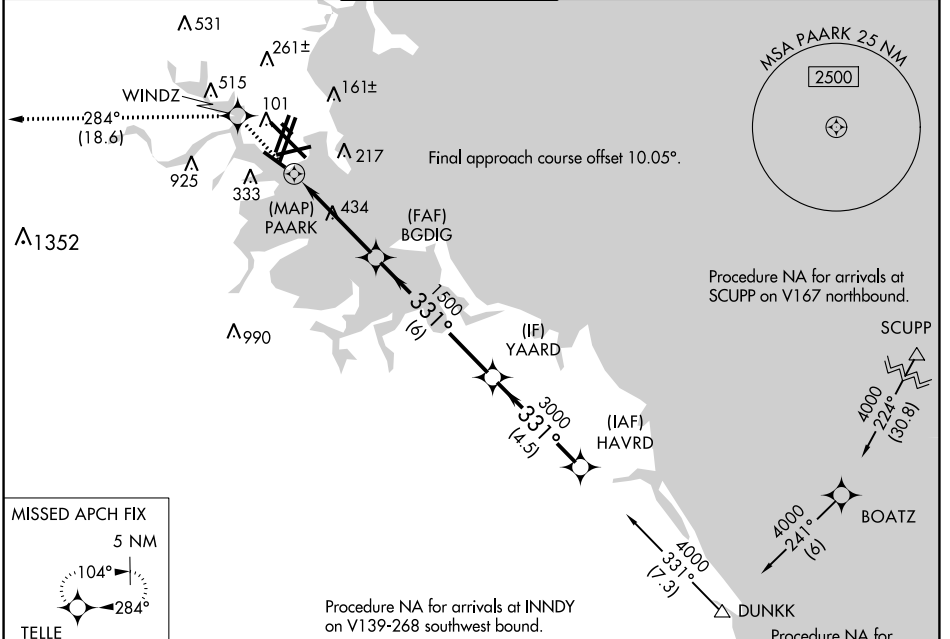
APP CRS	Rwy Idg	5000
331°	TDZE	19
	Apt Elev	19

RNAV (GPS) RWY 32

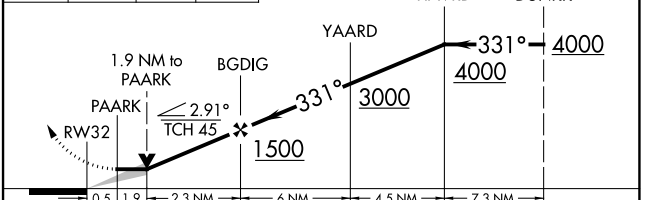
GENERAL EDWARD LAWRENCE LOGAN INTL (BOS)

RNP APCH - GPS.		MISSED APPROACH: Climb to 3000 direct WINDZ and on track 284° to TELLE and hold.			
-----------------	--	----------------------------------------------------------------------------------	--	--	--

D-ATIS	BOSTON APP CON	BOSTON TOWER	GND CON	CLNC DEL	CPDLC
135.0	120.6 263.1	128.8 257.8 (WEST) 132.225 257.8 (EAST)	121.75 121.9	121.65 257.8	



3000	WINDZ	TELLE
↑	✧	✧
	tr 284°	



CATEGORY	A	B	C	D
LNAV MDA	820-1 801 (900-1)	820-1¼ 801 (900-1¼)	820-2½	801 (900-2½)

NE-1, 28 NOV 2024 to 26 DEC 2024

NE-1, 28 NOV 2024 to 26 DEC 2024