

REVSS SIX DEPARTURE (RNAV)

AL-58 (FAA)

BOSTON, MASSACHUSETTS

NE-1, 28 NOV 2024 to 26 DEC 2024

RNAV 1 - DME/DME/IRU or GPS.  
RADAR required for non-GPS equipped aircraft.

BOSTON DEP CON  
133.0  
D-ATIS 135.0  
CLNC DEL  
121.65 257.8  
CPDIC  
GND CON  
121.75 121.9  
BOSTON TOWER  
128.8 257.8 (WEST)  
132.225 257.8 (EAST)

TAKEOFF MINIMUMS

Rwy 4L, 14, 15L, 32, 33R: NA - ATC.

Rwy 4R, 9, 15R, 22R, 33L: Standard with minimum climb of 500'/NM to 520.

Rwy 22L: 300-1 with minimum climb of 500'/NM to 520, or standard with

minimum climb of 500'/NM to 520 if tower reports no tall vessels in

the departure area.

Rwy 27: Standard with minimum climb of 500' per NM to 1300.

HURBE  
4000

CLAWW  
4000 250K

BRRRO  
3000 250K

TEKKK

DUBYU

GLOWB  
3000 250K

KIRAA

TIAYY  
1200 210K

TASKT  
09A

CHWDH

STEEM

WYMYH

HEWMO  
5000 260K

KENWI

DEDHM

JAIITE

GILLET

FENWY

ORRRR

NHANIT

CHWDDH

WYMYH

HEWMO

KENWI

DEDHM

JAIITE

GILLET

FENWY

ORRRR

NHANIT

CHWDDH

WYMYH

HEWMO

KENWI

DEDHM

JAIITE

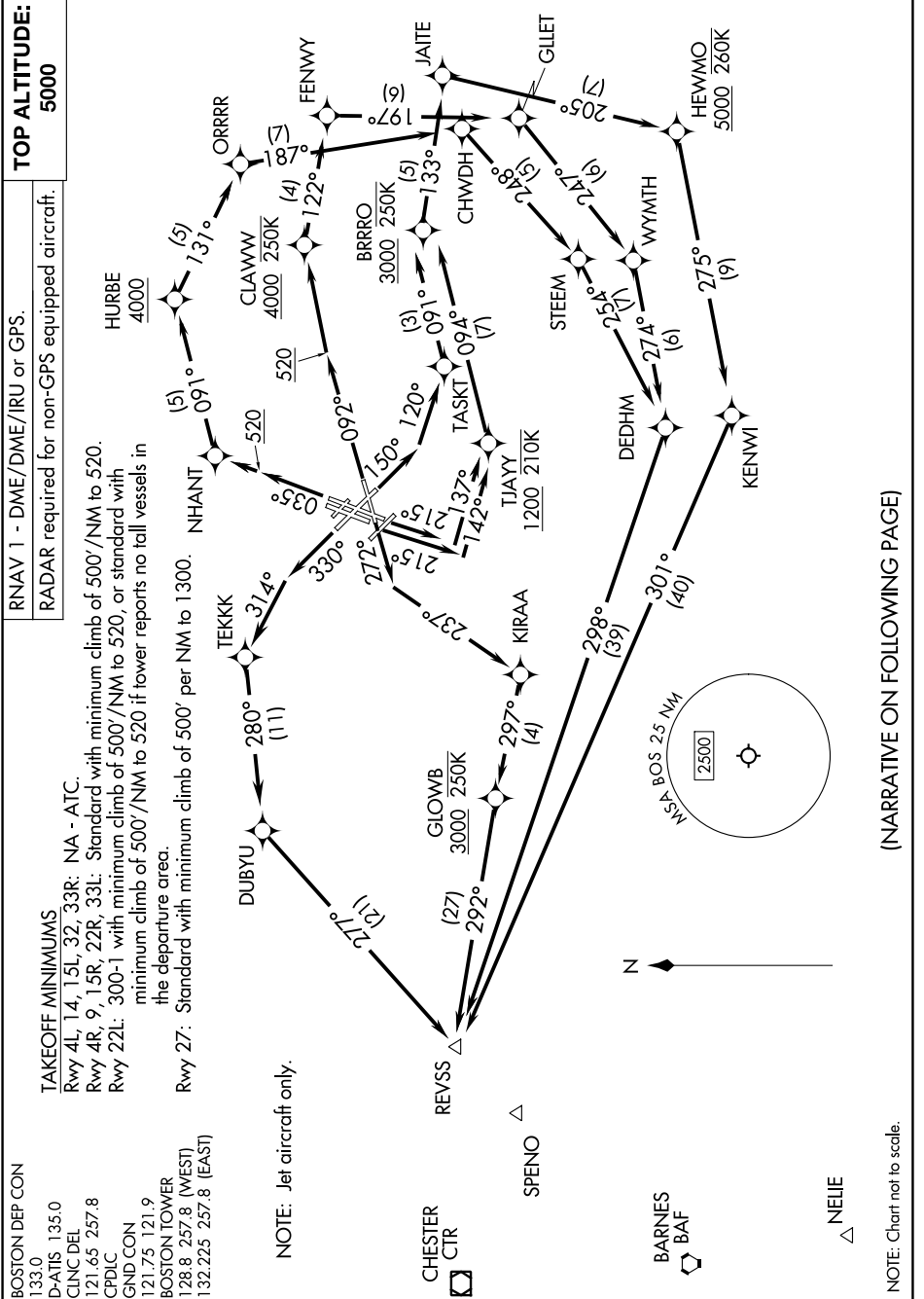
GILLET

FENWY

ORRRR

NOTE: Jet aircraft only.

REVSS SIX DEPARTURE (RNAV)



(NARRATIVE ON FOLLOWING PAGE)

NE-1, 28 NOV 2024 to 26 DEC 2024

NOTE: Chart not to scale.