

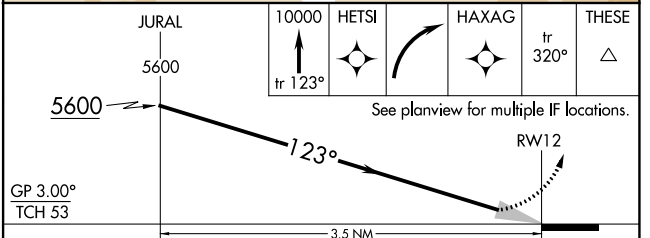
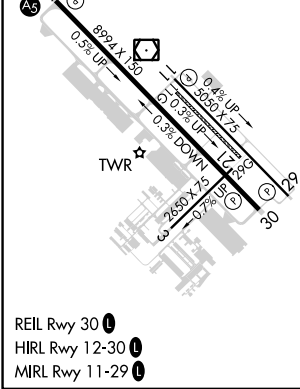
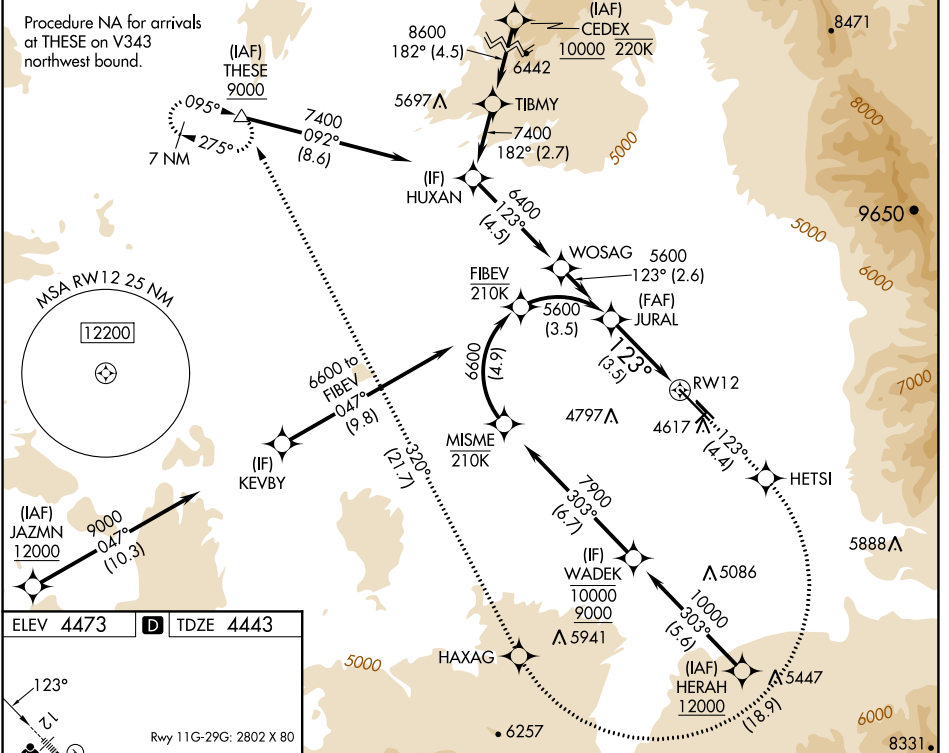
APP CRS	Rwy Idg	8994
123°	TDZE	4443
	Apt Elev	4473

RNAV (RNP) Z RWY 12

BOZEMAN YELLOWSTONE INTL (BZN)

RNP AR APCH - GPS.		MALSR	MISSED APPROACH: Climb to 10000 on track 123° to HETSI, and right turn to HAXAG, and on track 320° to THESE and hold.
<p>▼ For uncompensated Baro-VNAV systems, procedure NA below -29°C or above 54°C. When local altimeter setting not received, procedure NA. For inop ALS, increase RNP 0.10 visibility to 7/8 SM and RNP 0.30 visibility to 1 SM.</p>			

ATIS 135.425	BIG SKY APP CON★ 118.975 226.675	BOZEMAN TOWER★ 118.2 (CTAF) 0	GND CON 121.8	UNICOM 122.95
------------------------	--	---	-------------------------	-------------------------



CATEGORY	A	B	C	D
RNP 0.10 DA		4723-1/2	280 (300-1/2)	
RNP 0.30 DA		4795-5/8	352 (400-5/8)	

AUTHORIZATION REQUIRED

NW-1, 28 NOV 2024 to 26 DEC 2024

NW-1, 28 NOV 2024 to 26 DEC 2024